

**Camry** 2012





*SE*

shown in Attitude Black Metallic with available power tilt/slide moonroof and Leather Package.



*XLE*

shown in Classic Silver  
Metallic.



**HYBRID  
XLE**

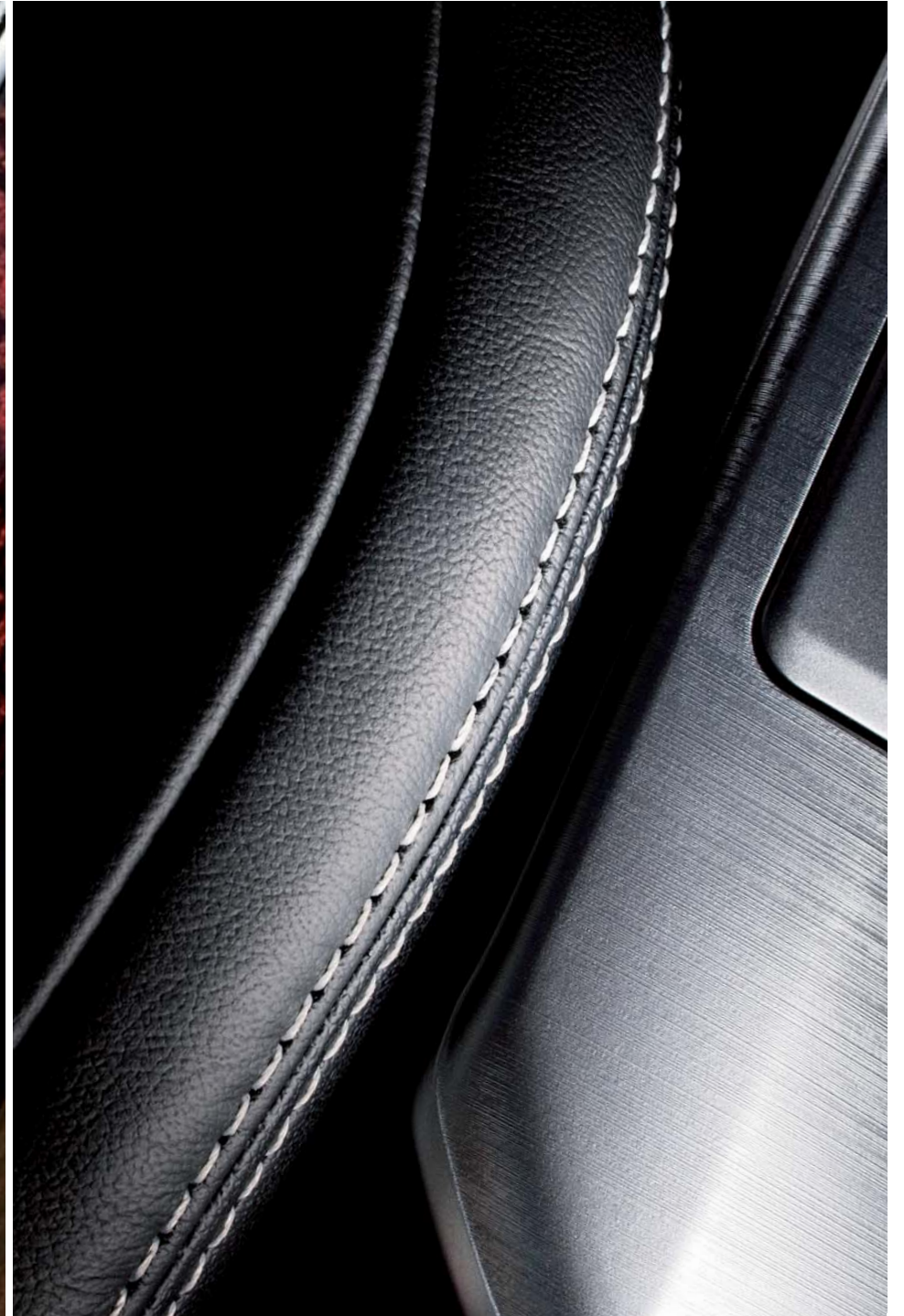
shown in Clearwater  
Blue Metallic.

---

With each day bringing new advancements to the way we live and work, shouldn't your car be advanced too? Meet the reinvented 2012 Toyota Camry, the car designed to fit you and your 21st century lifestyle. You're no doubt familiar with Camry; it's America's best-selling car.<sup>1</sup> And over the past 25 years, it's become the standard for quality. In fact, 90% of all Camrys sold in the last 15 years are still on the road.<sup>2</sup> With such remarkable acclaim, you might expect us to rest on our laurels. We didn't. Camry is more luxurious, with a redesigned interior. It's now available with new multimedia systems. And the Camry Hybrid LE now offers an estimated 43 city mpg.<sup>3</sup> Quite simply, the 2012 Camry is what you've come to expect from this legendary sedan. The reinvented Camry is ready. Are you? **2012 Toyota Camry. Moving Forward.**

“*Being the number one vehicle maker in the world is an awesome title. But, being the number one quality vehicle is even better.*”

Greg Newby  
Group Leader Body Weld 3  
Toyota Motor Manufacturing, Kentucky, Inc.





SE

V6 shown in Black Sport fabric with Display Audio with Navigation<sup>1</sup> and Entune.<sup>TM2</sup>

1. See footnote 9 in Disclaimers section. 2. See footnote 10 in Disclaimers section.



## XLE

V6 shown in Ivory leather trim with available Premium HDD Navigation<sup>1</sup> with Entune™<sup>2</sup> and JBL®

---

In creating the reinvented 2012 Toyota Camry, we pored over every facet of the previous model's interior in search of even the subtlest ways to enhance what was already a remarkable driving experience. We incorporated high-quality upholstery materials and married the elements with refined stitching. We crafted the dashboard with an artistry normally found in high-priced sedans. On the XLE, we adorned key touch points throughout the cabin with rich wood-grain-style accents. This unwavering search for ways to improve on a car of such legendary quality may seem like overkill to some, but it's precisely this approach that has made Camry America's best-selling car<sup>1</sup>



XLE interior shown with available Premium HDD Navigation<sup>1</sup> with Entune™<sup>2</sup> and JBL®.



1. See footnote 9 in Disclaimers section. 2. See footnote 10 in Disclaimers section.

# We're driving the automobile to new places.

Available with a wide array of innovative technologies, the 2012 Camry is taking transportation in a bold direction. In addition to available navigation, its multimedia systems offer such highlights as standard *Bluetooth*<sup>®1</sup> hands-free phone capability, available advanced voice-recognition and Entune<sup>™2</sup>, a new feature integrated with select Toyota models that allows drivers to access popular mobile phone apps and data services. With all this, you won't just drive Camry, you'll connect with it.

## Premium HDD Navigation<sup>3</sup>

Boasting a sharp 7-in. high-resolution VGA touch-screen display, this available multimedia system offers advanced features like hard-drive navigation with SiriusXM Satellite Radio<sup>4</sup> capability, NavTraffic<sup>™4</sup> NavWeather<sup>™</sup> *Bluetooth*<sup>®</sup> wireless technology, advanced voice recognition, split-screen functionality, embedded points of interest, CD, DVD and MP3/WMA capability, an auxiliary audio jack, a USB<sup>5</sup> port, JBL<sup>®</sup> GreenEdge<sup>™</sup> audio system and Toyota's new mobile application system, Entune<sup>™</sup>.

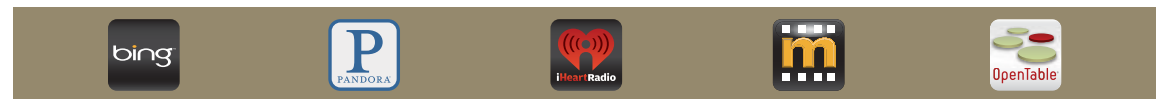
## JBL<sup>®</sup> GreenEdge<sup>™</sup> Audio System

Combining a variety of new eco-conscious technologies, the JBL<sup>®</sup> GreenEdge<sup>™</sup> audio system achieves dramatic energy efficiency while delivering superb audio performance. With reduced power consumption, increased audio performance and lower system weight, the JBL<sup>®</sup> GreenEdge<sup>™</sup> system is a substantial upgrade over conventional audio systems.

The available Entune<sup>™</sup> system is a collection of popular mobile applications and data services integrated with select Toyota vehicles. Entune<sup>™</sup> includes three years of complimentary access to apps and services delivered via most smartphones and some feature phones. (After three years, access charges will apply; excluding Pandora<sup>®</sup>) Once the phone is connected to the vehicle using *Bluetooth*<sup>®</sup> wireless technology or a USB cable, the features of Entune<sup>™</sup> are operated using the vehicle's controls or, for some services, by voice recognition. Entune<sup>™</sup> is scheduled to have mobile apps for Bing<sup>™</sup>, iHeartRadio<sup>®</sup>, MovieTickets.com<sup>®</sup>, OpenTable<sup>®6</sup> and Pandora<sup>®</sup>. The data services of Entune<sup>™</sup> include fuel guide, sports scores, stocks, traffic and weather. See [toyota.com/entune](http://toyota.com/entune) for availability of apps and services.



Toyota does not approve the use of portable handheld devices while driving.



1. See footnote 7 in Disclaimers section. 2. See footnote 10 in Disclaimers section. 3. See footnote 9 in Disclaimers section. 4. See footnote 11 in Disclaimers section. 5. See footnote 4 in Disclaimers section. 6. Available spring 2012 at no charge on Display Audio equipped with Entune<sup>™</sup>

### WORKING IN SPACE

In Camry, rear-seat comfort doesn't take a back seat to front-seat comfort. To help improve rear-seat leg room, we redesigned the shape of the front seats, allowing for additional knee space.



### 8-WAY POWER DRIVER'S SEAT

Adjustable a total of eight ways, the reinvented Camry's available power driver's seat gives you plush and fully customizable comfort.



XLE V6 interior shown in Ivory leather trim with available Premium HDD Navigation<sup>1</sup> with Entune™<sup>2</sup> and JBL® Smart Key System<sup>3</sup> and Safety Connect.<sup>4</sup>

1. See footnote 9 in Disclaimers section. 2. See footnote 10 in Disclaimers section. 3. See footnote 15 in Disclaimers section. 4. See footnote 24 in Disclaimers section.

# Inside, we increased the volume. Then we decreased the volume.

Whether you're talking about interior space or noise levels, volume has a lot to do with driving comfort. In crafting the reinvented 2012 Camry, our engineers found a variety of ingenious ways to add interior volume where it matters most, without increasing the external dimensions of the vehicle. They also reduced the volume of exterior noise entering the cabin. In these ways and more, our engineers were able to improve on what was already a remarkably comfortable vehicle. And that speaks volumes.

## Enhanced Space

To help create Camry's roomy environment, we sculpted the lower door panels to allow for more lateral knee room and reshaped the headlining for greater head room. The general sense of spaciousness, too, was enhanced by opening up the outside view. We engineered pillars that were more streamlined. Upper door surfaces and the top of the instrument panel were reshaped. Even the sun visors were repositioned to further open the forward view.

## Crafted Quiet

Employing sound-imaging instruments, extensive tests were conducted to pinpoint areas where road and engine noise was entering the cabin. Additional sound-absorbing measures were then taken in those areas to help create Camry's whisper-quiet ride.

## Ready Versatility

To help you transport longer items, such as snow skis or that towering new floor lamp, Camry's 60/40 split fold-down rear seat drops to create a handy pass-through to the voluminous trunk.



## REDESIGNED CUP HOLDERS

Camry's accommodating interior is designed to help you manage your liquid assets, providing four cup holders and six bottle holders.



*Every Camry has a story.*

*Every story has an effect.*

*What's yours?*

Share your story at  
[toyota.com/camryeffect](http://toyota.com/camryeffect)

## Nothing helps steady the ride like a few bumps.

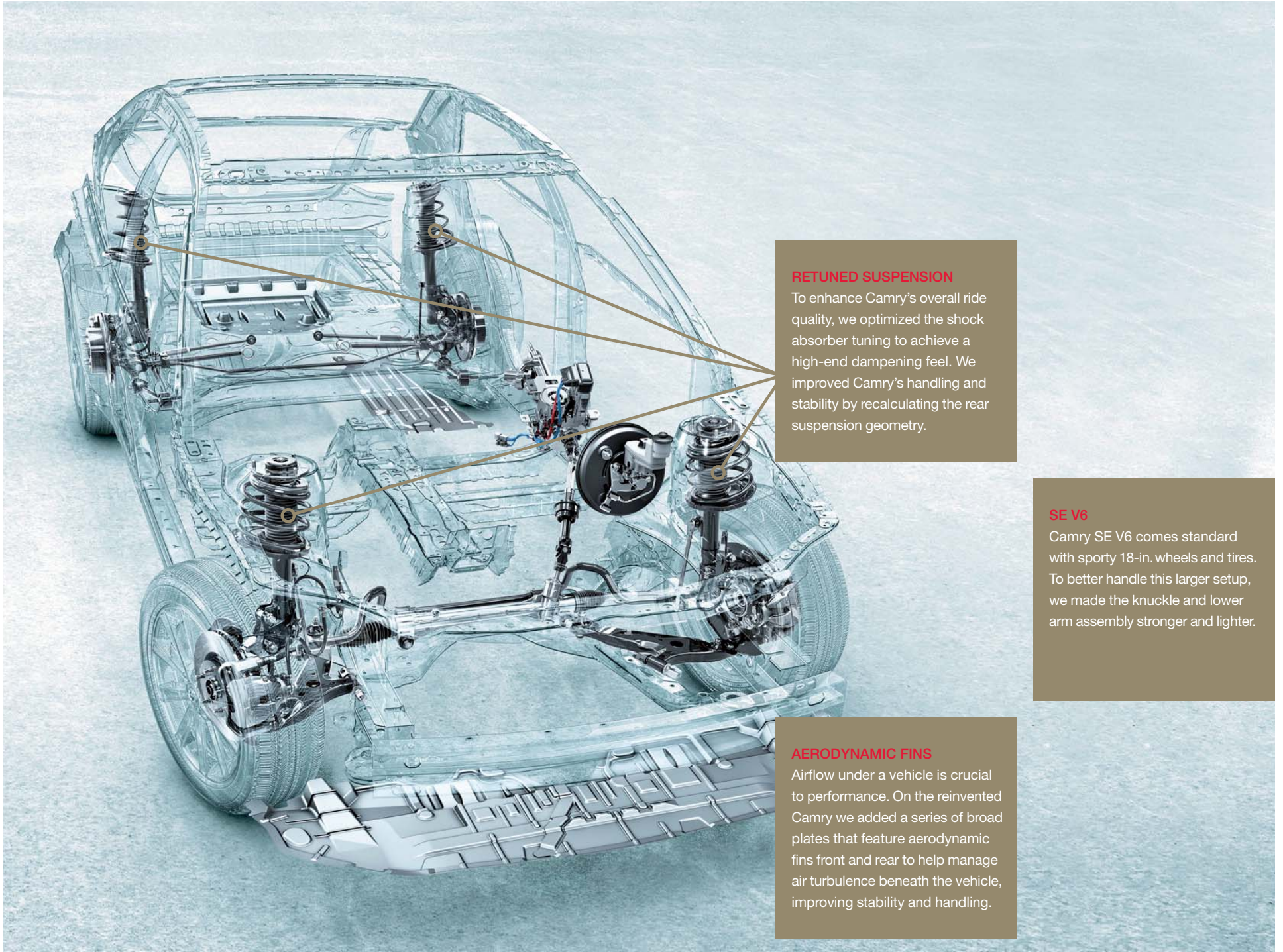
The bumps we're referring to are not the ones you encounter on the road surface. Those are deftly handled by Camry's tuned suspension. The bumps we're talking about are small, specially shaped projections called vortex generators that we positioned on Camry's undercarriage and at key points on the body. It may sound counterintuitive, but vortex generators help stabilize performance by dictating airflow behavior around the vehicle.

---

### HOW DO VORTEX GENERATORS WORK?

As air flows over the surfaces of a moving vehicle, friction can cause that air to tumble over and under itself, increasing drag and creating erratic air pressure forces around the vehicle. Vortex generators alter the airflow before it becomes turbulent, creating a series of controlled spins, or vortices, and helping to equalize air pressure forces, reduce drag and improve vehicle stability.





**RETUNED SUSPENSION**

To enhance Camry's overall ride quality, we optimized the shock absorber tuning to achieve a high-end dampening feel. We improved Camry's handling and stability by recalculating the rear suspension geometry.

**SE V6**

Camry SE V6 comes standard with sporty 18-in. wheels and tires. To better handle this larger setup, we made the knuckle and lower arm assembly stronger and lighter.

**AERODYNAMIC FINS**

Airflow under a vehicle is crucial to performance. On the reinvented Camry we added a series of broad plates that feature aerodynamic fins front and rear to help manage air turbulence beneath the vehicle, improving stability and handling.

# Ready for whatever the future brings. Including corners.

Get behind the wheel of Camry SE and there will be no doubt that this is one forward-looking sedan. Thanks to Variable Valve Timing with intelligence (VVT-i), Camry offers not just assertive power, but sensible mileage too — a good quality to have in this age of high fuel prices. Factor in SE's sport-tuned suspension, and you have an impressive blend of performance and efficiency. This winning combination clearly puts Camry ahead of the curve.

## SE V6 Power

Right feet rejoice. The available 3.5-liter V6 DOHC 24-valve Dual VVT-i engine produces an impressive 268 horsepower and 248 lb.-ft. of torque, while still achieving an EPA-estimated 30 highway mpg rating! Paired with the 6-speed automatic transmission with sequential shift and paddle shifters, this powerplant delivers a driving experience that's nothing short of exhilarating.

## Paddle Shifters

Let your fingers do the shifting. Camry SE's race-inspired paddle shifters deliver real hands-on performance. Not only do the paddles on the 2012 Camry upshift and downshift almost twice as fast as the previous-generation Camry, the system automatically matches revs during downshifting. To shift, simply pull the right paddle to upshift and the left one to downshift.

## Sport Handling

Improving handling dynamics typically involves suspension components. But Camry's impressive agility was also augmented by making the steering more responsive. To accomplish this, we not only increased the steering gear ratio, but also optimized the Electric Power Steering (EPS) system for more sensitivity. Clearly, Camry turns more than just heads.

## 18-In. Alloy Wheels

Style your ride. Standard on the Camry SE V6, these sharp 18-in. alloy wheels offer sporty performance, not to mention sporty looks.

## Moonroof

Things are looking up. Camry's remarkable driving experience is made even more uplifting with an available power tilt/slide moonroof, complete with sliding sunshade.





SE 4-cylinder shown in Barcelona Red Metallic with available Display Audio with Navigation<sup>1</sup> and Entune™<sup>2</sup>

1. See footnote 9 in Disclaimers section. 2. See footnote 10 in Disclaimers section.

## We took America's best-selling car<sup>1</sup> and went even farther.

Over the past 25 years, Camry has won the loyalty of millions with its unique blend of efficiency, features, value and reliability. Now, with the 2012 Camry Hybrid LE delivering an estimated 43 city/39 highway/41 combined mpg;<sup>2</sup> it's more than just economical, it's one of the most fuel-efficient sedans in its class. Plus, it achieves all that while producing 200 hp. Time to add even more Americans to its legion of enthusiasts — though gas station owners may be less than thrilled.



Hybrid XLE shown in Clearwater Blue Metallic with available power tilt/slide moonroof.

1. MotorIntelligence.com, CY 2010 sales. 2. See footnote 29 in Disclaimers section.

### LEADING "GREEN"

For more than a decade, Toyota has been a world leader in the development of eco-sensitive technology with our advanced Hybrid Synergy Drive® system. And with each passing year, this tried and tested system continues to get more efficient, more powerful, more reliable and more popular.

### ECO DRIVE LEVEL DISPLAY<sup>1</sup>

Camry's gauges provide current fuel economy information on the fly and are specially illuminated for quick and easy reading in most light conditions.



Hybrid XLE interior shown in available Ash Ultrasuede® with Display Audio with Navigation<sup>2</sup> and Entune™<sup>3</sup>

1. Based on EPA-estimated 40 city mpg rating and 15.3 gallons of gas. Actual mileage will vary. Actual topography and road conditions are not taken into account. 2. See footnote 9 in Disclaimers section. 3. See footnote 10 in Disclaimers section.

#### **ELECTRIC WATER PUMP**

An electric water pump doesn't employ a v-belt. This design not only improves efficiency, but also shortens engine warm-up time, helping to reduce emissions.

#### **REDUCED VEHICLE WEIGHT**

By reengineering various vehicle components and employing state-of-the-art materials, we reduced Camry Hybrid's overall curb weight by 200 lb.

#### **BELTLESS ENGINE**

Camry's reinvented hybrid engine is entirely beltless. This design not only offers remarkable reliability, but also saves weight, reduces friction and improves fuel economy.

#### **NEWLY REENGINEERED HYBRID ENGINE**

Camry's new hybrid engine features a variety of modifications designed to enhance performance and fuel economy. For starters, the engine employs the Atkinson Cycle, which optimizes the durations of the engine's four strokes to help maximize fuel efficiency. The expansion ratio was increased as well, further boosting gas mileage. A long-port plastic intake manifold, together with a long-branch exhaust manifold, also enhances performance, saves weight and reduces engine noise. The gear-driven balance shaft was even coated with a low-friction resin for low vibration and additional efficiency.

#### **EFFICIENCY IN SPACE**

We engineered a way to move the battery forward, opening up more room in the trunk and ensuring that we didn't take up otherwise usable space.



## Higher blue-sky thinking.

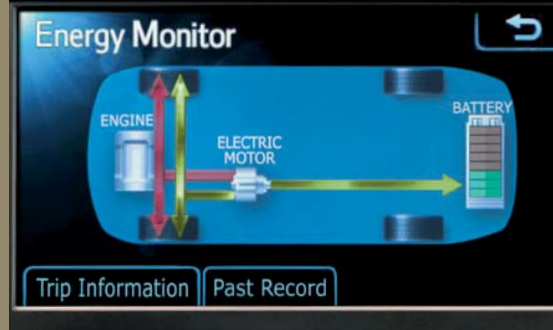
High gas mileage and low emissions are not the only measures of how far our hybrids have come. Camry's reengineered hybrid engine also delivers an astonishing 200 horsepower. In fact, Camry Hybrid boasts a 0-60 time of a mere 7.6 seconds<sup>1</sup>. What's more, this performance is accomplished while producing less vibration and noise, further enhancing the refined driving experience for which this legendary sedan is known.

### LOWER ROLLING RESISTANCE

The use of more advanced tires allows tire air pressure to be increased, thereby reducing rolling resistance and further improving efficiency.

### ENERGY MONITOR

The Multi-Information Display helps keep you continually apprised of the Hybrid Synergy Drive<sup>®</sup> energy flow and its efficient management.



*“The 2012 Camry is a ‘new era’ sedan that stands to redefine the very image of the number one standard mid-size sedan.”*

Yukihiro Okane  
Chief Engineer, Product Planning  
Toyota Development

## We took a hard look at blind spots.

Knowing what's around your vehicle is key to confident driving. That's why the 2012 Camry offers innovative features like the available Blind Spot Monitor (BSM)<sup>1,2</sup> and backup camera.<sup>3,4</sup> By helping to reveal hard-to-see areas, Camry helps keep potentially dangerous situations from escaping your notice. In short, Camry helps keep things that are out of sight from being out of mind.



Hybrid XLE shown in Cypress Pearl with available Blind Spot Monitor (BSM).

1. See footnote 25 in Disclaimers section. 2. Available on XLE and Hybrid XLE models only. 3. See footnote 14 in Disclaimers section. 4. Standard on XLE V6 models only. Available on SE, XLE 4-cylinder and Hybrid XLE models.

### AVAILABLE BLIND SPOT MONITOR (BSM)<sup>1, 2</sup>

Even with properly adjusted side mirrors, adjacent vehicles may enter “blind spots,” areas that are outside of the driver’s view. Camry’s Blind Spot Monitor (BSM) uses radar to scan these blind spots for moving motor vehicles.

### BLIND SPOT MONITOR INDICATORS

Located on both sides of Camry, the monitors identify moving vehicles in its blind spots. If the system detects a vehicle in the area, it illuminates a warning indicator on the appropriate side mirror.



Via Toyota’s 24/7 call center, available Safety Connect<sup>®</sup> offers subscribers helpful features such as Emergency Assistance, Stolen Vehicle Locator, Roadside Assistance and Automatic Collision Notification. Safety Connect<sup>®</sup> also offers the reliability of embedded cellular and GPS technology.



### AVAILABLE SMART KEY SYSTEM<sup>5</sup>

Smart Key offers you a note of enhanced luxury. When you approach Camry with the Smart Key fob in your pocket or purse, the interior illuminates automatically; the doors unlock when you touch either front door handle; the trunk opens with the touch of its handle; and the engine starts with the push of a button.



### AVAILABLE BACKUP CAMERA<sup>3</sup>

When backing up, the area behind Camry that’s visible to the camera is displayed on the touch-screen of the audio system’s display.



1. See footnote 25 in Disclaimers section. 2. Available on XLE and Hybrid XLE models only. 3. See footnote 14 in Disclaimers section. 4. See footnote 24 in Disclaimers section. 5. See footnote 15 in Disclaimers section.

*At Toyota, safety is one of our top priorities. That's why we equipped Camry with an array of both active safety systems, to help keep you out of harm's way, and passive safety systems, to help protect you should a collision occur.*

#### **SMART STOP TECHNOLOGY (SST)<sup>1</sup>**

At speeds greater than five miles per hour, when the accelerator is depressed first and the brakes are then applied firmly for longer than one-half second, Smart Stop Technology is designed to help the driver bring the vehicle to a complete stop.

## **Safety to the power of ten standard airbags.**

As somebody once said, there is safety in numbers. That's why every 2012 Camry comes with a comprehensive airbag system that offers an impressive ten airbags.<sup>2</sup> The system includes both driver and front passenger airbags, front and rear side curtain airbags, front and rear seat-mounted side airbags, and both driver and front passenger knee airbags — all standard equipment.

### **Star Safety System™**

Toyota's Star Safety System™ is an advanced suite of six safety features offered as standard equipment on every Camry. The system includes Enhanced Vehicle Stability Control (VSC),<sup>3</sup> Traction Control (TRAC), Anti-lock Brake System (ABS), Electronic Brake-force Distribution (EBD), Brake Assist (BA)<sup>4</sup> and Smart Stop Technology (SST). Classified as "active" safety features, they're designed to work proactively in certain situations to help prevent accidents from occurring in the first place.



Photo not intended to replicate actual inflated airbags.

1. See footnote 20 in Disclaimers section. 2. See footnote 21 in Disclaimers section. 3. See footnote 18 in Disclaimers section. 4. See footnote 19 in Disclaimers section.

### CRUMPLE ZONES

An important element of occupant protection, crumple zones are structurally engineered to absorb and dissipate energy in the event of a collision by a process known as controlled deformation.

### DRIVER AND FRONT PASSENGER WHIPLASH-INJURY-LESSENING (WIL)<sup>1</sup> SEATS

Camry's front seats are engineered to yield in a controlled fashion in certain rear-end collisions, helping to reduce the risk of injuries.

### LATCH

LATCH (Lower Anchors and Tethers for CHildren) provides an added measure of safety for the smaller members of your family. LATCH includes lower anchors on the outboard rear seats and tether anchors on all rear seats.

### TIRE PRESSURE MONITOR SYSTEM (TPMS)<sup>2</sup>

Proper tire pressure is always important for safe driving. TPMS evaluates the pressure of the tires and issues a warning if the pressure becomes critically low.

### 3-POINT SEATBELTS

Camry provides 3-point seatbelts for all seating positions. The front seats are also equipped with the added safety of pretensioners and force limiters.

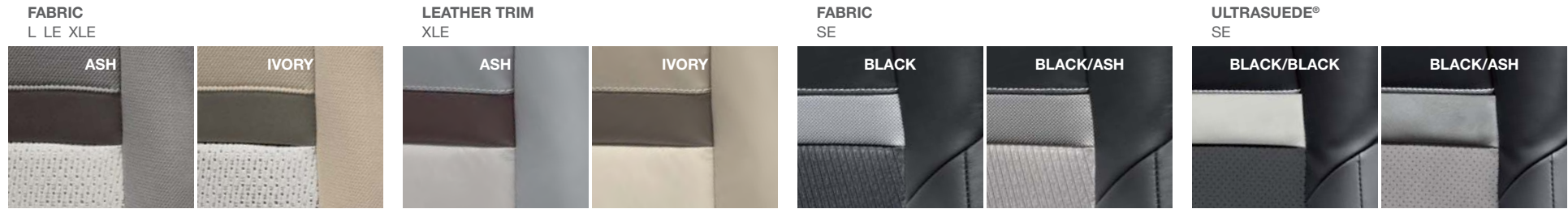


Photo not intended to replicate actual inflated airbags.

1. See footnote 22 in Disclaimers section. 2. See footnote 23 in Disclaimers section.

# Combinations

## FABRIC/LEATHER TRIM COLOR CHOICES



## EXTERIOR/INTERIOR COLOR COMBINATIONS



CLEARWATER BLUE METALLIC<sup>1</sup>



CYPRESS PEARL<sup>1</sup>



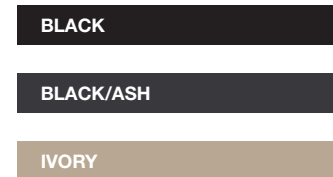
ATTITUDE BLACK METALLIC



COSMIC GRAY MICA



BARCELONA RED METALLIC



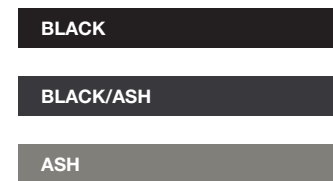
MAGNETIC GRAY METALLIC



SUPER WHITE



CLASSIC SILVER METALLIC



SANDY BEACH METALLIC<sup>1</sup>



## WHEELS

- 1 L and LE 16-in. steel wheel with wheel cover
- 2 XLE 17-in. alloy wheel
- 3 SE 4-cyl. 17-in. alloy wheel
- 4 SE V6 18-in. alloy wheel



1. Not available on SE.

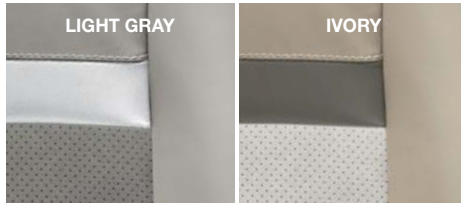
# Hybrid Combinations

## FABRIC/LEATHER TRIM COLOR CHOICES

FABRIC  
HYBRID LE XLE



ULTRASUEDE®  
HYBRID XLE



## EXTERIOR/INTERIOR COLOR COMBINATIONS



ATTITUDE BLACK METALLIC



CLEARWATER BLUE METALLIC



CYPRESS PEARL



BARCELONA RED METALLIC



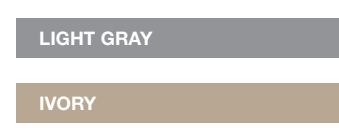
COSMIC GRAY MICA



MAGNETIC GRAY METALLIC



SUPER WHITE



SANDY BEACH METALLIC



CLASSIC SILVER METALLIC



## WHEELS

- 1 Hybrid LE 16-in. steel wheel with wheel cover
- 2 Hybrid XLE 17-in. alloy wheel



# Features<sup>1</sup>

EXTERIOR	L	LE	SE	XLE	HYBRID LE	HYBRID XLE		L	LE	SE	XLE	HYBRID LE	HYBRID XLE
Projector-beam halogen headlamps	S	-	-	-	-	-	16-in. steel wheels with wheel covers and P205/65R16 tires	S	S	-	-	S	-
Projector-beam halogen headlamps with auto on/off feature	-	S	-	S	S	S	17-in. alloy wheels with P215/55R17 tires	-	-	S	S	-	S
Projector-beam halogen headlamps with black sport trim bezels and auto-on/off feature	-	-	S	-	-	-	18-in. alloy wheels with P225/45R18 tires (V6 only)	-	-	S	-	-	-
Integrated fog lamps	-	-	S	S	-	S	Washer-linked intermittent windshield wipers	S	S	S	S	S	S
Sport mesh front grille	-	-	S	-	-	-	Acoustic noise-reducing front windshield	-	-	S <sup>2</sup>	S <sup>2</sup>	S	S
Integrated front and rear underbody spoilers and sport side rocker panels	-	-	S	-	-	-	Color-keyed rear spoiler	-	-	S	-	-	-
Color-keyed power outside mirrors with folding feature	S	S	-	-	S	-	Chrome-tipped exhaust	-	-	S	S	-	S
Color-keyed heated power outside mirrors with folding feature	-	-	S	S	-	S	Dual chrome-tipped exhaust (V6 only)	-	-	S	S	-	-
Power tilt/slide moonroof with one-touch open/close with jam protection, driver and front-passenger illuminated vanity mirrors, and rear-seat reading lamps	-	O <sup>2</sup>	O <sup>2</sup>	S	-	O <sup>2</sup>							
INTERIOR													
Air conditioning with air filter	S	S	S	-	-	-	Backup camera <sup>14</sup>	-	-	P <sup>2</sup>	P <sup>2</sup> /S <sup>3</sup>	-	P <sup>2</sup>
Dual zone automatic climate control with air filter and rear-seat vents	-	-	-	S	-	-	Multi-function in-key remote keyless entry system with lock, two-stage unlock, panic, trunk-release functions and remote illuminated entry	-	S	S <sup>2</sup>	S <sup>2</sup>	-	-
Dual zone automatic climate control with air filter, electric compressor and humidity sensor	-	-	-	-	S	-	Smart Key System <sup>15</sup> on front doors and trunk with Push Button Start and remote illuminated entry	-	-	P <sup>2</sup> /S <sup>3</sup>	P <sup>2</sup> /S <sup>3</sup>	S	S
Dual zone automatic climate control with air filter, electric compressor, humidity sensor and rear-seat vents	-	-	-	-	-	S	Fabric-trimmed front seats with seatback pockets; 6-way adjustable driver's seat; 4-way adjustable front passenger seat	S	S	-	-	S	-
AM/FM CD player with MP3/WMA playback capability, six speakers, auxiliary audio jack, USB <sup>4</sup> port with iPod <sup>85</sup> connectivity and control, auto sound leveling and BLU Logic <sup>®</sup> Hands Free System <sup>6</sup>	S	-	-	-	S	-	Fabric-trimmed front seats with seatback pockets; 8-way power-adjustable driver's seat with power lumbar support; 4-way adjustable front passenger seat	-	O <sup>2</sup>	-	S <sup>2</sup>	-	S
Display Audio — includes 6.1-in. touch-screen, AM/FM CD player with MP3/WMA playback capability, six speakers, auxiliary audio jack, USB <sup>4</sup> port with iPod <sup>85</sup> connectivity and control, vehicle information with customizable settings, and hands-free phone capability, phone book access and music streaming via Bluetooth <sup>®7</sup> wireless technology	-	S	S <sup>3</sup>	S <sup>3</sup>	-	S	Leather-trimmed multi-stage heated front seats with seatback pockets; 8-way power-adjustable driver's seat with power lumbar support; 4-way power-adjustable front passenger seat	-	-	-	P <sup>2</sup> /S <sup>3</sup>	-	-
Display Audio with Navigation <sup>9</sup> and Entune <sup>TM10</sup> — includes 6.1-in. touch-screen, AM/FM CD player with MP3/WMA playback capability, six speakers, SiriusXM Satellite Radio <sup>11</sup> capability (includes three-month trial subscription to XM Select Package), HD Radio <sup>TM12</sup> with iTunes <sup>®</sup> Tagging, <sup>13</sup> auxiliary audio jack, USB <sup>4</sup> port with iPod <sup>85</sup> connectivity and control, vehicle information with customizable settings, and hands-free phone capability, phone book access, advanced voice recognition and music streaming via Bluetooth <sup>®7</sup> wireless technology	-	-	O <sup>2</sup> /S <sup>3</sup>	O <sup>2</sup> /S <sup>3</sup>	-	O <sup>2</sup>	Leather-trimmed Ultrasuede <sup>®</sup> multi-stage heated front seats with seatback pockets; 8-way power-adjustable driver's seat with power lumbar support; 4-way power-adjustable front passenger seat	-	-	-	-	-	P <sup>2</sup>
Display Audio with Navigation <sup>9</sup> , Entune <sup>TM10</sup> and JBL <sup>®</sup> — includes 6.1-in. touch-screen, AM/FM CD player with MP3/WMA playback capability, ten JBL <sup>®</sup> GreenEdge <sup>TM</sup> speakers in eight locations including subwoofer and amplifier, SiriusXM Satellite Radio <sup>11</sup> capability (includes three-month trial subscription to XM Select Package), HD Radio <sup>TM12</sup> with iTunes <sup>®</sup> Tagging, <sup>13</sup> auxiliary audio jack, USB <sup>4</sup> port with iPod <sup>85</sup> connectivity and control, vehicle information with customizable settings, and hands-free phone capability, phone book access, advanced voice recognition and music streaming via Bluetooth <sup>®7</sup> wireless technology	-	-	O <sup>2</sup> , <sup>3</sup>	O <sup>2</sup>	-	O <sup>2</sup>	Sport fabric SofTex-trimmed front seats with seatback pockets; 6-way adjustable driver's seat; 4-way adjustable front passenger seat	-	-	S	-	-	-
Premium HDD Navigation <sup>9</sup> with Entune <sup>TM10</sup> and JBL <sup>®</sup> — includes 7-in. touch-screen with split-screen capability, AM/FM CD player with MP3/WMA playback capability, ten JBL <sup>®</sup> GreenEdge <sup>TM</sup> speakers in eight locations including subwoofer and amplifier, SiriusXM Satellite Radio <sup>11</sup> capability (includes three-month trial subscription to XM Select Package), HD Radio <sup>TM12</sup> with iTunes <sup>®</sup> Tagging, <sup>13</sup> auxiliary audio jack, USB <sup>4</sup> port with iPod <sup>85</sup> connectivity and control, vehicle information with customizable settings, and hands-free phone capability, phone book access, advanced voice recognition and music streaming via Bluetooth <sup>®7</sup> wireless technology	-	-	-	O <sup>2</sup> , <sup>3</sup>	-	O <sup>2</sup>	Sport fabric SofTex-trimmed front seats with seatback pockets; 8-way power-adjustable driver's seat with power lumbar support; 4-way adjustable front passenger seat	-	-	O <sup>2</sup> /S <sup>3</sup>	-	-	-
Entune <sup>TM10</sup> — includes Bing <sup>TM</sup> and Pandora <sup>®</sup> ; real-time info including traffic, weather, fuel prices, sports and stocks. Apps available spring 2012 at no charge include iHeartRadio, MovieTickets.com and OpenTable. <sup>®</sup> Access to Entune <sup>TM10</sup> services is complimentary for three years. See toyota.com/entune for details.	-	-	O <sup>2</sup> /S <sup>3</sup>	O <sup>2</sup> /S <sup>3</sup>	-	O <sup>2</sup>	Sport leather-trimmed Ultrasuede <sup>®</sup> multi-stage heated front seats with seatback pockets; 8-way power-adjustable driver's seat with power lumbar support; 4-way power-adjustable front passenger seat	-	-	P <sup>2</sup>	-	-	-
Entune <sup>TM10</sup> — includes Bing <sup>TM</sup> , iHeartRadio, MovieTickets.com, OpenTable <sup>®</sup> and Pandora <sup>®</sup> ; XM Data Services including NavTraffic, <sup>TM11</sup> NavWeather, <sup>TM</sup> Fuel, and Sports & Stocks. Access to Entune <sup>TM10</sup> services is complimentary for three years. See toyota.com/entune for details.	-	-	-	O <sup>2</sup> , <sup>3</sup>	-	O <sup>2</sup>	60/40 split fold-down rear seat with center armrest with cup holders	S	S	S	S	-	-
							Fold-down rear seat with center armrest with cup holders and pass-through	-	-	-	-	S	S
							Cruise control	S	S	S	S	S	S
							Tilt/telescopic 4-spoke steering wheel with audio controls	-	-	-	-	S	-
							Tilt/telescopic 4-spoke steering wheel with audio controls and Bluetooth <sup>®7</sup> controls	-	S	-	-	-	-
							Leather-trimmed tilt/telescopic 4-spoke steering wheel with Bluetooth <sup>®7</sup> hands-free phone and voice-command controls	-	-	-	S	-	S
							Leather-trimmed tilt/telescopic sport steering wheel with paddle shifters, and Bluetooth <sup>®7</sup> hands-free phone and voice-command controls	-	-	S	-	-	-
							Analog instrumentation with speedometer, tachometer, fuel and average fuel economy gauges; LCD display with odometer, tripmeters, outside temperature, shift-position indicator and scheduled maintenance indicator	S	S	S	-	-	-
							Analog instrumentation with speedometer, tachometer, fuel and instant/average fuel economy gauges; LCD display with odometer, tripmeters, outside temperature, fuel economy history, average fuel economy and distance to empty; shift-position and scheduled maintenance indicator	-	-	-	S	-	-

See numbered footnotes in Disclaimers section.

# Features<sup>1</sup>

## INTERIOR (continued)

	L	LE	SE	XLE	HYBRID LE	HYBRID XLE		L	LE	SE	XLE	HYBRID LE	HYBRID XLE
Optitron instrumentation with speedometer, hybrid system power meter, fuel and instant/average fuel economy gauges; LCD Multi-Information Display with odometer, tripmeters, outside temperature, fuel economy history, instant/average fuel economy, distance to empty and average speed; shift-position indicator, scheduled maintenance indicator, EV <sup>16</sup> and ECO mode indicators, ECO Driving Indicator and warning messages	—	—	—	—	S	S	Day/night rearview mirror	S	S	S	S <sup>8</sup>	S	—
Silver interior trim with silver interior door handles	—	—	S	—	—	—	Auto-dimming rearview mirror with compass	—	—	P <sup>2</sup>	P <sup>2</sup> /S <sup>3</sup>	—	S
Wood-grain-style interior trim with chrome interior door handles	—	—	—	S	—	—	Overhead console with maplamps and sunglasses storage	S	S	S	S	S	S
Metallic-tech-grain interior trim with chrome interior door handles	—	—	—	—	S	S	HomeLink <sup>®17</sup> universal transceiver	—	—	P <sup>2</sup>	P <sup>2</sup> /S <sup>3</sup>	—	P <sup>2</sup>
Power door locks with shift-linked automatic locking feature with anti-lockout feature	—	S	S	S	S	S	Covered center console with sliding cover, armrest and storage	S	S	S	S	S	S
Power windows with driver-side auto up/down, jam protection in all positions and retained-power features	S	S	S	S	S	S	Illuminated glove compartment	S	S	S	S	S	S
Rear window defogger with timer	S	S	S	S	S	S	One 12V auxiliary power outlet	S	—	—	—	S	—
							Two 12V auxiliary power outlets	—	S	S	S	—	S
							Dual sun visors with sliding extensions	S	S	S	S	S	S
							Two front and two rear cup holders; two front door and four rear bottle holders	S	S	S	S	S	S

## SAFETY AND CONVENIENCE

<b>STAR SAFETY SYSTEM</b> ™ Star Safety System™ — includes Enhanced Vehicle Stability Control (VSC); <sup>8</sup> Traction Control (TRAC), 4-wheel Anti-lock Brake System (ABS), Electronic Brake-force Distribution (EBD), Brake Assist (BA) <sup>19</sup> and Smart Stop Technology (SST) <sup>20</sup>	S	S	S	S	S	S
Ten airbags <sup>21</sup> — includes driver and front passenger Advanced Airbag System, driver and front passenger seat-mounted side airbags, driver and front passenger knee airbags, rear seat-mounted side airbags, and front and rear side curtain airbags	S	S	S	S	S	S
Driver and front passenger Whiplash-Injury-Lessening (WIL) <sup>22</sup> seats	S	S	S	S	S	S
3-point seatbelts for all seating positions; driver-side Emergency Locking Retractor (ELR) and Automatic/Emergency Locking Retractor (ALR/ELR) on all passenger seat belts	S	S	S	S	S	S
LATCH (Lower Anchors and Tethers for CHildren) includes lower anchors on outboard rear seats and tether anchors on all rear seats	S	S	S	S	S	S
Child-protector rear door locks and power window lockout control	S	S	S	S	S	S
Energy-absorbing collapsible steering column	S	S	S	S	S	S

Front and rear energy-absorbing crumple zones	S	S	S	S	S	S
Side-impact door beams	S	S	S	S	S	S
Tire Pressure Monitor System (TPMS) <sup>23</sup>	S	S	S	S	S	S
Collision sensors: deactivate high-voltage battery	—	—	—	—	S	S
Daytime Running Lights (DRL) with on/off feature	S	S	S	S	S	S
Safety Connect <sup>®24</sup> — includes Emergency Assistance, Stolen Vehicle Locator, Roadside Assistance and Automatic Collision Notification. Available by subscription. Complimentary one-year trial subscription.	—	—	—	O <sup>2</sup>	—	O <sup>2</sup>
Blind Spot Monitor (BSM) <sup>25</sup>	—	—	—	O <sup>2</sup>	—	O <sup>2</sup>
Battery-saver feature: deactivates interior lamps after 20 minutes	S	S	S	S	S	S
Engine immobilizer <sup>26</sup>	S	S	S	S	S	S
Anti-theft system with alarm	—	—	P <sup>2</sup>	P <sup>2</sup> /S <sup>3</sup>	—	P <sup>2</sup>

S = Standard    O = Optional    — = Not Available    P = Feature is available as part of an option package.

# Specifications

MECHANICAL AND PERFORMANCE	L 4-CYLINDER	LE 4-CYLINDER	SE 4-CYLINDER	SE V6	XLE 4-CYLINDER	XLE V6	
Engine	2.5-Liter 4-Cylinder DOHC 16-Valve Dual VVT-i; 178 hp @ 6000 rpm; <sup>27</sup> 170 lb.-ft. @ 4100 rpm	2.5-Liter 4-Cylinder DOHC 16-Valve Dual VVT-i; 178 hp @ 6000 rpm; <sup>27</sup> 170 lb.-ft. @ 4100 rpm	2.5-Liter 4-Cylinder DOHC 16-Valve Dual VVT-i; 178 hp @ 6000 rpm; <sup>27</sup> 170 lb.-ft. @ 4100 rpm	3.5-Liter V6 DOHC 24-Valve Dual VVT-i; 268 hp @ 6200 rpm 248 lb.-ft. @ 4700 rpm	3.5-Liter V6 DOHC 24-Valve Dual VVT-i; 268 hp @ 6200 rpm 248 lb.-ft. @ 4700 rpm	2.5-Liter 4-Cylinder DOHC 16-Valve Dual VVT-i; 178 hp @ 6000 rpm; <sup>27</sup> 170 lb.-ft. @ 4100 rpm	3.5-Liter V6 DOHC 24-Valve Dual VVT-i; 268 hp @ 6200 rpm 248 lb.-ft. @ 4700 rpm
<b>IGNITION SYSTEM</b>							
Electronic, with Toyota Direct Ignition (TDI)	Standard	Standard	Standard	Standard	Standard	Standard	
<b>EMISSION RATING</b>							
Ultra Low Emission Vehicle II (ULEV-II)	Standard	Standard	Standard	Standard	Standard	Standard	
<b>TRANSMISSION</b>							
6-speed Electronically Controlled automatic Transmission with intelligence (ECT-i) and sequential shift mode (SE model adds paddle shifters)							
<b>DRIVETRAIN</b>							
Front-Wheel Drive	Standard	Standard	Standard	Standard	Standard	Standard	
<b>BODY CONSTRUCTION</b>							
Unitized body with front and rear anti-vibration sub-frames	Standard	Standard	Standard	Standard	Standard	Standard	
<b>SUSPENSION</b>							
MacPherson strut front suspension with gas-filled shock absorbers and stabilizer bar; dual-link independent MacPherson strut rear suspension with gas-filled shock absorbers and stabilizer bar (SE model adds sport-tuned shock absorbers, springs and solid stabilizer bar)							
<b>STEERING</b>							
Electric Power Steering (EPS); power-assisted rack-and-pinion	Standard	Standard	Standard	Standard	Standard	Standard	
Turning circle diameter, curb to curb (ft.)	36.7	36.7	36.7	36.7	36.7	36.7	
<b>BRAKES</b>							
Power-assisted ventilated 11.65-in. front disc brakes; solid 11-in. rear disc brakes with hydraulic brake booster, Electronically Controlled Braking (ECB) system and Star Safety System™							
<b>EXTERIOR DIMENSIONS (in.)</b>							
Overall height	57.9	57.9	57.9	57.9	57.9	57.9	
Overall width	71.7	71.7	71.7	71.7	71.7	71.7	
Overall length	189.2	189.2	189.2	189.2	189.2	189.2	
Wheelbase	109.3	109.3	109.3	109.3	109.3	109.3	
Ground clearance	6.1	6.1	6.1	6.1	6.1	6.1	
Track (front/rear)	62.4/62.0	62.4/62.0	62.0/61.6	62.0/61.6	62.0/61.6	62.0/61.6	
Coefficient of drag (Cd)	0.28	0.28	0.28	0.28	0.28	0.28	
<b>INTERIOR DIMENSIONS (front/rear) (in.)</b>							
Head room							
without moonroof	38.8/38.1	38.8/38.1	38.8/38.1	38.8/38.1	38.8/38.1	38.8/38.1	
with moonroof	NA	37.9/38.0	37.9/38.0	37.9/38.0	37.9/38.0	37.9/38.0	
Shoulder room	58.0/56.6	58.0/56.6	58.0/56.6	58.0/56.6	58.0/56.6	58.0/56.6	
Hip room	54.5/54.5	54.5/54.5	54.5/54.5	54.5/54.5	54.5/54.5	54.5/54.5	
Leg room	41.6/38.9	41.6/38.9	41.6/38.9	41.6/38.9	41.6/38.9	41.6/38.9	
<b>WEIGHTS AND CAPACITIES</b>							
Curb weight (lb.)	3190	3190	3240	3420	3245	3395	
EPA passenger volume (cu. ft.)							
without moonroof	102.7	102.7	102.7	102.7	102.7	102.7	
with moonroof	NA	101.3	101.3	101.3	101.3	101.3	
Cargo volume <sup>28</sup> rear seatbacks up (cu. ft.)	15.4	15.4	15.4	15.4	15.4	15.4	
Fuel tank (gal.)	17.0	17.0	17.0	17.0	17.0	17.0	
Seating capacity	5	5	5	5	5	5	
<b>TIRES</b>							
Type							
All-Season	Standard	Standard	Standard	Standard	Standard	Standard	
Spare							
Temporary	Standard	Standard	Standard	Standard	Standard	Standard	
<b>MILEAGE ESTIMATES (mpg city/highway/combined)<sup>29</sup></b>							
	25/35/28	25/35/28	25/35/28	21/30/25	25/35/28	21/30/25	

See numbered footnotes in Disclaimers section.

# Hybrid Specifications

## MECHANICAL AND PERFORMANCE

	HYBRID LE	HYBRID XLE
Engine	Hybrid engine: 2.5-Liter 4-Cylinder Dual DOHC 16-Valve VVT-i, EV <sup>16</sup> and ECO modes; 200 hybrid system net hp (149 kW)	Hybrid engine: 2.5-Liter 4-Cylinder DOHC 16-Valve Dual VVT-i, EV <sup>16</sup> and ECO modes; 200 hybrid system net hp (149 kW)
<b>IGNITION SYSTEM</b>		
Electronic, with Toyota Direct Ignition (TDI)	Standard	Standard
<b>EMISSION RATING</b>		
Advanced Technology Partial Zero Emission Vehicle (AT-PZEV) <sup>30</sup>	Standard	Standard
<b>ELECTRIC MOTOR</b>		
Motor Type	Permanent magnet AC synchronous motor	
Voltage	650V maximum	
<b>TRACTION BATTERY</b>		
Type	Sealed Nickel-Metal Hydride (Ni-MH) <sup>32</sup>	
Voltage	244.8V maximum	
<b>TRANSMISSION</b>		
Electronically controlled Continuously Variable Transmission (ECVT)	Standard	Standard
<b>DRIVETRAIN</b>		
Front-Wheel Drive	Standard	Standard
<b>BODY CONSTRUCTION</b>		
Unitized body with front and rear anti-vibration sub-frames	Standard	Standard
<b>SUSPENSION</b>		
MacPherson strut front suspension with gas-filled shock absorbers and stabilizer bar; dual-link independent MacPherson strut rear suspension with gas-filled shock absorbers and stabilizer bar		
<b>STEERING</b>		
Electric Power Steering (EPS); power-assisted rack-and-pinion	Standard	Standard
Turning circle diameter, curb to curb (ft.)	36.7	36.7
<b>BRAKES</b>		
Power-assisted ventilated 11.65-in. front disc brakes; solid 11-in. rear disc brakes with hydraulic brake booster, Electronically Controlled Braking (ECB) system, integrated regenerative braking and Star Safety System™		
<b>EXTERIOR DIMENSIONS (in.)</b>		
Overall height, unloaded	57.9	57.9
Overall width	71.7	71.7
Overall length	189.2	189.2
Wheelbase	109.3	109.3
Ground clearance	6.1	6.1
Track (front/rear)	62.4/62.0	62.0/61.6
Coefficient of drag (Cd)	0.27	0.27
<b>INTERIOR DIMENSIONS (front/rear) (in.)</b>		
Head room		
without moonroof	38.8/38.1	38.8/38.1
with moonroof	NA	37.9/38.0
Shoulder room	58.0/56.6	58.0/56.6
Hip room	54.5/54.5	54.5/54.5
Leg room	41.6/38.9	41.6/38.9
<b>EXTERIOR DIMENSIONS (in.)</b>		
Curb weight (lb.)	3435	3525
EPA passenger volume (cu. ft.)		
without moonroof/with moonroof	102.7/NA	102.7/101.3
Cargo volume; <sup>28</sup> rear seatbacks up (cu. ft.)	13.1	13.1
Fuel tank (gal.)	17.0	17.0
Seating capacity	5	5
<b>TIRES</b>		
Type; All-Season	Standard	Standard
Spare; Temporary	Standard	Standard
<b>MILEAGE ESTIMATES (mpg city/highway/combined)<sup>29</sup></b>		
	43/39/41	40/38/40

See numbered footnotes in Disclaimers section.

## PACKAGES AND OPTIONS

### L

No options

### LE

- 8-way power-adjustable driver's seat
- Power tilt/slide moonroof  
*(Requires 8-way power-adjustable driver's seat)*

### SE 4-cyl.

- 8-way power-adjustable driver's seat
- Power tilt/slide moonroof  
*(Requires 8-way power-adjustable driver's seat)*
- Display Audio with Navigation<sup>9</sup> and Entune™<sup>10</sup>  
*(Requires 8-way power-adjustable driver's seat)*
- Convenience Package includes
  - Backup camera<sup>15</sup>
  - Auto-dimming rearview mirror with compass
  - HomeLink<sup>®17</sup> universal transceiver
  - Anti-theft system with alarm
  - Smart Key System<sup>15</sup> with Push Button Start  
*(Requires power tilt/slide moonroof, and Display Audio with Navigation<sup>9</sup> and Entune™<sup>10</sup>)*
- Leather Package  
*(Requires Convenience Package)*

### SE V6

- Power tilt/slide moonroof
- Convenience Package includes
  - Backup camera<sup>14</sup>
  - Auto-dimming rearview mirror with compass
  - HomeLink<sup>®17</sup> universal transceiver
  - Anti-theft system with alarm  
*(Requires power tilt/slide moonroof)*
- Leather Package  
*(Requires Convenience Package)*
- Display Audio with Navigation<sup>9</sup>, Entune™<sup>10</sup> and JBL®  
*(Requires Leather Package)*

### XLE 4-cyl.

- Display Audio with Navigation<sup>9</sup> and Entune™<sup>10</sup>
- Convenience Package includes
  - Backup camera<sup>14</sup>
  - Auto-dimming rearview mirror with compass
  - HomeLink<sup>®17</sup> universal transceiver
  - Anti-theft system with alarm
  - Smart Key System<sup>15</sup> with Push Button Start
- Leather Package  
*(Requires Convenience Package)*
- Display Audio with Navigation<sup>9</sup>, Entune™<sup>10</sup> and JBL®, and Blind Spot Monitor (BSM)<sup>25</sup> and Safety Connect<sup>®24</sup>  
*(Requires Leather Package)*

### XLE V6

- Display Audio with Navigation<sup>9</sup>, Entune™<sup>10</sup> and JBL®, and Blind Spot Monitor (BSM)<sup>25</sup> and Safety Connect<sup>®24</sup>
- Premium HDD Navigation<sup>9</sup>, Entune™<sup>10</sup> and JBL®, and Blind Spot Monitor (BSM)<sup>25</sup> and Safety Connect<sup>®24</sup>

### Hybrid LE

No options

### Hybrid XLE

- Convenience Package includes
  - Backup camera<sup>14</sup>
  - HomeLink<sup>®17</sup> universal transceiver
  - Anti-theft system with alarm
- Display Audio with Navigation<sup>9</sup> and Entune™<sup>10</sup>
- Power tilt/slide moonroof  
*(Requires Convenience Package, and Display Audio with Navigation<sup>9</sup> and Entune™<sup>10</sup>)*
- Leather Package  
*(Requires power tilt/slide moonroof)*
- Display Audio with Navigation<sup>9</sup>, Entune™<sup>10</sup> and JBL®, and Blind Spot Monitor (BSM)<sup>25</sup> and Safety Connect<sup>®24</sup>  
*(Requires Leather Package)*
- Premium HDD Navigation, Entune™<sup>10</sup> and JBL®, and Blind Spot Monitor (BSM)<sup>25</sup> and Safety Connect<sup>®24</sup>  
*(Requires Leather Package)*

## TOYOTA FINANCIAL SERVICES



Toyota Rewards Visa®

Toyota helps you get more out of every dollar you spend. By rewarding you for every purchase you make, the Toyota Rewards Visa® adds even more value to doing the things you love. Turn everything you buy into points to redeem toward parts, accessories or an eligible vehicle purchase or lease at your Toyota dealer. Earn 5 points for every \$1 spent at participating Toyota dealers and 1 point for every \$1 spent everywhere else Visa is accepted.\*

Visit [www.toyotarewardsvisa.com](http://www.toyotarewardsvisa.com) for complete details.

Toyota Financial Services (TFS)<sup>†</sup> is a leading provider of automotive financial services, offering an extensive line of financing plans along with a variety of vehicle and payment protection products to Toyota customers and dealers in the U.S. For more information on TFS products and services, visit [www.toyotafinancial.com](http://www.toyotafinancial.com)

\*On approved credit. You must have a valid permanent home address in the 50 United States or the District of Columbia. Terms, conditions and restrictions apply and are fully described in the Toyota Rewards Visa Cardmember Agreement and the Toyota Rewards Program Terms and Conditions received with your card. Points earned are based on net purchases. Points-earning maximums apply and points will expire as described in the Rewards Terms and Conditions. Redemption only available at participating Toyota dealerships in the continental U.S. and Alaska. Points cannot be redeemed for cash. Please contact your participating Toyota dealer for information regarding restrictions your dealer may impose on the use of credit cards related to vehicle purchases or leases. The creditor and issuer of the Toyota Rewards Visa is Toyota Financial Savings Bank. Toyota Financial Services is a service mark used by Toyota Financial Savings Bank.

<sup>†</sup>Toyota Financial Services is a service mark for Toyota Motor Credit Corporation and Toyota Motor Insurance Services, Inc.

See numbered footnotes in Disclaimers section.

## DISCLAIMERS

1. Toyota strives to build vehicles to match customer interest and thus they typically are built with popular options and option packages. Not all options/packages are available separately and some may not be available in all regions of the country. See [toyota.com](#) for information about options/packages commonly available in your area. If you would prefer a vehicle without any or with different options, contact your dealer to check for current availability or the possibility of placing a special order. 2. See Packages and Options section for availability, details and requirements. 3. V6 only. 4. May not be compatible with all mobile phones, MP3/WMA players and like models. 5. iPod® is a registered trademark of Apple Inc. All rights reserved. 6. Performance of BLU Logic compatible phones will vary based on phone software version, coverage, and your wireless carrier. See [www.blulogicupdate.com](#) for more details. 7. The Bluetooth® word mark and logos are registered trademarks owned by Bluetooth SIG, Inc. and any use of such marks by Toyota is under license. Other trademarks and trade names are those of their respective owners. The Bluetooth® wireless technology phones listed on [toyota.com](#) have been tested for compatibility with Toyota vehicles. Performance will vary based on phone software version, coverage and your wireless carrier. Phones are warranted by their manufacturer, not Toyota. 8. 4-cylinder only. 9. Availability and accuracy of the information provided by the navigation system or any XM services mentioned (if installed) are dependent upon many factors. Use common sense when relying on information provided. Services not available in every city or roadway. Periodic navigation updates available at additional cost. See your *Navigation System Owner's Manual* or contact XM for details. 10. Be sure to obey traffic regulations and maintain awareness of road and traffic conditions. Select Entune™ apps use a large amount of data and you are responsible for all data charges. Apps and services vary by phone and carrier. Not all apps and data services are available initially. Apps identified by "TM" or "®" are trademarks or registered trademarks of their respective companies and cannot be used without permission. See [toyota.com/entune](#) for the latest information regarding apps and services. 11. XM services require a subscription after trial period, and are sold separately or as a package. **Subscriptions governed by SiriusXM Customer Agreement; see [www.siriusxm.com](#). If you decide to continue your XM service at the end of your complimentary trial, the plan you choose will automatically renew and bill at then-current rates until you call 1-866-635-2349 to cancel.** Fees and programming subject to change. Available only to those at least 18 years of age in the 48 contiguous United States and D.C. 12. HD Radio™ Technology manufactured under license from iBiquity Digital Corporation U.S. and Foreign Patents. HD Radio™ and the HD, HD Radio, and "Arc" logos are proprietary trademarks of iBiquity Digital Corp. 13. iTunes® Tagging is a registered trademark of Apple Inc. All rights reserved. 14. The backup camera does not provide a comprehensive view of the rear area of the vehicle. You should also look around outside your vehicle and use your mirrors to confirm rearward clearance. Cold weather will limit effectiveness and view may become cloudy. 15. The Smart Key System may interfere with some pacemakers or cardiac defibrillators. If you have one of these medical devices, please talk to your doctor to see if you should deactivate this system. 16. CAUTION! When driving a hybrid vehicle, pay special attention to the area around the vehicle. Because there is little vehicle noise in electric-only mode, pedestrians, people riding bicycles or other people and vehicles in the area may not be aware of the vehicle starting off or approaching them, so take extra care while driving. 17. HomeLink® is a registered trademark of Johnson Controls, Inc. 18. Vehicle Stability Control (VSC) is an electronic system designed to help the driver maintain vehicle control under adverse conditions. It is not a substitute for safe driving practices. Factors including speed, road conditions and driver steering input can all affect whether VSC will be effective in preventing a loss of control. Please see your *Owner's Manual* for further details. 19. Brake Assist is designed to help the driver take full advantage of the benefits of ABS. It is not a substitute for safe driving practices. Braking effectiveness also depends on proper brake-system maintenance and tire and road conditions. 20. Smart Stop Technology operates only in the event of certain simultaneous brake and gas pedal applications. When engaged, the system will reduce engine power to help the brakes bring the vehicle to a stop. Factors including speed, road conditions and driver input can all impact stopping distance. Smart Stop Technology is not a substitute for safe and attentive driving and does not guarantee instant stopping. Please see your *Owner's Manual* for further details. 21. All the airbag (AB) systems are Supplemental Restraint Systems. All ABs (if installed) are designed to inflate only under certain conditions and in certain types of severe collisions: frontal and knee ABs typically inflate in frontal collisions; side and side curtain ABs in side collisions; Roll-Sensing Curtain ABs at a severe tilt degree, roll or lateral G-force. In all other accidents, the ABs will not inflate. To decrease the risk of injury from an inflating AB, always wear seatbelts, sit upright in the middle of the seat as far back as possible and do not lean against the door. Do not put objects in front of an AB or around the seatback. Do not use a rearward-facing child seat in any front passenger seat. The force of an inflating AB may cause serious injury or death. See your *Owner's Manual* for further information/warnings. 22. Whiplash-Injury-Lessening front seats can help reduce the severity of whiplash injury in certain rear-end collisions. 23. The Toyota Tire Pressure Monitor alerts the driver when tire pressure is critically low. For optimal tire wear and performance, tire pressure should be checked regularly with a gauge; do not rely solely on the monitor system. See your *Owner's Manual* for details. 24. Available on select Toyota models. Contact with the Safety Connect® response center is dependent upon the telematics device being in operative condition, cellular connection availability, navigation map data and GPS satellite signal reception, which can limit the ability to reach the response center or receive emergency service support. Enrollment and Telematics Subscription Service Agreement required. One-year trial subscription available only with new vehicle purchase of Safety Connect®-equipped vehicles. Additional subscription terms available; charges vary by subscription term selected. 25. Do not rely exclusively on the Blind Spot Monitor to determine if a lane change is safe. Always look over your shoulder and use your turn signal before changing lanes. There are several limitations to the function, detection, range and clarity of the monitor. For a complete list of limitations and directions regarding use of the monitor, please see the *Owner's Manual*. 26. The engine immobilizer is a state-of-the-art anti-theft system. When you insert your key into the ignition switch, the key transmits an electronic code to the vehicle. The engine will only start if the code in the transponder chip inside the key matches the code in the vehicle's immobilizer. Because the transponder chip is embedded in the key, it can be costly to replace. If you lose a key, your Toyota dealer can help, or you can find a qualified independent locksmith to replace your key or perform high-security key services at [www.aloa.org](#) 27. In certain areas, 4-cylinder models are equipped as Partial Zero Emission Vehicles (PZEV). Equipment causes nominal reduction in horsepower (from 178 hp to 173 hp) and torque (from 170 lb.-ft. to 165 lb.-ft.). For Camry 4-cylinder models certified as Partial Zero Emission Vehicles (PZEV), all emissions components are covered for 15 years or 150,000 miles, whichever occurs first, for performance or defect. 28. Cargo and load capacity limited by weight and distribution. 29. 2012 EPA-estimated mileage. Actual mileage will vary. 30. AT-PZEV rated by the California Air Resources Board. Meets Tier-2/Bin-3 Federal emissions standard. For more information please visit [www.arb.ca.gov](#) 31. Hybrid vehicle battery expected life is 150,000 miles based on laboratory bench testing.

## WARRANTIES

Every Toyota Car, Truck and SUV is built to exceptional standards. And that's not idle boasting. We back it up with these Limited Warranty Coverages:

**Basic:** 36 months/36,000 miles (all components other than normal wear and maintenance items).

**Hybrid-Related Component Coverage:** Hybrid-related components, including the HV battery, battery control module, hybrid control module and inverter with converter, are covered for 8 years/100,000 miles. The HV battery may have longer coverage under emissions warranty. Refer to applicable *Warranty and Maintenance Guide* for details.

**Powertrain:** 60 months/60,000 miles (engine, transmission/transaxle, drive system, seatbelts and airbags).

**Rust-Through:** 60 months/unlimited miles (corrosion perforation of sheet metal).

**Emissions:** Coverages vary under Federal and California regulations. Refer to applicable *Warranty and Maintenance Guide* for details.

Some vehicles are shown with available equipment. Seatbelts should be worn at all times. For details on vehicle specifications, standard features and available equipment in your area, contact your Toyota dealer. A vehicle with particular equipment may not be available at the dealership. Ask your Toyota dealer to help locate a specifically equipped vehicle.

**Accessories:** For Genuine Toyota Accessories purchased at the time of the new vehicle purchase, the Toyota Accessory Warranty coverage is in effect for 36 months/36,000 miles from the vehicle's in-service date, which is the same coverage as the Toyota New Vehicle Limited Warranty.

For Genuine Toyota Accessories purchased after the new vehicle purchase the coverage is 12 months, regardless of mileage, from the date the accessory was installed on the vehicle, or the remainder of any applicable new vehicle warranty, whichever provides greater coverage, with the exception of car covers. Car covers are warranted for 12 months from the date of purchase and do not assume any coverage under the Toyota New Vehicle Limited Warranty.

You may be eligible for transportation assistance if it's necessary that your vehicle be kept overnight for repairs covered under warranty. Please see your authorized Toyota dealership for further details.

For complete details about Toyota's warranties, please visit [www.toyota.com](#), refer to the applicable *Warranty and Maintenance Guide* or see your Toyota dealer.

All information presented herein is based on data available at the time of posting, is subject to change without notice and pertains specifically to mainland U.S.A. vehicles only. Prototypes shown. Actual production vehicles may vary.