

2019 86



Adrenaline in its purest form. The 2019 Toyota 86.

When the road comes calling, answer it with the pure driving experience of the 2019 Toyota 86. A sports car in the truest sense, its responsive 2.0L Boxer engine and short-throw 6-speed manual transmission engage the senses to deliver authentic back-road thrills. Or opt for the available paddle-shifting 6-speed automatic for fast, smooth shifts and precise control. Either way, 86 is just as comfortable cruising down the freeway as it is at devouring apexes. So whether workdays or track days are your priority, 86 is engineered to deliver. The road is calling. Strap in.



86 GT shown in Halo.²⁶

See numbered footnotes in Disclosures section.

Built for those who take the long way there.

The 86 GT elevates 86 from track warrior to grand touring machine. Amenities exclusive to the GT include heated front seats with leather-trimmed side bolsters, silver contrast stitching and dual zone climate control, along with unique aerodynamic components that are as functional as they are stylish.



FOCUSED COCKPIT

86 GT takes the driver-centric cabin to a whole new level. Silver contrast stitching accents the leather-lined bolsters of the heated sport front seats, steering wheel, shift boot and door cards. A unique instrument panel, featuring toggle-style switches and Push Button Start, further speak to this car's performance pedigree.



FUNCTIONAL AERODYNAMICS

The 86 GT comes equipped with a standard rear wing that expertly blends function and style. Additionally, unique end plates have been designed to capture less turbulent air. Together with the underbody aerodynamic panel, this wing allows for optimal aerodynamic performance, helping 86 GT achieve a drag coefficient of just 0.27.



AGGRESSIVE DESIGN

True to 86 GT's assertive nature, the standard rear wing is a stealthy matte black, while LED fog lights and color-keyed outside mirrors add a definitive touch. Inside, the GT's standard 4.2-in. TFT Multi-Information Display (MID) offers a stylish way to keep tabs on pertinent performance data, including lap timer, horsepower/torque curves, and a G-force friction circle.

PERFORMANCE/HANDLING



86 shown in Ablaze and Oceanic with available TRD 18-in. alloy wheels.

Born on the track. Bred for the streets.

To be quick, one has to be balanced. Each facet of performance — speed, braking, handling — needs to unite in harmony in order to deliver maximum thrills. And with the 2019 Toyota 86, each aspect was carefully engineered to unite driver, car and road. Smart design and cutting-edge materials help make the body of 86 light and strong, helping boost efficiency and overall performance. This design also places the 2.0-liter Boxer engine low to the ground, helping optimize the center of gravity and front/rear weight distribution. It's a platform built for racing, but still civilized on the streets, and it gives you the best of all worlds. The road is calling — let's go.



SPORT-TUNED SUSPENSION

The 2019 86 features a sport-tuned suspension designed to sharpen turn-in and enhance grip over uneven surfaces, enabling you to carve those corners with surgical precision. And when the drive calls for calmer inputs, like when cruising in the city, this suspension is supple enough to let everyone ride in total comfort.



BODY-STRENGTH REINFORCEMENT

Intelligent use of high-strength materials, additional spot welds and advanced construction techniques help reinforce the body strength of 86. And with this strength comes improved body rigidity, which helps reduce unwanted noise, harshness and vibration. Better yet, this strength also works as a performance enhancer, giving 86 exceptional acceleration, braking and handling capabilities.



VEHICLE STABILITY CONTROL¹⁴ TRACK MODE

When on a racetrack, the Vehicle Stability Control (VSC) Track Mode helps you push the limits of performance. When in Track Mode, this system allows you to approach the handling limits of 86 before the VSC kicks in, after which the system helps to gently nudge you back on your desired driving line.

PERFORMANCE/DRIVING EXPERIENCE



86 GT shown in Halo.²⁶

See numbered footnotes in Disclosures section.

The hustle behind the moves.

86 is more powerful than ever, with its high-tech Boxer engine delivering up to an impressive 205 horsepower²² and 156 lb.-ft. of torque in manual transmission versions. And with a 7200 rpm redline, the thrills build with the revs. A close-ratio 6-speed transmission comes standard, giving you quickness off the line and the power you want in the corners. For the driving purist, the standard manual transmission gives short, precise throws for a driving experience like no other. And for those who prefer two pedals, the available 6-speed Electronically Controlled automatic Transmission with intelligence (ECT-i) features race car-inspired paddle shifters mounted on the steering wheel. So no matter your preferred driving style, you're always in control.



BOXER-FOUR ENGINE

Powering 86 is a potent 2.0-liter flat-four engine. With compact packaging, this engine sits low in the chassis for optimal balance. It's got some muscle, too, with manual-transmission cars featuring an optimized power curve, 205 horsepower²² and 156 lb.-ft. of torque. In the automatic-equipped 86, this engine pumps out 200 horsepower and 151 lb.-ft. of torque.



VSC¹⁴ FULL-OFF MODE

Designed for track days, 86's unique Vehicle Stability Control (VSC) sport tuning allows the driver to shut off all stability assists. When on a racetrack, this Full-Off Mode prevents the VSC from kicking in, putting the driver in full control.



HILL START ASSIST CONTROL¹⁷

Every 86 comes standard with Hill Start Assist Control (HAC). This convenient technology helps to keep the vehicle from rolling backward when switching from brake to accelerator on an incline.

EXTERIOR DESIGN



86 GT shown in Neptune.

Form inspired by function.

Long hood. Short rear deck. The standard in sports car design. With a heritage directly linked to iconic Toyotas like the 2000GT, the 2019 86 brings a stylish new twist to this timeless profile. Its sculpted shape has been expertly crafted to help give this ride a wind-cheating drag coefficient of just .29 Cd. The front chin spoiler and integrated canards help keep the front end firmly planted to the ground for sharpened turn-in and response. Available on 86 GT, LED fog lights seamlessly integrate into the refreshed front bumper for even more light. And with the functional rear diffuser, 86 shows off its performance pedigree from every angle.



LED LIGHTING

LED lighting front and rear amplifies the cutting-edge style of 86. Up front, the headlights feature LED Daytime Running Lights (DRL) — a unique light strip that gives 86 a bold, signature look. And in the rear, LED lighting helps take the taillights to a whole new level of cool.



FENDER TRIM

Vortex generators on the fenders help control turbulent airflow, enhancing the stability of 86. These also work to keep the front end planted firmly to the ground, so you can stay connected to the road.



CHROME-TIPPED DUAL EXHAUST

When you got it, flaunt it. 86 shows off its performance cred with a chrome-tipped dual exhaust. This cat-back exhaust system is constructed from high-grade stainless steel and features mandrel bends for smoother airflow, helping optimize performance.

86 TRD SPECIAL EDITION



86 TRD Special Edition shown in Raven.

Pushing the envelope of performance.

With a host of performance upgrades specified by the engineers at Toyota Racing Development, the all-new TRD Special Edition creates an intuitive connection between machine and driver. Featuring top-shelf brake and suspension upgrades, a high-performance dual exhaust and more, these components are designed to work in harmony with one another to help the 86 perform on the track while turning heads on the streets.



TRACK-DAY HANDLING

The TRD Special Edition's race-inspired Brembo^{®2} brakes and upgraded sport suspension add a noticeable performance edge. 4-piston front/2-piston rear brake calipers in bright red, coupled with large 12.8-in. front and 12.4-in. rear rotors provide exceptional stopping power, while SACHS^{®3} performance dampers deliver pavement-gripping performance without adding excess weight.



TRD PERFORMANCE EXHAUST

This dual cat-back performance exhaust system features a wide-diameter, double-walled exhaust tip, and is constructed of 304 stainless steel to deliver a more resounding engine note. A polished, slant-cut tip with rolled edge and stamped TRD logo delivers a look that's as aggressive as it sounds.



SINISTER STYLE

Outside, Raven Black paint with TRD decals, a pronounced aerodynamic lower body kit, and special 18-in. machined alloy wheels give the 86 TRD Special Edition a menacing look. Step inside, and you'll find equally aggressive red interior accents, including red seatbelts, red trim details and red stitching.

SPORTY INTERIOR



86 interior shown in Black fabric with Granlux^{®7} trim.

See numbered footnotes in Disclosures section.

Where driver and car become one.

Go ahead: Take the long way. The cabin of 86 brings plenty of comfort to every journey. Granlux^{®7} trim wraps accents on the dashboard, door panels and upper-seat bolsters to bring a sense of sophistication. Aluminum sport pedals and sport gauges with a large center tach further drive home 86's commitment to performance. Standard tech includes *Bluetooth*^{®12} connectivity, an auto-dimming rearview mirror with integrated backup camera,⁴ and a large 7-in. touch-screen display. It all makes for a cabin that better connects you to your drive.



STEERING WHEEL WITH AUDIO CONTROLS

The ergonomic, leather-wrapped steering wheel feels great in your hands and, with its smaller diameter and quick-ratio steering, feels amazing in the corners. Integrated audio controls give you easier access to your music, so you can stay in control of it all.



SPORT SEATS WITH SILVER CONTRAST STITCHING

Deeply bolstered front seats help hold you in place when the roads get twisty. Granlux^{®7} trim on the upper-seat bolsters provides extra grip and an added sense of comfort and luxury. And stunning, silver contrast accent stitching further enhances the premium feel.



FOLDING REAR SEAT

Folding down the rear seat opens up a large total cargo area,²⁴ helping you carry an extra set of wheels and tires for those race-day excursions.

Peace of mind for the road ahead.

86 is equipped with lots of standard safety technologies. A standard auto-dimming rearview mirror with integrated backup camera⁴ helps you see what's behind you while backing up. The standard Star Safety System™ brings Vehicle Stability Control (VSC),¹⁴ Traction Control (TRAC), Anti-lock Brake System (ABS), Electronic Brake-force Distribution (EBD), Brake Assist (BA)¹⁵ and Smart Stop Technology® (SST).¹⁶ And six standard airbags¹⁸ include a driver and front passenger Advanced Airbag System, driver and front passenger seat-mounted side airbags, and front and rear side curtain airbags.



86 GT shown in Neptune.

See numbered footnotes in Disclosures section.



86

Powertrain

- 2.0L 4-Cylinder Horizontally Opposed Engine
- 205 hp @ 7000 rpm; 156 lb.-ft. of torque @ 6400 rpm (manual)
- 200 hp @ 7000 rpm; 151 lb.-ft. of torque @ 6400 rpm (automatic)
- 6-speed close-ratio manual transmission
- 6-speed Electronically Controlled automatic Transmission with intelligence (ECT-i)
- Torsen^{®23} limited-slip differential

Exterior Features

- LED projector-beam headlights, Daytime Running Lights (DRL) and rear combination lights with all-LED lighting
- Chrome-tipped dual exhaust
- Front fender-mounted vortex generators
- 17-in. twisted spoke alloy wheels

Interior Features

- Sport front bucket seats with Granlux^{®7} suede-like material
- Analog tachometer with programmable rev indicator
- Auto-dimming rearview mirror with integrated backup camera display⁴
- Display Audio with 7-in. touch-screen display
- Leather-trimmed tilt/telescopic steering wheel

Options

- All-season tires
- Display Audio with Navigation²⁷



86 GT

Adds to or replaces features offered on 86

Powertrain

- 2.0L 4-Cylinder Horizontally Opposed Engine
- 205 hp @ 7000 rpm; 156 lb.-ft. of torque @ 6400 rpm (manual)
- 200 hp @ 7000 rpm; 151 lb.-ft. of torque @ 6400 rpm (automatic)
- 6-speed close-ratio manual transmission
- 6-speed Electronically Controlled automatic Transmission with intelligence (ECT-i)
- Torsen^{®23} limited-slip differential

Exterior Features

- LED fog lights
- Color-keyed, heated power outside mirrors
- Rear wing in matte black with aerodynamic end plates
- Aerodynamic underbody panel

Interior Features

- Heated sport front bucket seats with leather and Granlux^{®7} suede-like inserts
- 4.2-in. TFT Multi-Information Display (MID) with vehicle performance information
- Smart Key System⁵ with Push Button Start
- Dual zone automatic climate control
- Leather-trimmed tilt/telescopic steering wheel with MID controls

Options

- All-season tires
- Display Audio with Navigation²⁷
- Red and black Granlux^{®7} with leather trim



86 TRD Special Edition

Adds to or replaces features offered on 86 GT

Powertrain

- 2.0L 4-Cylinder Horizontally Opposed Engine
- 205 hp @ 7000 rpm; 156 lb.-ft. of torque @ 6400 rpm (manual)
- 6-speed close-ratio manual transmission
- Torsen^{®23} limited-slip differential

Exterior Features

- 18-in. split-spoke alloy wheels
- Color-keyed rear spoiler
- TRD front, rear and side underbody spoilers
- TRD tricolor side body graphic
- TRD performance exhaust
- Brembo^{®2} brakes and SACHS^{®3} performance dampers

Interior Features

- Red and black sport front bucket seats with side bolsters
- Red and black leather-trimmed tilt/telescopic steering wheel with red contrast stitching
- Parking brake and leather cover with red contrast stitching
- Leather gearshift boot with red contrast stitching
- Stitched "TRD" logo embroidered on passenger side

Options

- Display Audio with Navigation²⁷

Color



Raven



Oceanic



Neptune



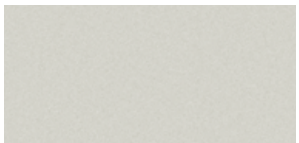
Ablaze



Asphalt

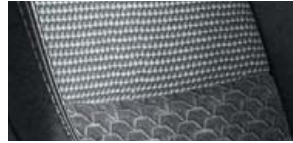


Steel



Halo²⁶

Trim



Black fabric with Granlux^{®7} trim



Black Granlux^{®7} with leather trim
(Also available in red and black Granlux^{®7} with leather trim)

Wheels



17-in. twisted spoke alloy wheel

ACCESSORIES

A wide range of Genuine Toyota Accessories is available to help make driving your 86 even more fun. Now your 86 can reflect your personal style. There's something for everyone. Some accessories may not be available in all regions of the country. For a complete list of accessories, go to toyota.com/86.

Alloy wheel locks
All-weather floor mats⁸
Cargo tote²⁴
Carpet trunk mat
Coin holder/ashtray cup
Display Audio with Navigation²⁷

Emergency assistance kit
First aid kit
LED fog lights
Mudguards
Paint protection film²⁸
Rear bumper appliqué

Rear spoiler
TRD 17-in. forged wheel
TRD 18-in. alloy wheel
TRD brake pads
TRD lowering springs
TRD performance air filter

TRD performance cold air intake
TRD performance dual exhaust
TRD quickshifter
TRD sway bar kit
Universal tablet holder²⁹



LED fog lights



TRD quickshifter



Mudguards



Display Audio with Navigation²⁷



TRD 18-in. alloy wheel



TRD performance dual exhaust



All-weather floor mats⁸



TRD lowering springs

WARRANTIES

Every Toyota Car, Truck and SUV is built to exceptional standards. And that's not idle boasting. We back it up with these Limited Warranty Coverages:

Basic: 36 months/36,000 miles (all components other than normal wear and maintenance items).

Powertrain: 60 months/60,000 miles (engine, transmission/transaxle, drive system, seatbelts and airbags).

Rust-Through: 60 months/unlimited miles (corrosion perforation of sheet metal).

Emissions: Coverages vary under Federal and California regulations. Refer to applicable *Warranty and Maintenance Guide* for details.

Accessories: For Genuine Toyota Accessories purchased at the time of the new vehicle purchase, the Toyota Accessory Warranty coverage is in effect for 36 months/36,000 miles from the vehicle's in-service date, which is the same coverage as the Toyota New Vehicle Limited Warranty.

For Genuine Toyota Accessories purchased after the new vehicle purchase the coverage is 12 months, regardless of mileage, from the date the accessory was installed on the vehicle, or the remainder of any applicable new vehicle warranty, whichever provides greater coverage.

You may be eligible for transportation assistance if it's necessary that your vehicle be kept overnight for repairs covered under warranty. Please see your authorized Toyota dealership for further details.

For complete details about Toyota's warranties, please visit www.toyota.com, refer to the applicable *Warranty and Maintenance Guide* or see your Toyota dealer.


FEATURES¹

	86	86 GT	86 TRD Special Edition		86	86 GT	86 TRD Special Edition
EXTERIOR							
17-in. twisted spoke alloy wheels	S	S	—	Variable intermittent windshield wipers	S	S	S
18-in. split-spoke alloy wheels	—	—	S	"86" front fender badge	S	S	S
Rear wing in matte black with aerodynamic end plates	—	S	—	Rear window defogger	S	S	S
Color-keyed rear spoiler	—	—	S	Dual chrome-tipped exhaust	S	S	—
TRD front, rear and side underbody spoilers	—	—	S	TRD performance exhaust	—	—	S
LED projector low- and high-beam headlights with auto on/off feature, and turn signal indicators with embossed "86" lens	S	S	S	Front fender-mounted vortex generators	S	S	S
LED Daytime Running Lights (DRL)	S	S	S	Rear bumper with aerodynamic lower diffuser	S	S	S
LED fog lights	—	S	S	Aerodynamic underbody panel	—	S	S
LED rear combination lights (brake and turn signal indicators)	S	S	S	TRD tricolor side body graphic	—	—	S
Color-keyed power outside mirrors	S	—	—	Brembo ^{®2} brakes and SACHS ^{®3} performance dampers	—	—	S
Color-keyed, heated power outside mirrors	—	S	S				
INTERIOR							
Auto-dimming rearview mirror with integrated backup camera ⁴ display	S	S	S	Parking brake and leather cover with silver contrast stitching	—	S	—
Air conditioning with filter	S	—	—	Parking brake and leather cover with red contrast stitching	—	—	S
Dual zone automatic climate control (individual temperature settings for the driver and front passenger) with interior filter	—	S	S	Cruise control	S	S	S
Power windows with driver and front passenger auto up/down and jam protection	S	S	S	Sport front bucket seats with black shoulder pads	S	—	—
Power door locks	S	S	S	Heated two-stage sport front seats with leather bolsters and Granlux ^{®7} suede-like inserts with silver contrast stitching	—	S	—
Multi-function in-key remote keyless entry system with lock, unlock, panic and trunk-release functions	S	—	—	Red and black sport front bucket seats with side bolsters	—	—	S
Smart Key System ⁵ on driver and passenger doors with Push Button Start, remote keyless entry system with lock, two-stage unlock, panic and trunk release functions	—	S	S	Height-adjustable driver's seat	S	S	S
Anti-theft system with engine immobilizer ⁶	S	—	—	Knee support cushions for spirited driving	S	—	—
Anti-theft system with alarm and engine immobilizer ⁶	—	S	S	Leather-like knee support cushions for spirited driving	—	S	S
Multi-Information Display (MID)	S	—	—	Granlux ^{®7} suede-like material accents on door panels, armrest and instrument panel surround, including an "86" logo embroidered on passenger-side instrument panel fascia	S	—	—
4.2-in. TFT Multi-Information Display (MID) with "86" logo on start-up and the following vehicle data: odometer, twin tripmeters, outside ambient temperature, engine coolant/oil temperatures, voltmeter, average trip speed, driving time and miles covered, stopwatch/lap timer, current/average fuel consumption, rpm and hp/torque curves, instantaneous and historical G-force friction circle with digital readout	—	S	S	Granlux ^{®7} suede-like material accents on door panels, armrest and instrument panel surround	—	S	S
Digital clock	S	S	S	Granlux ^{®7} suede-like material covering the top of the instrument cluster hood, silver contrast stitching throughout the interior, and stitched "86" logo on passenger-side instrument panel fascia	—	S	—
Digital speedometer	S	S	S	Granlux ^{®7} suede-like material covering the top of the instrument cluster hood, red contrast stitching throughout the interior, and stitched "TRD" logo embroidered on passenger-side instrument panel fascia	—	—	S
Dual analog and digital speedometer	S	S	S	Red seatbelts	—	—	S
Analog tachometer with programmable rev indicator, visual and audible	S	S	S	Leather gearshift boot with silver contrast stitching	—	S	—
Tripmeter	S	S	S	Leather gearshift boot with red contrast stitching	—	—	S
Leather-trimmed tilt/telescopic steering wheel with silver contrast stitching, "86" center cap logo, and audio controls (manual transmission)	S	—	—	One-piece folding rear seatback	S	S	S
Leather-trimmed tilt/telescopic steering wheel with silver contrast stitching, "86" center cap logo, audio controls and paddle shifters (automatic transmission)	S	—	—	Dual sun visors with vanity mirrors	S	S	S
Leather-trimmed tilt/telescopic steering wheel with silver contrast stitching, "86" center cap logo, audio and MID controls (manual transmission)	—	S	—	Four-piece carpeted floor mats ⁸	S	S	S
Leather-trimmed tilt/telescopic steering wheel with silver contrast stitching, "86" center cap logo, audio and MID controls, and paddle shifters (automatic transmission)	—	S	—	Center console with 12V outlet, sliding dual cup holder and storage area	S	S	S
Red and black leather-trimmed tilt/telescopic steering wheel with red contrast stitching, "86" center cap logo, audio and MID controls	—	—	S	Display Audio — 7-in. touch-screen display, AM/FM player, Aha Radio ^{™9} app ⁹ with over 100,000 stations, eight speakers, auxiliary audio jack, USB 2.0 port ¹⁰ with iPod ^{®11} connectivity and control, voice recognition with voice training, hands-free phone capability, phone book access (2500 phone book contacts) and music streaming ¹² via Bluetooth ^{®12} wireless technology, HD Radio ^{™13} Technology, Gracenote [®] album cover art, steering wheel audio controls	S	S	S
				Roof-mounted color-keyed shark-fin AM/FM antenna	S	S	S

See numbered footnotes in Disclosures section.

S = Standard — = Not Available

FEATURES¹ (continued)

	86	86 GT	86 TRD Special Edition		86	86 GT	86 TRD Special Edition
SAFETY AND CONVENIENCE							
 Star Safety System™ — includes Vehicle Stability Control (VSC) ¹⁴ , Traction Control (TRAC), Anti-lock Brake System (ABS), Electronic Brake-force Distribution (EBD), Brake Assist (BA) ¹⁵ and Smart Stop Technology® (SST) ¹⁶	S	S	S	Three-point seatbelts for all seating positions; driver-side Emergency Locking Retractor (ELR) and Automatic/Emergency Locking Retractor (ALR/ELR) on all passenger belts	S	S	S
Vehicle Stability Control (VSC) ¹⁴ Track Mode	S	S	S	LATCH (Lower Anchors and Tethers for Children) includes lower anchors on outboard rear seats and tether anchors on all rear seats	S	S	S
Hill Start Assist Control (HAC) ¹⁷	S	S	S	Tire Pressure Monitor System (TPMS) ¹⁹	S	S	S
Six airbags ¹⁸ — includes driver and front passenger Advanced Airbag System, driver and front passenger outboard seat-mounted side airbags, and front and rear side curtain airbags	S	S	S	ToyotaCare ²⁰ featuring a no cost maintenance plan with roadside assistance ²¹	S	S	S

S = Standard — = Not Available

SPECIFICATIONS

	86	86 GT	86 TRD Special Edition
MECHANICAL/PERFORMANCE			
ENGINE			
2.0-Liter 4-Cylinder Horizontally Opposed Engine with DOHC 16-Valve Cylinder Heads and Dual Variable Valve Timing; 205 hp @ 7000 rpm (manual transmission) (SAE Net); 156 lb.-ft. of torque @ 6400-6600 rpm	Standard	Standard	Standard
2.0-Liter 4-Cylinder Horizontally Opposed Engine with DOHC 16-Valve Cylinder Heads and Dual Variable Valve Timing; 200 hp @ 7000 rpm (automatic transmission) (SAE Net); 151 lb.-ft. of torque @ 6400-6600 rpm	Standard	Standard	Not available
Direct Ignition System	Standard	Standard	Standard
Bore x stroke, mm. (in.)	86.0 x 86.0 (3.39 x 3.39)	86.0 x 86.0 (3.39 x 3.39)	86.0 x 86.0 (3.39 x 3.39)
Compression ratio	12.5 : 1	12.5 : 1	12.5 : 1
Fuel octane rating ²²	Premium unleaded fuel recommended	Premium unleaded fuel recommended	Premium unleaded fuel recommended
Engine oil type, grade, weight	Toyota Genuine Motor Oil, SAE 0W-20, ILSAC GF-5 engine oil	Toyota Genuine Motor Oil, SAE 0W-20, ILSAC GF-5 engine oil	Toyota Genuine Motor Oil, SAE 0W-20, ILSAC GF-5 engine oil
Engine oil capacity	5.7 US qt.	5.7 US qt.	5.7 US qt.
TRANSMISSION			
6-speed close-ratio manual transmission	Standard	Standard	Standard
Short-throw 6-speed close-ratio manual transmission with triple-cone syncromesh on 1st/2nd/3rd gears, ball-bearing mounted shift linkage, and Reverse gear lockout protection	Standard	Standard	Standard
6-speed Electronically Controlled automatic Transmission with intelligence (ECT-i)	Standard	Standard	Not available
6-speed Electronically Controlled automatic Transmission with intelligence (ECT-i), sequential shift mode with Dynamic Rev Management and paddle shifters, Vehicle Stability Control ¹⁴ Track Mode, Sport Mode, Snow Mode, and an automatic transmission fluid heat exchanger	Standard	Standard	Not available
FUEL INJECTION SYSTEM			
Toyota D-4S Dual Injection System (Direct and Sequential Port Injection)	Standard	Standard	Standard
DRIVETRAIN			
Front engine, Rear-Wheel Drive (RWD)	Standard	Standard	Standard
Torsen ^{®23} limited-slip differential (LSD)	Standard	Standard	Standard
BODY CONSTRUCTION			
Reinforced unibody construction with lightweight, low center of gravity design	Standard	Standard	Standard
Coefficient of drag (Cd)	0.29	0.27	—
SUSPENSION			
Sport-tuned independent MacPherson strut front suspension, independent multi-link rear suspension	Standard	Standard	Standard
Solid front and rear stabilizer bars	Standard	Standard	Standard
Stabilizer bar diameter, front/rear (mm.)	18.0/15.0	18.0/15.0	18.0/15.0

See numbered footnotes in Disclosures section.

SPECIFICATIONS (continued)

	86	86 GT	86 TRD Special Edition
STEERING			
Sport-calibrated Electric Power Steering (EPS); power-assisted rack-and-pinion	Standard	Standard	Standard
Steering wheel turns (lock-to-lock)	2.48	2.48	2.48
Turning diameter — curb to curb (ft.)	36.1	36.1	36.1
BRAKES			
Power-assisted ventilated 11.58-in. front disc brakes; ventilated 11.42-in. rear disc brakes	Standard	Standard	Not available
Power-assisted ventilated 12.83-in. front disc brakes; ventilated 12.44-in. rear disc brakes	Not available	Not available	Standard
Front rotor size, diameter x thickness, mm. (in.)	294.0 x 24.0 (11.58 x 0.95)	294.0 x 24.0 (11.58 x 0.95)	326.0 x 30.0 (12.83 x 1.18)
Rear rotor size, diameter x thickness, mm. (in.)	290.0 x 18.0 (11.42 x 0.71)	290.0 x 18.0 (11.42 x 0.71)	316.0 x 20.0 (12.44 x 0.79)
DIMENSIONS			
EXTERIOR			
Length (in.)	166.7	166.7	168.8
Width (in.)	69.9	69.9	69.9
Height (in.)	50.6	50.6	50.6
Ground clearance (in.)	4.9	4.9	4.9
Wheelbase (in.)	101.2	101.2	101.2
Tread (front/rear) (in.)	59.8/60.6	59.8/60.6	59.8/60.6
Wheel diameter x width, bolt pattern, inset	17 x 7 in. alloys, 5 x 100 mm. bolt pattern, + 48 mm. inset	17 x 7 in. alloys, 5 x 100 mm. bolt pattern, + 48 mm. inset	18 x 7.5 in. alloys, 5 x 100 mm. bolt pattern, + 48 mm. inset
INTERIOR			
Head room — front/rear (in.)	37.1/35.0	37.1/35.0	37.1/35.0
Shoulder room — front/rear (in.)	54.5/51.7	54.5/51.7	54.5/51.7
Leg room — front/rear (in.)	41.9/29.9	41.9/29.9	41.9/29.9
Hip room — front/rear (in.)	53.1/45.3	53.1/45.3	53.1/45.3
WEIGHTS AND CAPACITIES			
Power to weight ratio (curb weight lb./hp)	13.5	13.5	13.8
Curb weight (lb.)	2776	2776	2837
Gross Vehicle Weight Rating GVWR (lb.)	3682	3682	3695
Seating capacity	4	4	4
Passenger volume (cu. ft.)	76.5	76.5	76.5
Cargo volume (rear seats up) (cu. ft.) ²⁴	6.9	6.9	6.9
Fuel capacity (gal.)	13.2	13.2	13.2
Transmission fluid type, weight (capacity)	Toyota Genuine Gear Oil, SAE 75W-90, API GL-3 (2.3 US qt.)	Toyota Genuine Gear Oil, SAE 75W-90, API GL-3 (2.3 US qt.)	Toyota Genuine Gear Oil, SAE 75W-90, API GL-3 (2.3 US qt.)
Differential fluid type, weight (capacity)	Toyota Genuine Differential Gear Oil LX, SAE 75W-85, API GL-5 (1.22 US qt.)	Toyota Genuine Differential Gear Oil LX, SAE 75W-85, API GL-5 (1.22 US qt.)	Toyota Genuine Differential Gear Oil LX, SAE 75W-85, API GL-5 (1.22 US qt.)
TIRES			
Type	215/45R17 87W	215/45R17 87W	215/40R18 85Y
Spare	Temporary	Temporary	Temporary
MILEAGE ESTIMATES (mpg city/highway/combined)²⁵			
Manual transmission	21/28/24	21/28/24	21/28/24
Automatic transmission	24/32/27	24/32/27	—

See numbered footnotes in Disclosures section.

CARS BUILT FOR THE WAY YOU LIVE

At Toyota, we build cars for how you live. From building advanced safety features designed to help prevent crashes to driving cross-country to understand how we can make your driving experience better, our work starts with understanding your needs. Building cars for how you live also means thinking about tomorrow — from fuel efficiency and environmental innovations, to things beyond cars, like a bicycle that you can control with your mind. And because what we learn building cars can help improve lives in other places, we do things like help communities rebuild their homes quickly after a disaster and work with soup kitchens to help them serve more people faster. Toyota. Built for how you live. Together we are going places.

DISCLOSURES

1. Toyota strives to build vehicles to match customer interest and thus they typically are built with popular options and option packages. Not all options/packages are available separately and some may not be available in all regions of the country. If you would prefer a vehicle with no or different options, contact your dealer to check for current availability or the possibility of placing a special order. 2. Brembo® is a registered trademark of Freni Brembo S. P. A. 3. SACHS® is a registered trademark of ZF Friedrichshafen AG. 4. The backup camera does not provide a comprehensive view of the rear area of the vehicle. You should also look around outside your vehicle and use your mirrors to confirm rearward clearance. Environmental conditions may limit effectiveness and view may become obscured. See *Owner's Manual* for additional limitations and details. 5. The Smart Key System may interfere with some pacemakers or cardiac defibrillators. If you have one of these medical devices, please talk to your doctor to see if you should deactivate this system. 6. The engine immobilizer is a state-of-the-art anti-theft system. When you insert your key into the ignition switch or bring a Smart Key fob into the vehicle, the key transmits an electronic code to the vehicle. The engine will only start if the code in the transponder chip inside the key/fob matches the code in the vehicle's immobilizer. Because the transponder chip is embedded in the key/fob, it can be costly to replace. If you lose a key or fob, your Toyota dealer can help. Alternatively, you can find a qualified independent locksmith to perform high-security key services by consulting your local Yellow Pages or by contacting www.aloa.org. 7. Granlux® is a registered trademark of Oy Granula Ab Ltd. 8. This floor mat/floor liner was designed specifically for use in your model and model year vehicle and SHOULD NOT be used in any other vehicle. To avoid potential interference with pedal operation, each mat/liner must be secured with its fasteners. Do not install a floor mat/floor liner on top of an existing floor mat/floor liner. 9. Aha Radio™ is a trademark of Harman International Industries Inc. Apps, prices and services vary by phone carrier and are subject to change at any time without notice. Subject to smartphone connectivity and capability. Data charges may apply. 10. May not be compatible with all mobile phones, MP3/WMA players and like models. 11. iPod® and iPhone® are registered trademarks of Apple Inc. All rights reserved. 12. The Bluetooth® word mark and logos are registered trademarks owned by Bluetooth SIG, Inc., and any use of such marks by Toyota is under license. A compatible Bluetooth®-enabled phone must first be paired. Phone performance depends on software, coverage and carrier. 13. HD Radio™ Technology manufactured under license from iBiquity Digital Corporation U.S. and Foreign Patents. HD Radio™ and the HD, HD Radio, and "Arc" logos are proprietary trademarks of iBiquity Digital Corp. 14. Vehicle Stability Control is an electronic system designed to help the driver maintain vehicle control under adverse conditions. It is not a substitute for safe and attentive driving practices. Factors including speed, road conditions, weather and driver steering input can all affect whether VSC will be effective in preventing a loss of control. See *Owner's Manual* for additional limitations and details. 15. Brake Assist is designed to help the driver take full advantage of the benefits of ABS. It is not a substitute for safe driving practices. Braking effectiveness also depends on proper vehicle maintenance, and tire and road conditions. See *Owner's Manual* for additional limitations and details. 16. Smart Stop Technology® operates only in the event of certain contemporaneous brake and accelerator pedal applications. When engaged, the system will reduce power to help the brakes bring the vehicle to a stop. Factors including speed, road conditions and driver input can all impact stopping distance. Smart Stop Technology® is not a substitute for safe and attentive driving and does not guarantee instant stopping. See *Owner's Manual* for additional limitations and details. 17. Hill Start Assist Control is designed to help minimize backward rolling on steep ascents. It is not a substitute for safe driving judgment and practices. Factors including speed, grade, surface conditions and driver input can all affect whether HAC will be effective in preventing a loss of control. See *Owner's Manual* for additional limitations and details. 18. All the airbag systems are Supplemental Restraint Systems. All airbags (if installed) are designed to inflate only under certain conditions and in certain types of severe collisions. To decrease the risk of injury from an inflating airbag, always wear seatbelts and sit upright in the middle of the seat as far back as possible. Do not put objects in front of an airbag or around the seatback. Do not use a rearward-facing child seat in any front passenger seat. See *Owner's Manual* for additional limitations and details. 19. The Tire Pressure Monitor System alerts the driver when tire pressure is critically low. For optimal tire wear and performance, tire pressure should be checked regularly with a gauge; do not rely solely on the monitor system. See *Owner's Manual* for details. 20. ToyotaCare plan covers normal factory scheduled service for 2 years or 25K miles, whichever comes first. See Toyota dealer for details and exclusions. Valid only in the continental U.S. and Alaska. 21. Roadside Assistance coverage is 2 years unlimited mileage. Does not include parts and fluids, except emergency fuel delivery. See Toyota Dealer for details and exclusions. Valid only in the continental U.S. and Alaska. 22. Ratings achieved using the required premium unleaded gasoline with an octane rating of 93 or higher. If premium fuel is not used, performance will decrease. If unleaded gasoline with an octane rating of 93 (98 RON) is not available, unleaded gasoline with an octane rating of 91 (95 RON) may be used with no detriment to engine durability or drivability. 23. Torsen® is a registered trademark of Zexel Torsen, Inc. 24. Cargo and load capacity limited by weight and distribution. 25. 2019 preliminary estimates determined by Toyota. EPA estimates not available at time of posting. Actual mileage will vary. 26. Extra-cost color. 27. Availability and accuracy of the information provided by the navigation system is dependent upon many factors. Use common sense when relying on information provided. Services and programming subject to change. Services not available in every city or roadway. Updates may be available from your dealer at an additional cost. See *Owner's Manual* for details. 28. The Toyota Genuine Accessory Warranty will only apply when the installation is performed by a trained Toyota-approved installer. Please see dealer for details. 29. The universal tablet holder is intended for passengers only. Drivers should always be sure to obey traffic regulations and maintain awareness of the road and traffic conditions at all times. Use of aftermarket accessories may pose an increased risk of injury to occupants in the event of an accident. Tablet sold separately.

Toyota strives to build vehicles to match customer interest and thus they typically are built with popular options and option packages. Not all options/packages are available separately and some may not be available in all regions of the country. See toyota.com for information about options/packages commonly available in your area. If you would prefer a vehicle without any or with different options, contact your dealer to check for current availability or the possibility of placing a special order.

Some vehicles are shown with available equipment. Seatbelts should be worn at all times. For details on vehicle specifications, standard features and available equipment in your area, contact your Toyota dealer. A vehicle with particular equipment may not be available at the dealership. Ask your Toyota dealer to help locate a specifically equipped vehicle.

All information presented herein is based on data available at the time of posting, is subject to change without notice and pertains specifically to mainland U.S.A. vehicles only. Prototypes shown. Actual production vehicles will vary.



For Toyota Mobility program details, go to www.toyota.com/mobility or call the Toyota Customer Assistance Center at 1-800-331-4331

