

2018 RAV4



 **Let's
Go
Places**



Adventure AWD shown in Ruby Flare Pearl,^{1,2} **XLE AWD** shown in Magnetic Gray Metallic with available Extra Value "Plus" Package and **Limited AWD** shown in Blizzard Pearl.^{1,2} Available roof rack cross bars shown.

See numbered footnotes in Disclosures section.

Explore everything. Including your limits.

It's time to get off the beaten path and discover more good times with the new RAV4 Adventure grade. Hearty 18-in. 5-spoke Black alloy wheels, larger overfender flares and pronounced rocker panel guards all come standard on the Adventure grade, ready to help you take on any trip. When it's time to get away, integrated black roof rails help you bring your gear along for the ride. No matter where you want to go, RAV4 Adventure grade's unique badging, black-accented power heated outside mirrors and halogen projector-beam headlights with black bezels will get you there in style.



"Let's create our own adventure
and explore the road less traveled."



ADVENTURE GRADE INTERIOR

Roughing it never felt so good.

Smooth out the rough edges when you're roughing it. Take hold of the supple available heated steering wheel and Adventure grade shift lever, and treat yourself to a premium experience. You'll enjoy every getaway with available power-adjustable driver's and front passenger seats featuring durable fabric trim and supportive sport bolsters. Thoughtful touches like metallic Adventure-badged doorsill protectors will announce your adventurous intentions, while unique accents add the perfect dash of style to your next escape.

UNIQUE INTERIOR COMPONENTS

Go beyond the boundaries. Break free from the conventional road trip, but leave your sense of style intact with RAV4 Adventure grade's distinctive interior accent pieces. Thanks to the heavy-duty all-weather floor liners and cargo mats,²⁵ you can bring some of the great outdoors inside without worry.



AVAILABLE 120V/100W POWER OUTLET

Be your own grid with RAV4 Adventure grade's 120V/100W power outlet. Conveniently located in the rear cargo area,⁴⁵ this high-voltage hookup will power up your gear so you can keep the fun fully charged no matter how far your adventure takes you.



See numbered footnotes in Disclosures section.

ADVENTURE GRADE FEATURES



XLE AWD shown in Magnetic Gray Metallic with available Extra Value "Plus" Package and **Adventure AWD** shown in Ruby Flare Pearl⁴³ with available towing hitch receiver.⁴⁶ Available roof rack cross bars shown.

See numbered footnotes in Disclosures section.



Adventure AWD shown in Ruby Flare Pearl⁴³ with available towing hitch receiver^{46,48} and **XLE AWD** shown in Magnetic Gray Metallic with available Extra Value "Plus" Package. Available roof rack cross bars shown. Vehicle shown with some accessories not available from Toyota.

Do not overload your vehicle. See *Owner's Manual* for weight limits and restrictions. See numbered footnotes in Disclosures section.

Hitch it up and take it with you.

Bring more of what matters along for the ride. Thanks to RAV4 Adventure grade's unique Tow Prep Package, you can tow up to 3500 lbs.⁴⁶ With the upgraded radiator, supplemental engine oil cooler and transmission fluid cooler, you can tackle the longest hauls with ease. Go ahead, hitch it up: RAV4 Adventure grade can take it.

COLD AREA PACKAGE

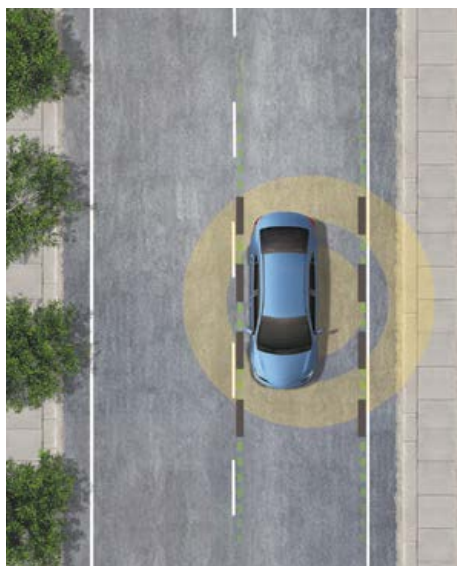
Cool temps won't put the big chill on your next trip. RAV4 Adventure grade's available Cold Area Package includes 8-way power-adjustable driver's seat, heated/power fabric front-row seats, heated leather-wrapped steering wheel and wiper de-icer to keep the heat turned up. It won't leave you in the cold during those chilly winter months.





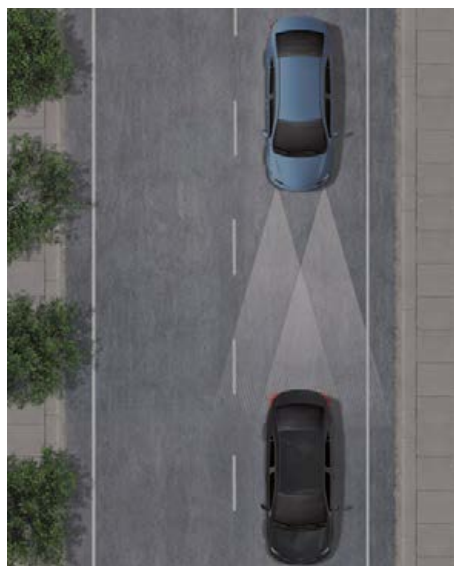
Features designed for your safety.

The road can be unpredictable. That's why RAV4 is equipped with eight standard airbags,⁴⁰ and integrated features like the Star Safety System™ and standard Toyota Safety Sense™ P (TSS-P).²⁷ This package of safety features combines Pre-Collision System²⁸ with Pedestrian Detection²⁹ (PCS w/PD), Lane Departure Alert with Steering Assist (LDA w/SA),³⁰ Automatic High Beams (AHB)³¹ and Dynamic Radar Cruise Control (DRCC)³² to assist you. TSS-P's comprehensive features create in-the-moment safety designed to help support your awareness and decision-making on the road.



LANE DEPARTURE ALERT WITH STEERING ASSIST (LDA w/SA)³⁰

Under certain circumstances, Lane Departure Alert (LDA) is designed to detect lane departure on roads with clear markings. LDA only activates when you're traveling at a speed of 32 mph or faster. When you hear and see the alert, after carefully checking the road around you, you should safely direct your vehicle back to the center of your lane. In addition, Toyota vehicles equipped with Toyota Safety Sense™ P (TSS-P)²⁷ and Electronic Power Steering (EPS) include Steering Assist functionality. When it's activated and senses that you're unintentionally drifting, the system may automatically make small corrective steering inputs to help keep your vehicle in its lane.



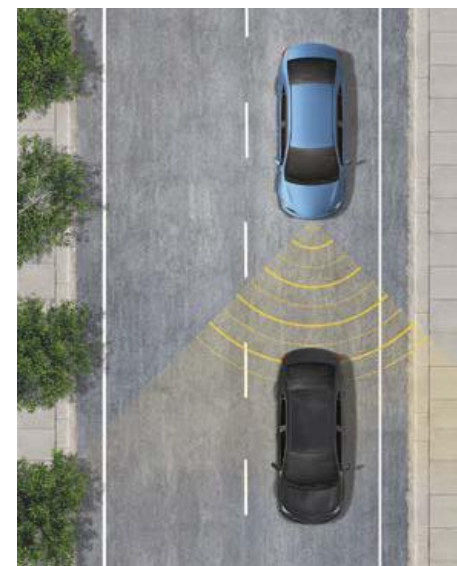
AUTOMATIC HIGH BEAMS (AHB)³¹

Automatic High Beams (AHB) are a safety system designed to help you see more clearly at night — without blinding other drivers. Designed to activate at speeds above 25 mph, AHB rely on an in-vehicle camera to help detect the headlights of oncoming vehicles and taillights of preceding vehicles, then automatically toggle between high and low beams accordingly to provide the appropriate amount of light. By using high beams more frequently, the system may allow earlier detection of pedestrians and obstacles.



PRE-COLLISION SYSTEM²⁸ WITH PEDESTRIAN DETECTION²⁹ (PCS w/PD)

Using an in-vehicle camera and radar to help detect a vehicle or a pedestrian in front of you, the Pre-Collision System with Pedestrian Detection (PCS w/PD) can help you mitigate or avoid a potential collision. If the system determines that a frontal collision is likely, it prompts you to take action using audio and visual alerts. If you notice the potential collision and apply the brakes, PCS w/PD may apply additional force using Brake Assist (BA).³⁴ If you don't brake in time, it may automatically apply the brakes to reduce your speed, helping to minimize the likelihood of a frontal collision or reduce its severity.

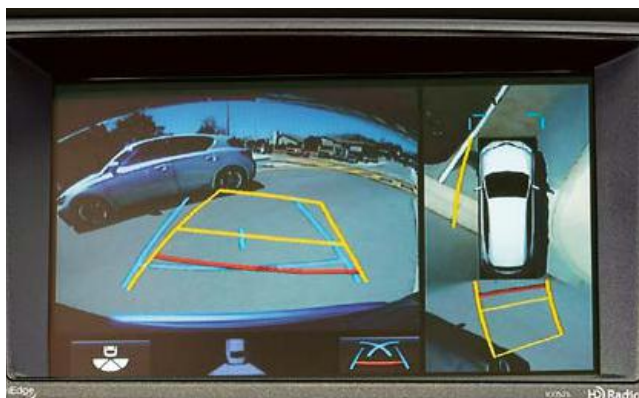


DYNAMIC RADAR CRUISE CONTROL (DRCC)³²

Intended for highways and similar to "constant speed" cruise control, Dynamic Radar Cruise Control (DRCC) lets you drive at a preset speed. DRCC uses vehicle-to-vehicle distance control, which adjusts your speed, to help you maintain a preset distance from vehicles ahead of you that are driving at a slower speed. DRCC uses a front-grille-mounted radar and an in-vehicle camera designed to detect vehicles and their distance. If a driver is traveling slower than you, or within your preset range, DRCC will automatically slow your vehicle down without deactivating cruise control. If DRCC determines you need to slow down more, an audio and visual alert notifies you and brakes are applied. When there's no longer a vehicle driving slower than your set speed in front of you, DRCC will then accelerate and regular cruise control will resume.

A rewarding space where technology meets luxury.

Enjoy every trip, from uphill to downtown, in RAV4's roomy interior. The driver and front passenger enjoy available heated seats and dual zone automatic climate control. Another convenient piece of tech is the available Smart Key System.²⁶ The luxurious leather-trimmed steering wheel delivers a premium touch while the available Entune™ Premium JBL® Audio with Integrated Navigation²² and App Suite⁹ includes 11 JBL® GreenEdge™ speakers to help you stay connected to your tunes and your life. SiriusXM® Satellite Radio¹⁹ with 3-month complimentary SiriusXM All Access trial,²⁰ and available frameless HomeLink®²⁴-capable mirror, further enhance the high-tech experience. Immerse yourself in the refined interior and drive in complete comfort.



BIRD'S EYE VIEW CAMERA⁸ WITH PERIMETER SCAN

RAV4's available Bird's Eye View Camera helps you see nearby objects and get into and out of small spaces with ease. The system includes Perimeter Scan — an innovative feature that displays live, rotating 360-degree views of your surroundings when you're parked.



INTEGRATED NAVIGATION²²

RAV4 offers a selection of Integrated Navigation systems to help guide you on your next adventure. Choose from Entune™ Premium Audio with Integrated Navigation and App Suite,⁹ and Entune™ Premium JBL® Audio with Integrated Navigation and App Suite — featuring JBL® GreenEdge™ speakers. Both offer the convenience and clarity of SiriusXM® Satellite Radio.¹⁹



SOFTEX® DRIVER'S SEAT WITH MEMORY FUNCTION

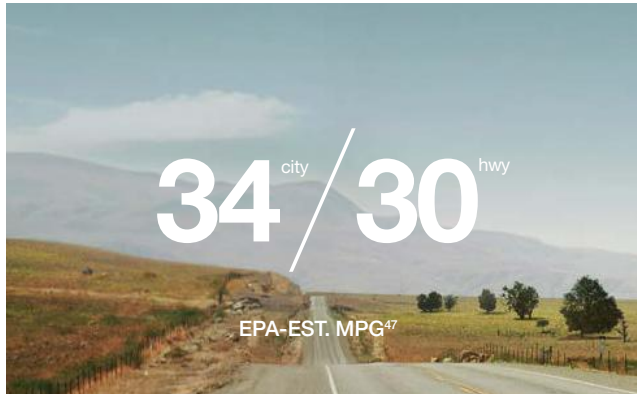
RAV4 helps you customize your comfort. Available multi-stage heated SofTex®-trimmed front seats help tame those chilly nights. And finding the perfect driving position is never an issue, thanks to an available 8-way power-adjustable driver's seat with memory function and power lumbar support.



Limited Hybrid interior shown in Cinnamon with available Entune™ Premium JBL® Audio with Integrated Navigation²² and App Suite.⁹
See numbered footnotes in Disclosures section.

Redefine what a hybrid SUV can do, with more efficiency and excitement.

Let's bring tech, style and efficiency to every adventure. With RAV4 Hybrid's advanced innovations and Toyota's proven hybrid powertrain, you can make the most of any trip. And in addition to great fuel economy, RAV4 Hybrid adds extra oomph with 194 net horsepower and outstanding acceleration. For extra confidence when Mother Nature rains on your parade, the available Electronic On-Demand All-Wheel Drive with intelligence (AWD-i) is designed to help make any trek a sure-footed experience, with an electric motor that delivers instant torque to the rear wheels when you need more traction. It helps you get even more from everything you want to do.



EPA-ESTIMATED 34 MPG^{*7}

RAV4 Hybrid engages a variety of future-forward tech to help make every journey as efficient as possible. You'll enjoy the extra thrills that come from the power and acceleration, and with RAV4 Hybrid's EPA-estimated 34 mpg city,^{*7} your wallet will be happy too.



HYBRID GAUGE CLUSTER

Stay on top of it all. RAV4 Hybrid's unique gauge cluster lets you monitor the Hybrid Synergy Drive[®] system with just a glance. You can quickly track when the system is charging and providing power to the drive wheels, so you can get the most out of every drive.



HYBRID ENERGY MONITOR

RAV4 Hybrid has the tools to help increase the efficiency of your drive. The energy monitor indicates the operation of the gas engine, electric motor generator and hybrid battery. As conditions change, it provides real-time information showing how power is being routed to the drive wheels, or how the battery is being charged.

HYBRID TECHNOLOGY



Limited Hybrid shown in Electric Storm Blue with available Advanced Technology Package.

Expand your horizons and your personal space.

RAV4 makes comfort and convenience a priority. Reduced noise, vibration and harshness help make for a quiet cabin, and the available flexible cargo net system and second-row seats with a reclining, folding 60/40 split let you easily reconfigure the cargo area to meet your needs. With this much space, you can get busy expanding your horizons.



CUP HOLDER

Bring your favorite beverage along for the ride. RAV4 features a convenient cup holder design that can accommodate your favorite travel mugs — handles and all.



HANDS-FREE, FOOT-ACTIVATED POWER LIFTGATE⁶

Loading cargo when your hands are full has never been easier. Available on RAV4, the hands-free, foot-activated power liftgate senses your Smart Key fob²⁶ and opens when you simply wave your foot under the center of the rear bumper. And because it's height-adjustable, the liftgate can be programmed to stop at your desired height every time. Getting ready for the adventure is easier than ever. (Photo for demonstration purposes only. Please see *Owner's Manual* for more details on functionality.)



CARGO AREA

RAV4's generous cargo area lets you take the fun wherever you go. Whether you fold the 60/40 split second-row seats flat or leave them upright, with RAV4's up to 73.4 cubic feet of cargo capacity,⁴⁵ there's always plenty of space in the back. So go ahead: Bring your friends and all their gear. There's no reason to leave any of the fun behind.

PREMIUM INTERIOR



SE interior shown in Black with available cargo net hammock.⁴⁵
See numbered footnotes in Disclosures section.

Raise the bar with a spirited driving experience.

Drive with confidence. RAV4 SE's available All-Wheel Drive features an innovative Dynamic Torque-Control AWD. It helps enhance handling by distributing engine power from front to rear and manages the vehicle's braking system from side to side for optimal control. Sport Mode provides a more exciting drive, with thrilling acceleration and revised shift points from the 6-speed automatic transmission.



SE GAUGE CLUSTER

Sporty touches for an inspiring drive. SE gas models feature performance-inspired styling cues such as eye-catching red needles and red gauge cluster illumination. It all helps you stay informed with just a glance so you can stay focused on the drive ahead.



SE PADDLE SHIFTERS

Paddle shifters let you shift gears without letting go of the wheel. A light touch on either lever gives you rapid gear changes and a more engaging drive. It's one more way SE gas models help keep you in control of the fun.



SUSPENSION

Comfort and control. RAV4's suspension provides a smooth ride on the highway. For those with an athletic soul, RAV4 SE gas models feature a sport-tuned suspension with attractive blue shocks up front to deliver a more spirited drive.

PERFORMANCE



SE AWD shown in Silver Sky Metallic.

STYLING



SE shown in Black with available S-Code Paint Treatment;⁴³ **Limited Hybrid** shown in Electric Storm Blue with available Advanced Technology Package. See numbered footnotes in Disclosures section.



LE

Powertrain

- 2.5L 4-Cylinder Engine
- 6-speed automatic transmission
- 176 hp @ 6000 rpm
- 172 lb.-ft. @ 4100 rpm
- Available Dynamic Torque-Control AWD w/center differential lock

Exterior Features

- Halogen projector-beam headlights with auto on/off feature
- Power outside mirrors with folding feature and blind spot mirrors⁴
- 17-in. wide-vent steel wheels with wheel covers and P225/65R17 tires
- Automatic Limited-Slip Differential (Auto LSD)²

Interior Features

- Backup camera⁷ with projected path static lines
- Entune™ Audio
- Tilt/telescopic urethane steering wheel with audio, Multi-Information Display (MID), advanced voice recognition¹⁴ and *Bluetooth*^{®16} hands-free phone controls
- Fabric-trimmed 6-way adjustable driver's seat with seatback pocket; 4-way adjustable front passenger seat with seatback pocket
- Fabric-trimmed 60/40 split, reclining, fold-flat second-row seat with center armrest

Safety/Convenience — Standard on all RAV4 models

- Toyota Safety Sense™ P (TSS-P)²⁷ includes:
 - Pre-Collision System²⁸ with Pedestrian Detection²⁹ (PCS w/PD)
 - Lane Departure Alert with Steering Assist (LDA w/SA)³⁰
 - Automatic High Beams (AHB)³¹
 - Dynamic Radar Cruise Control (DRCC)³²

Options

- Entune™ Audio Plus with Connected Navigation App¹⁷
- Cargo net hammock
- Cargo area tonneau cover
- Roof rails
- Mudguards



XLE

Adds to or replaces features offered on LE

Powertrain

- Available Dynamic Torque-Control AWD

Exterior Features

- Integrated fog lights
- Silver-highlighted lower grille
- 17-in. 5-spoke alloy wheels with P225/65R17 tires
- Power tilt/slide moonroof with sunshade

Interior Features

- 4.2-in. TFT Multi-Information Display (MID)
- Dual zone automatic climate control with air filter
- Tilt/telescopic leather-trimmed steering wheel with audio, Multi-Information Display (MID), advanced voice recognition¹⁴ and *Bluetooth*^{®16} hands-free phone controls
- Fabric-trimmed 6-way adjustable driver's seat with sport bolsters and seatback pocket; 4-way adjustable front passenger seat with sport bolsters and seatback pocket

Packages/Options

- Extra Value "Plus" Package includes:
 - Smart Key System²⁶
 - Blind Spot Monitor (BSM)⁵ and Rear Cross-Traffic Alert (RCTA)³⁶
 - Roof rails
 - Entune™ Audio Plus with Connected Navigation App¹⁷
 - Backup camera⁷ with projected path dynamic gridlines
- Extra Value "Power Plus" Package includes:
 - Smart Key System²⁶
 - Blind Spot Monitor (BSM)⁵ and Rear Cross-Traffic Alert (RCTA)³⁶
 - Roof rails
 - Entune™ Audio Plus with Connected Navigation App¹⁷
 - Backup camera⁷ with projected path dynamic gridlines
 - Height-adjustable power liftgate with jam protection
- Extra Value "Power Premium" Package includes:
 - Smart Key System²⁶
 - Blind Spot Monitor (BSM)⁵ and Rear Cross-Traffic Alert (RCTA)³⁶
 - Roof rails
 - Entune™ Premium Audio with Integrated Navigation²² and App Suite⁹
 - Height-adjustable power liftgate with jam protection
- Entune™ Premium Audio with Integrated Navigation²² and App Suite⁹
- Height-adjustable power liftgate with jam protection
- Cargo net hammock
- Cargo area tonneau cover
- Roof rails
- Mudguards



Adventure

Adds to or replaces features offered on LE

Powertrain

- Available Dynamic Torque-Control AWD

Exterior Features

- Halogen projector-beam headlights with black bezels and auto on/off feature
- Integrated fog lights with black accents
- Unique lower valance panels and rocker panel guards
- Larger overfender flares
- Black RAV4 Adventure badging
- 18-in. 5-spoke Black alloy wheels
- Black roof rails

Interior Features

- Entune™ Audio
- Adventure shift lever
- Heavy-duty Adventure all-weather floor liners and cargo mats²⁵
- 120V/100W power outlet in rear cargo area

Packages/Options

- Extra Value "Plus" Package includes:
 - Smart Key System²⁶
 - Blind Spot Monitor (BSM)⁵ and Rear Cross-Traffic Alert (RCTA)³⁶
 - Entune™ Audio Plus with Connected Navigation App¹⁷
 - Backup camera⁷ with projected path dynamic gridlines
- Extra Value "Power Plus" Package includes:
 - Smart Key System²⁶
 - Blind Spot Monitor (BSM)⁵ and Rear Cross-Traffic Alert (RCTA)³⁶
 - Entune™ Audio Plus with Connected Navigation App¹⁷
 - Backup camera⁷ with projected path dynamic gridlines
 - Height-adjustable power liftgate with jam protection
- Extra Value "Power Premium" Package includes:
 - Smart Key System²⁶
 - Blind Spot Monitor (BSM)⁵ and Rear Cross-Traffic Alert (RCTA)³⁶
 - Entune™ Premium Audio with Integrated Navigation²² and App Suite⁹
 - Height-adjustable power liftgate with jam protection
- Cold Area Package includes:
 - Heated fabric front-row seats with 8-way power-adjustable driver's seat
 - Heated leather-wrapped steering wheel
 - Wiper de-icer
- Adventure mudguards
- Front and rear parking sonar³
- Cargo area tonneau cover
- Cargo net hammock



SE

Powertrain

- Available Dynamic Torque-Control AWD

Exterior Features

- LED projector-beam headlights with auto on/off feature
- LED Daytime Running Lights (DRL)
- 18-in. 5-spoke Sport alloy wheels with P235/55R18 tires
- Black-painted heated power outside mirrors with turn signal indicators and folding feature

Interior Features

- Entune™ Audio Plus with Connected Navigation App¹⁷
- 4.2-in. TFT Multi-Information Display (MID)
- Steering wheel-mounted paddle shifters
- SofTex®-trimmed 8-way power-adjustable driver's seat with power lumbar support, sport bolsters and seatback pocket; 4-way adjustable front passenger seat with sport bolsters and seatback pocket
- Driver and front passenger heated seats
- SofTex®-trimmed 60/40 split, reclining, fold-flat second-row seat with center armrest

Packages/Options

- Advanced Technology Package includes:
 - Bird's Eye View Camera⁹ with Perimeter Scan
 - Blind Spot Monitor (BSM)⁵ and Rear Cross-Traffic Alert (RCTA)³⁶
 - Front and rear parking sonar³
 - Entune™ Premium JBL® Audio with Integrated Navigation²² and App Suite⁹
 - Smart Key System²⁶ on front doors with Push Button Start and remote power liftgate function
- Extra Value "Power" Package includes:
 - Smart Key System²⁶
 - Blind Spot Monitor (BSM)⁵ and Rear Cross-Traffic Alert (RCTA)³⁶
 - Height-adjustable power liftgate with jam protection
 - Frameless auto-dimming rearview mirror with HomeLink²⁴
- Entune™ Premium JBL® Audio with Integrated Navigation²² and App Suite⁹
- Available S-Code Paint Treatment⁴³
- Cargo net hammock
- Cargo area tonneau cover



Limited

Adds to or replaces features offered on SE

Powertrain

- Available Dynamic Torque-Control AWD

Exterior Features

- 18-in. 5-spoke SuperChrome alloy wheels with P235/55R18 tires
- Heated power outside mirrors with turn signal and blind spot warning indicators⁵ and folding feature

Interior Features

- Entune™ Premium Audio with Integrated Navigation²² and App Suite⁹
- Frameless auto-dimming rearview mirror with HomeLink²⁴
- Leather-trimmed shift lever with silver accents
- 4.2-in. TFT Multi-Information Display (MID)
- SofTex®-trimmed 8-way power-adjustable driver's seat with memory function, power lumbar support, sport bolsters and seatback pocket; 4-way adjustable front passenger seat with sport bolsters and seatback pocket
- Driver and front passenger heated seats
- SofTex®-trimmed 60/40 split, reclining, fold-flat second-row seat with center armrest
- Blind Spot Monitor (BSM)⁵ and Rear Cross-Traffic Alert (RCTA)³⁶

Packages/Options

- Advanced Technology Package includes:
 - Bird's Eye View Camera⁹ with Perimeter Scan
 - Entune™ Premium JBL® Audio with Integrated Navigation²² and App Suite⁹
 - Front and rear parking sonar³
- Entune™ Premium JBL® Audio with Integrated Navigation²² and App Suite⁹
- Cargo net hammock
- Cargo area tonneau cover
- Smart Key System²⁶ on front doors with Push Button Start and remote power liftgate function



Platinum

Adds to or replaces features offered on Limited

Powertrain

- Available Dynamic Torque-Control AWD

Exterior Features

- Full-body color
- Hands-free, foot-activated power liftgate⁶ with jam protection
- Platinum badging
- Front and rear parking sonar³
- 18-in. 5-spoke SuperChrome alloy wheels with P235/55R18 tires
- LED projector-beam headlights with auto on/off feature
- LED Daytime Running Lights (DRL)
- Heated power outside mirrors with turn signal and blind spot warning indicators⁵ and folding feature

Interior Features

- Bird's Eye View Camera⁸ with Perimeter Scan
- Smart Key System²⁶ on all doors with Push Button Start and remote power liftgate function
- Heated steering wheel
- Platinum floor mats²⁵
- Platinum doorsill protectors
- Ambient footwell lighting
- SofTex®-trimmed 8-way power-adjustable driver's seat with memory function; 4-way adjustable front passenger seat
- SofTex®-covered sliding center armrest with console storage box and tray
- Entune™ Premium JBL® Audio with Integrated Navigation²² and App Suite⁹

Options

- Cargo net hammock
- Cargo area tonneau cover



XLE Hybrid

Powertrain

- 2.5L 4-Cylinder Engine
- CVT
- 194 net hp
- Electronic On-Demand AWD with intelligence (AWD-i)

Exterior Features

- Halogen projector-beam headlights with auto on/off feature
- Integrated fog lights
- Silver-highlighted lower grille
- 17-in. 5-spoke alloy wheels with P225/65R17 tires
- Power tilt/slide moonroof with sunshade

Interior Features

- Dual zone automatic climate control with air filter
- Tilt/telescopic leather-trimmed steering wheel with audio, Multi-Information Display (MID), advanced voice recognition¹⁴ and Bluetooth^{®16} hands-free phone controls
- Fabric-trimmed 6-way adjustable driver's seat with sport bolsters and seatback pocket; 4-way adjustable front passenger seat with sport bolsters and seatback pocket
- Smart Key System²⁶ with Push Button Start

Packages/Options

- Hybrid Convenience Package includes:
 - Blind Spot Monitor (BSM)⁵ and Rear Cross-Traffic Alert (RCTA)³⁶
 - Front and rear parking sonar³
 - Entune™ Premium Audio with Integrated Navigation²² and App Suite⁹
 - Height-adjustable power liftgate with jam protection
- Height-adjustable power liftgate with jam protection
- Entune™ Premium Audio with Integrated Navigation²² and App Suite⁹
- Cargo net hammock
- Cargo area tonneau cover
- Roof rails
- Mudguards



SE Hybrid

Adds to or replaces features offered on XLE Hybrid

Exterior Features

- LED projector-beam headlights with auto on/off feature
- LED Daytime Running Lights (DRL)
- 18-in. 5-spoke Sport alloy wheels with P235/55R18 tires
- Black-painted heated power outside mirrors with turn signal indicators and folding feature

Interior Features

- Entune™ Audio Plus with Connected Navigation App¹⁷
- 4.2-in. TFT Multi-Information Display (MID)
- SofTex[®]-trimmed 8-way power-adjustable driver's seat with power lumbar support, sport bolsters and seatback pocket; 4-way adjustable front passenger seat with sport bolsters and seatback pocket
- Driver and front passenger heated seats
- SofTex[®]-trimmed 60/40 split, reclining, fold-flat second-row seat with center armrest
- Smart Key System²⁶ with Push Button Start and remote power liftgate function
- Blind Spot Monitor (BSM)⁵ and Rear Cross-Traffic Alert (RCTA)³⁶

Packages/Options

- Advanced Technology Package includes:
 - Bird's Eye View Camera⁸ with Perimeter Scan
 - Front and rear parking sonar³
 - Entune™ Premium JBL[®] Audio with Integrated Navigation²² and App Suite⁹
- Entune™ Premium JBL[®] Audio with Integrated Navigation²² and App Suite⁹
- Cargo net hammock
- Cargo area tonneau cover
- Roof rails
- Mudguards



Limited Hybrid

Adds to or replaces features offered on SE Hybrid

Exterior Features

- 18-in. 5-spoke SuperChrome alloy wheels with P235/55R18 tires
- Heated power outside mirrors with turn signal and blind spot warning indicators⁵ and folding feature

Interior Features

- Entune™ Premium Audio with Integrated Navigation²² and App Suite⁹
- Frameless auto-dimming rearview mirror
- Leather-trimmed shift lever with silver accents
- 4.2-in. TFT Multi-Information Display (MID)
- SofTex[®]-trimmed 8-way power-adjustable driver's seat with memory function, power lumbar support, sport bolsters and seatback pocket; 4-way adjustable front passenger seat with sport bolsters and seatback pocket
- Driver and front passenger heated seats
- SofTex[®]-trimmed 60/40 split, reclining, fold-flat second-row seat with center armrest
- Smart Key System²⁶ with Push Button Start and remote power liftgate function
- Blind Spot Monitor (BSM)⁵ and Rear Cross-Traffic Alert (RCTA)³⁶

Packages/Options

- Advanced Technology Package includes:
 - Bird's Eye View Camera⁸ with Perimeter Scan
 - Entune™ Premium JBL[®] Audio with Integrated Navigation²² and App Suite⁹
- Entune™ Premium JBL[®] Audio with Integrated Navigation²² and App Suite⁹
- Cargo net hammock
- Cargo area tonneau cover
- Roof rails
- Mudguards

COLOR*

Color



Black



Galactic Aqua Mica



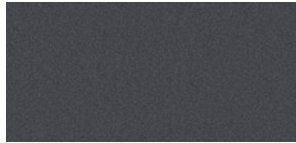
Electric Storm Blue



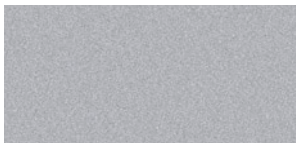
Black Currant Metallic



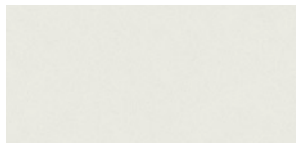
Ruby Flare Pearl⁴³



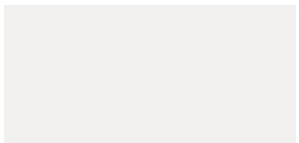
Magnetic Gray Metallic



Silver Sky Metallic



Blizzard Pearl⁴³



Super White

Hybrid Color



Black Sand Pearl



Galactic Aqua Mica



Electric Storm Blue



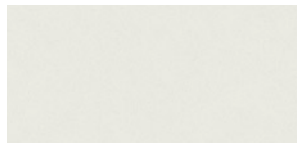
Ruby Flare Pearl⁴³



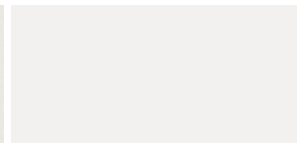
Magnetic Gray Metallic



Silver Sky Metallic



Blizzard Pearl⁴³



Super White

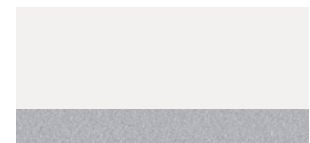
SE S-Code⁴³



Black/Silver Sky Metallic



Electric Storm Blue/
Silver Sky Metallic



Super White/Silver Sky Metallic

*Not all colors available on all model grades. See dealer for details. See numbered footnotes in Disclosures section.

Trim



LE fabric shown in Black



XLE and Adventure fabric shown in Black



XLE and Adventure fabric shown in Ash
Also available in



XLE fabric shown in Nutmeg



XLE Hybrid fabric shown in Black



Ash

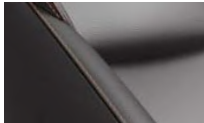


Nutmeg

Also available in



SE/SE Hybrid SofTex® shown in Black with Cinnamon

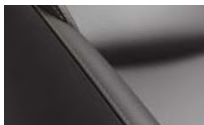


Black

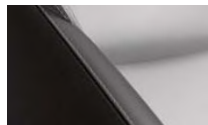
Also available in



Limited/Limited Hybrid SofTex® shown in Cinnamon



Black



Ash

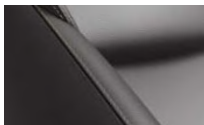


Nutmeg

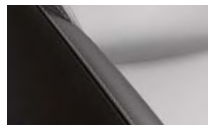
Also available in



Platinum SofTex® shown in Cinnamon



Black



Ash

Wheels



LE 17-in. wide-vent steel wheel with wheel cover



XLE 17-in. 5-spoke alloy wheel



XLE Hybrid 17-in. 5-spoke alloy wheel



Adventure 18-in. 5-spoke alloy wheel



SE 18-in. 5-spoke alloy wheel



Limited/Platinum 18-in. 5-spoke SuperChrome alloy wheel

*Not all trims available on all model grades. See dealer for details.

ACCESSORIES

A wide range of Genuine Toyota Accessories is available to help make driving your RAV4 even more fun. Now your RAV4 can reflect your personal style. There's something for everyone. Some accessories may not be available in all regions of the country. For a complete list of accessories, go to toyota.com/rav4.

Alloy wheel locks
All-weather floor liners²⁵
Body side moldings
Cargo cover
Cargo net hammock
Cargo tote⁴⁵
Cargo tray
Carpet floor mats²⁵

Carpet trunk mat
Chrome lower door moldings
Coin holder/ashtray cup
Door edge guards
Doorsill protector
Emergency assistance kit
First aid kit
Glass Breakage Sensor (GBS)⁴⁹

Hideaway cargo net⁴⁵
Illuminated doorsills
Key Finder⁵⁰
Mudguards
Paint protection film⁵¹
Rear bumper appliqué
Rear spoiler protector
Remote Engine Starter⁵²

Roof rack cross bars
Running boards
Shift knob
Tablet holder
Towing hitch receiver⁴⁶
Trailer ball⁴⁶
Vehicle Intrusion Protection (VIP) Security System⁵³



Roof rack cross bars



All-weather floor liners²⁵



Running boards



Cargo net hammock



Rear spoiler protector



Cargo tray



Fog lights



Interior light kit

FEATURES¹

	LE	XLE	ADVENTURE	SE	LIMITED	PLATINUM	XLE HYBRID	SE HYBRID	LIMITED HYBRID
EXTERIOR									
Halogen projector-beam headlights with auto on/off feature	S	S	—	—	—	—	S	—	—
Halogen projector-beam headlights with black bezels and auto on/off feature	—	—	S	—	—	—	—	—	—
LED projector-beam headlights with auto on/off feature	—	—	—	S	S	S	—	S	S
Halogen Daytime Running Lights (DRL)	S	S	S	—	—	—	S	—	—
LED Daytime Running Lights (DRL)	—	—	—	S	S	S	—	S	S
Color-keyed rear spoiler with LED brake light	S	S	S	S	S	S	S	S	S
Front bumper integrated fog lights	—	S	S	S	S	S	S	S	S
Front bumper integrated fog lights with black accents	—	—	S	—	—	—	—	—	—
Automatic Limited-Slip Differential (Auto LSD) ²	S	S	S	S	S	S	—	—	—
Dynamic Torque-Control AWD	O	O	O	O	O	O	—	—	—
Electronic On-Demand AWD with intelligence (AWD-i)	—	—	—	—	—	—	S	S	S
Front and rear parking sonar ³	—	O	O	P	P	S	P	P	S
17-in. wide-vent steel wheels with wheel covers and P225/65R17 tires	S	—	—	—	—	—	—	—	—
17-in. 5-spoke alloy wheels with P225/65R17 tires	—	S	—	—	—	—	S	—	—
18-in. 5-spoke Black alloy wheels with P235/55R18 tires	—	—	S	—	—	—	—	—	—
18-in. 5-spoke Sport alloy wheels with P235/55R18 tires	—	—	—	S	—	—	—	S	—
18-in. 5-spoke SuperChrome alloy wheels with P235/55R18 tires	—	—	—	—	S	S	—	—	S
Color-keyed roof-mounted shark-fin antenna	S	S	S	S	S	S	S	S	S
Color-keyed outside door handles	S	S	S	S	—	S	S	S	—
Chrome outside door handles	—	—	—	—	S	—	—	—	S
Front and rear silver-painted bumper garnish	—	S	—	S	S	S	S	S	S
Unique lower valance panels and rocker panel guards	—	—	S	—	—	—	—	—	—
Larger overfender flares	—	—	S	—	—	—	—	—	—
Black RAV4 Adventure badging	—	—	S	—	—	—	—	—	—
Power outside mirrors with folding feature and blind spot mirrors ⁴	S	—	—	—	—	—	—	—	—
Power heated outside mirrors, blind spot mirrors, ⁴ turn signal indicators and folding feature	—	S	S	S	—	—	S	S	—
Power heated outside mirrors with turn signal and blind spot warning indicators ⁵ and folding feature	—	P	P	P	S	S	P	P	S
Washer-linked intermittent windshield wiper and intermittent rear window wiper	S	—	—	—	—	—	—	—	—
Washer-linked variable intermittent windshield wiper and intermittent rear window wiper	—	S	S	S	S	S	S	S	S
Rear window defogger with timer	S	S	S	S	S	S	S	S	S
Power tilt/slide moonroof with sunshade	—	S	S	S	S	S	S	S	S
Height-adjustable power liftgate with jam protection	—	P	P	P	S	—	O/P	S	S
Hands-free, height-adjustable, foot-activated power liftgate with jam protection ⁶	—	—	—	—	O	S	—	—	O
Privacy glass on rear side, quarter and liftgate windows	S	S	—	S	S	S	S	S	S
Acoustic noise-reducing front windshield	S	S	S	S	S	S	S	S	S
Roof rails	O	P	—	S	S	S	S	S	S
Black roof rails	—	—	S	—	—	—	—	—	—
Mudguards	O	O	—	O	O	O	O	O	O
Unique Adventure mudguards	—	—	O	—	—	—	—	—	—
INTERIOR									
Air conditioning with air filter	S	—	—	—	—	—	—	—	—
Dual zone automatic climate control with air filter	—	S	S	S	S	S	S	S	S
Backup camera ⁷ with projected path static lines	S	S	S	—	—	—	—	—	—
Backup camera ⁷ with projected path dynamic gridlines	—	P	P	S	S	—	S	S	S
Bird's Eye View Camera ⁸ — Perimeter Scan, overhead 360-degree view in Drive and Reverse, and curb view	—	—	—	P	P	S	—	P	P
Entune ⁹ App Suite ⁹ — includes Destination Search, Facebook Places, iHeartRadio, MovieTickets.com, OpenTable, ⁹ Pandora, ¹⁰ Yelp, ⁹ Slacker Radio, and real-time info including traffic, weather, fuel prices, sports and stocks. Access to Entune ⁹ App Suite ⁹ is subscription-free. See toyota.com/entune for details.	—	P	P	O	S	S	O	O	S

See numbered footnotes in Disclosures section.

S = Standard O = Optional — = Not available P = Available as part of a package

FEATURES¹ (continued)


INTERIOR (continued)

	LE	XLE	ADVENTURE	SE	LIMITED	PLATINUM	XLE HYBRID	SE HYBRID	LIMITED HYBRID
Entune™ Audio — includes Entune™ Multimedia Bundle ¹¹ (6.1-in. touch-screen display, AM/FM CD player, MP3/WMA playback capability, six speakers, auxiliary audio jack, USB 2.0 port ¹² with iPod® ¹³ connectivity and control, advanced voice recognition ¹⁴ hands-free phone capability, phone book access and music streaming ¹⁵ via Bluetooth® ¹⁶ wireless technology) and integrated backup camera display ⁷ with static gridlines (with projected path static lines on LE)	S	S	S	—	—	—	—	—	—
Entune™ Audio Plus with Connected Navigation App ¹⁷ — includes Entune™ Multimedia Bundle ¹¹ (6.1-in. high-resolution touch-screen display, AM/FM CD player, MP3/WMA playback capability, six speakers, auxiliary audio jack, USB 2.0 port ¹² with iPod® ¹³ connectivity and control, advanced voice recognition ¹⁴ hands-free phone capability, phone book access and music streaming ¹⁵ via Bluetooth® ¹⁶ wireless technology), Scout® GPS Link App, ¹⁷ Siri® Eyes Free, ¹⁸ SiriusXM® Satellite Radio ¹⁹ with 3-month complimentary SiriusXM All Access trial ²⁰ HD Radio™ ²¹ Technology, HD Radio™ Traffic and Weather in major metro areas, and integrated projected path backup camera ⁷ display with dynamic gridlines (with projected path static lines on LE)	O	P	P	S	—	—	S	S	—
Entune™ Premium Audio with Integrated Navigation ²² and App Suite ⁹ — includes Entune™ Multimedia Bundle ¹¹ (7-in. high-resolution touch-screen with split-screen display, AM/FM radio, MP3/WMA playback capability, six speakers, auxiliary audio jack, USB 2.0 port ¹² with iPod® ¹³ connectivity and control, advanced voice recognition ¹⁴ hands-free phone capability, phone book access and music streaming ¹⁵ via Bluetooth® ¹⁶ wireless technology), Siri® Eyes Free, ¹⁸ Entune® App Suite ⁹ HD Radio™ ²¹ Technology, HD Radio™ Predictive Traffic and Doppler Weather overlay, AM/FM cache radio, SiriusXM® Satellite Radio ¹⁹ with 3-month complimentary SiriusXM All Access trial ²⁰ Gracenote® album cover art and integrated projected path backup camera ⁷ display with dynamic gridlines. Access to Entune® App Suite ⁹ is subscription-free. See toyota.com/entune for details.	—	P	P	—	S	—	—	—	S
Entune™ Premium JBL® Audio with Integrated Navigation ²² and App Suite ⁹ — includes Entune™ Multimedia Bundle ¹¹ (7-in. high-resolution touch-screen with split-screen display, AM/FM radio, MP3/WMA playback capability, 11 JBL® GreenEdge™ speakers including subwoofer, auxiliary audio jack, USB 2.0 port ¹² with iPod® ¹³ connectivity and control, advanced voice recognition ¹⁴ hands-free phone capability, phone book access and music streaming ¹⁵ via Bluetooth® ¹⁶ wireless technology), Siri® Eyes Free, ¹⁸ Entune® App Suite ⁹ HD Radio™ ²¹ Technology, HD Radio™ Predictive Traffic and Doppler Weather overlay, AM/FM cache radio, SiriusXM® Satellite Radio ¹⁹ with 3-month complimentary SiriusXM All Access trial ²⁰ Gracenote® album cover art and integrated projected path backup camera ⁷ display with dynamic gridlines. Access to Entune® App Suite ⁹ is subscription-free. See toyota.com/entune for details.	—	—	—	O	O	S	—	O	O
4.2-in. TFT Multi-Information Display (MID) with audio, customizable settings, odometer, outside temperature, clock, fuel economy and trip information, current/average fuel economy, distance to empty, cruising range, average speed, trip distance with timer, compass and warning messages	S	S	S	S	S	S	—	—	—
4.2-in. TFT Multi-Information Display (MID) with audio, customizable settings, odometer, outside temperature, clock, fuel economy and trip information, fuel economy history, current/average fuel economy, distance to empty, cruising range, average speed, trip distance with timer, hybrid system information, EV Driving Ratio, Hybrid System Indicator, ECO Savings Record, energy monitor, compass, 4WD Drive Force distribution and warning messages	—	—	—	—	—	—	S	S	S
ECO and Sport Modes	S	S	S	S	S	S	—	—	—
ECO, Sport and EV ²³ Modes	—	—	—	—	—	—	S	S	S
Day/night rearview mirror	S	S	S	S	—	—	S	S	—
Frameless auto-dimming rearview mirror with HomeLink® ²⁴	—	—	—	P	P	S	—	P	S
Tilt/telescopic urethane steering wheel with audio, Multi-Information Display (MID), voice recognition ¹⁴ and Bluetooth® ¹⁶ hands-free phone controls	S	—	—	—	—	—	—	—	—
Tilt/telescopic leather-trimmed steering wheel with audio, Multi-Information Display (MID), voice recognition ¹⁴ and Bluetooth® ¹⁶ hands-free phone controls	—	S	S	S	S	S	S	S	S
Heated steering wheel	—	—	O	—	—	S	—	—	—
Steering wheel-mounted paddle shifters	—	—	—	S	—	—	—	—	—
Leather-trimmed shift lever	—	—	—	—	S	S	—	—	S
SE shift lever	—	—	—	S	—	—	—	S	—
Adventure shift lever	—	—	S	—	—	—	—	—	—
Sport doorsill protectors	—	—	—	S	—	—	—	S	—
Sport floor mats ²⁵	—	—	—	S	—	—	—	S	—
Unique doorsill protectors	—	—	S	—	—	S	—	—	—
Heavy-duty Adventure all-weather floor and cargo mats ²⁵	—	—	S	—	—	—	—	—	—
Ambient footwell lighting	—	—	—	—	—	S	—	—	—
Fabric-trimmed 6-way adjustable driver's seat with seatback pocket; 4-way adjustable front passenger seat with seatback pocket	S	—	—	—	—	—	—	—	—
Fabric-trimmed 8-way adjustable driver's seat with sport bolsters and seatback pocket; 4-way adjustable front passenger seat with sport bolsters and seatback pocket	—	O	P	—	—	—	O	—	—
Fabric-trimmed 6-way adjustable driver's seat with sport bolsters and seatback pocket; 4-way adjustable front passenger seat with sport bolsters and seatback pocket	—	S	S	—	—	—	S	—	—

See numbered footnotes in Disclosures section.

S = Standard O = Optional — = Not available P = Available as part of a package

FEATURES¹ (continued)

INTERIOR (continued)	LE	XLE	ADVENTURE	SE	LIMITED	PLATINUM	XLE HYBRID	SE HYBRID	LIMITED HYBRID
SofTex [®] -trimmed 8-way power-adjustable driver's seat with power lumbar support, sport bolsters and seatback pocket; 4-way adjustable front passenger seat with sport bolsters and seatback pocket	—	—	—	S	—	—	—	S	—
SofTex [®] -trimmed 8-way power-adjustable driver's seat with memory function, power lumbar support, sport bolsters and seatback pocket; 4-way adjustable front passenger seat with sport bolsters and seatback pocket	—	—	—	—	S	S	—	—	S
Driver and front passenger heated seats	—	O	P	S	S	S	O	S	S
Fabric-trimmed 60/40 split, reclining, fold-flat second-row seat with center armrest	S	S	S	—	—	—	S	—	—
SofTex [®] -trimmed 60/40 split, reclining, fold-flat second-row seat with center armrest	—	—	—	S	S	S	—	S	S
Power windows with driver auto down	S	—	—	—	—	—	—	—	—
Power windows with driver auto up/down with jam protection	—	S	S	S	S	S	S	S	S
Power door locks with shift-linked automatic lock/unlock feature	S	S	S	S	S	S	S	S	S
Cargo area tonneau cover	O	O	O	O	O	O	O	O	O
Cargo net hammock	O	O	O	O	O	O	O	O	O
Remote keyless entry system	S	S	S	S	—	—	—	—	—
Smart Key System ²⁶ on front doors with Push Button Start and remote power liftgate function	—	P	P	P	S	—	S	S	S
Smart Key System ²⁶ on all doors with Push Button Start and remote power liftgate function	—	—	—	—	O	S	—	—	—
Illuminated entry system (key illumination, interior light and front personal light)	S	S	S	S	S	S	S	S	S
Center armrest with console storage box	S	S	S	S	—	—	S	S	—
SofTex [®] -covered sliding center armrest with console storage box	—	—	—	—	S	S	—	—	S
Eight cup/bottle holders	S	S	S	S	S	S	S	S	S
Door panel storage pockets	S	S	S	S	S	S	S	S	S
One front-row USB outlet ¹²	S	S	S	S	S	S	S	S	S
Three front 12V power outlets (two in front row, one in second row)	S	S	S	S	S	S	S	S	S
120V/100W power outlet in rear cargo area	—	—	S	—	—	—	—	—	—
Dual sun visors with vanity mirrors	S	—	—	—	—	—	—	—	—
Dual sun visors with vanity mirrors and extenders	—	S	S	S	S	S	S	S	S
Overhead console with integrated sunglasses holder	S	S	S	S	S	S	S	S	S
SAFETY/CONVENIENCE									
Toyota Safety Sense [™] P (TSS-P) ²⁷ — Pre-Collision System ²⁸ with Pedestrian Detection ²⁹ (PCS w/PD), Lane Departure Alert with Steering Assist (LDA w/SA) ³⁰ , Automatic High Beams (AHB) ³¹ and Dynamic Radar Cruise Control (DRCC) ³²	S	S	S	S	S	S	S	S	S
 Star Safety System [™] — includes Enhanced Vehicle Stability Control (VSC) ³³ , Traction Control (TRAC), Anti-lock Brake System (ABS), Electronic Brake-force Distribution (EBD), Brake Assist (BA) ³⁴ and Smart Stop Technology [®] (SST) ³⁵	S	S	S	S	S	S	S	S	S
Blind Spot Monitor (BSM) ⁵ and Rear Cross-Traffic Alert (RCTA) ³⁶	—	P	P	P	S	S	P	S	S
Front and rear parking sonar ³	—	O	O	P	P	S	P	P	S
Hill Start Assist Control (HAC) ³⁷	S	S	S	S	S	S	S	S	S
Trailer-Sway Control (TSC) ³⁸	S	S	S	—	S	S	S	—	S
Tire Pressure Monitor System (TPMS) ³⁹	S	S	S	S	S	S	S	S	S
Driver and front passenger Advanced Airbag System ⁴⁰ ; driver knee airbag; front passenger seat-cushion airbag; driver and front passenger seat-mounted side airbags; and front- and second-row Roll-sensing Side Curtain Airbags (RSCA)	S	S	S	S	S	S	S	S	S
Driver and front passenger Whiplash-Injury-Lessening (WIL) seats ⁴¹	S	S	S	S	S	S	S	S	S
3-point seatbelts in all seating positions, with adjustable front seatbelt anchors	S	S	S	S	S	S	S	S	S
Driver and front passenger seatbelt pretensioners with force limiters	S	S	S	S	S	S	S	S	S
Driver-side Emergency Locking Retractor (ELR) and Automatic/Emergency Locking Retractor (ALR/ELR) on all passenger belts	S	S	S	S	S	S	S	S	S
Driver and front passenger seatbelt warning system	S	S	S	S	S	S	S	S	S
LATCH (Lower Anchors and Tethers for Children) includes lower anchors and tether anchors on outboard second-row seats	S	S	S	S	S	S	S	S	S
Child-protector rear door locks	S	S	S	S	S	S	S	S	S
Engine immobilizer ⁴²	S	S	S	S	S	S	S	S	S

See numbered footnotes in Disclosures section.

S = Standard O = Optional — = Not available P = Available as part of a package

FEATURES¹ (continued)

OPTIONS	LE	XLE	ADVENTURE	SE	LIMITED	PLATINUM	XLE HYBRID	SE HYBRID	LIMITED HYBRID
Roof rails	O	P	—	S	S	S	S	S	S
Mudguards	O	O	—	O	O	O	O	O	O
Adventure mudguards	—	—	S	—	—	—	—	—	—
Blind Spot Monitor (BSM) ⁵ and Rear Cross-Traffic Alert (RCTA) ³⁶	—	P	P	P	S	S	P	S	S
Front and rear parking sonar ³	—	O	O	P	P	S	P	P	S
Height-adjustable power liftgate with jam protection	—	P	P	P	—	—	O	—	—
Hands-free, height-adjustable, foot-activated power liftgate with jam protection ⁶	—	—	—	—	O	S	—	—	O
Entune™ Audio Plus with Connected Navigation App ¹⁷	O	P	P	S	—	—	S	S	—
Entune™ Premium Audio with Integrated Navigation ²² and App Suite ⁹	—	P	P	O	S	—	O	O	S
Heated fabric front-row seats with 8-way power-adjustable driver's seat	—	O	P	—	—	—	O	—	—
Cargo net hammock	O	O	O	O	O	O	O	O	O
Cargo area tonneau cover	O	O	O	O	O	O	O	O	O

S = Standard O = Optional — = Not available P = Available as part of a package

PACKAGES

XLE

Extra Value “Plus” Package — includes Smart Key System,²⁶ Blind Spot Monitor (BSM)⁵ and Rear Cross-Traffic Alert (RCTA),³⁶ roof rails (XLE only), Entune™ Audio Plus with Connected Navigation App¹⁷ and backup camera⁷ with projected path dynamic gridlines

Extra Value “Power Plus” Package — includes height-adjustable power liftgate with jam protection, Smart Key System,²⁶ Blind Spot Monitor (BSM)⁵ and Rear Cross-Traffic Alert (RCTA),³⁶ roof rails (XLE only), Entune™ Audio Plus with Connected Navigation App¹⁷ and backup camera⁷ with projected path dynamic gridlines

Extra Value “Power Premium” Package — includes height-adjustable power liftgate with jam protection, Smart Key System,²⁶ Blind Spot Monitor (BSM)⁵ and Rear Cross-Traffic Alert (RCTA),³⁶ roof rails, and Entune™ Premium Audio with Integrated Navigation²² and App Suite⁹. Access to Entune® App Suite⁹ is subscription-free. See toyota.com/entune for details.

Adventure

Extra Value “Plus” Package — includes Smart Key System,²⁶ Blind Spot Monitor (BSM)⁵ and Rear Cross-Traffic Alert (RCTA),³⁶ roof rails (on XLE only), Entune™ Audio Plus with Connected Navigation App¹⁷ and backup camera⁷ with projected path dynamic gridlines

Extra Value “Power Plus” Package — includes height-adjustable power liftgate with jam protection, Smart Key System,²⁶ Blind Spot Monitor (BSM)⁵ and Rear Cross-Traffic Alert (RCTA),³⁶ roof rails (on XLE only), Entune™ Audio Plus with Connected Navigation App¹⁷ and backup camera⁷ with projected path dynamic gridlines

Extra Value “Power Premium” Package — includes height-adjustable power liftgate with jam protection, Smart Key System,²⁶ Blind Spot Monitor (BSM)⁵ and Rear Cross-Traffic Alert (RCTA),³⁶ roof rails (on XLE only), and Entune™ Premium Audio with Integrated Navigation²² and App Suite⁹. Access to Entune® App Suite⁹ is subscription-free. See toyota.com/entune for details.

Cold Area Package — includes heated fabric front-row seats with 8-way power-adjustable driver's seat, heated leather-wrapped steering wheel and wiper de-icer

SE

Extra Value “Power” Package — includes height-adjustable power liftgate with jam protection, Smart Key System,²⁶ Blind Spot Monitor (BSM)⁵ and Rear Cross-Traffic Alert (RCTA),³⁶ and frameless auto-dimming rearview mirror with HomeLink^{®24}

S-Code Paint Treatment⁴³ and Parking Sonar³ — includes silver-painted front and rear lower bumper, rocker panel, overfenders, with black front and rear bumper garnish (requires Extra Value “Power Plus” Package)

Advanced Technology Package — includes Bird's Eye View Camera⁸ with Perimeter Scan, front and rear parking sonar,³ and Entune™ Premium JBL® Audio with Integrated Navigation²² and App Suite⁹. Access to Entune® App Suite⁹ is subscription-free. See toyota.com/entune for details.

Limited

Advanced Technology Package — includes Bird's Eye View Camera⁸ with Perimeter Scan, front and rear parking sonar,³ and Entune™ Premium JBL® Audio with Integrated Navigation²² and App Suite⁹. Access to Entune® App Suite⁹ is subscription-free. See toyota.com/entune for details.

XLE Hybrid

Convenience Package — includes height-adjustable power liftgate with jam protection, Blind Spot Monitor (BSM)⁵ and Rear Cross-Traffic Alert (RCTA),³⁶ front and rear parking sonar,³ and Entune™ Premium Audio with Integrated Navigation²² and App Suite⁹. Access to Entune® App Suite⁹ is subscription-free. See toyota.com/entune for details.

SPECIFICATIONS (continued)

MECHANICAL/PERFORMANCE	LE	XLE	ADVENTURE	SE	LIMITED	PLATINUM	XLE HYBRID	SE HYBRID	LIMITED HYBRID
ENGINE									
2.5-Liter 4-Cylinder DOHC 16-Valve with Dual VVT-i, 176 hp @ 6000 rpm/172 lb.-ft. @ 4100 rpm	S	S	S	S	S	S	—	—	—
2.5-Liter 4-Cylinder DOHC 16-Valve with VVT-i, 194 net system hp	—	—	—	—	—	—	S	S	S
EMISSION RATING									
Ultra Low Emission Vehicle II (ULEV-II)	S	S	S	S	S	S	—	—	—
Super Ultra Low Emission Vehicle (SULEV) ⁴⁴	—	—	—	—	—	—	S	S	S
IGNITION									
Electronic, with Toyota Direct Ignition (TDI)	S	S	S	S	S	S	S	S	S
TRANSMISSION									
6-speed Electronically Controlled automatic Transmission with intelligence (ECT-i)	S	S	S	S	S	S	—	—	—
CVT	—	—	—	—	—	—	S	S	S
BODY CONSTRUCTION									
Unitized body	S	S	S	S	S	S	S	S	S
DRIVETRAIN									
Front-Wheel Drive (FWD) with Automatic Limited-Slip Differential (Auto LSD) ²	S	S	S	S	S	S	—	—	—
Dynamic Torque-Control AWD	O	O	O	O	O	O	—	—	—
Electronic On-Demand AWD with intelligence (AWD-i)	—	—	—	—	—	—	S	S	S
SUSPENSION									
Independent MacPherson strut front suspension with stabilizer bar; double-wishbone style multi-link rear suspension with stabilizer bar	S	S	S	S	S	S	S	S	S
STEERING									
Electric Power Steering (EPS); power-assisted rack-and-pinion	S	S	S	S	S	S	S	S	S
Turning circle diameter, curb to curb (ft.), 17-in. wheels	34.8	34.8	—	—	—	—	34.8	—	—
Turning circle diameter, curb to curb (ft.), 18-in. wheels	—	—	36.7	36.7	36.7	36.7	—	36.7	36.7
BRAKES									
Power-assisted ventilated front disc brakes, solid rear disc brakes and Star Safety System™	S	S	S	S	S	S	S	S	S
COLD AREA EQUIPMENT									
Heavy-duty battery, heavy-duty starter, heavy-duty heater and cold weather engine coolant	S	S	S	S	S	S	S	S	S
DIMENSIONS									
EXTERIOR (in.)									
Overall height (without roof rails)	65.9	65.9	66.3	66.3	65.9	65.9	65.9	66.3	65.9
Overall height (with roof rails)	67.1	67.1	67.1	67.5	67.1	67.1	67.1	67.5	67.1
Overall width	72.6	72.6	72.6	72.6	72.6	72.6	72.6	72.6	72.6
Overall length	183.5	183.5	183.5	183.5	183.5	183.5	183.5	183.5	183.5
Wheelbase	104.7	104.7	104.7	104.7	104.7	104.7	104.7	104.7	104.7
Track (front/rear), 17-in. wheels	61.8/61.8	61.8/61.8	—	—	—	—	61.8/61.8	—	—
Track (front/rear), 18-in. wheels	—	—	61.4/61.4	61.4/61.4	61.4/61.4	61.4/61.4	—	61.4/61.4	61.4/61.4
INTERIOR (in.)									
Head room without moonroof	39.8/38.9	—	—	—	—	—	—	—	—
Head room with moonroof	—	38.9/38.9	38.9/38.9	38.9/38.9	38.9/38.9	38.9/38.9	38.9/38.9	38.9/38.9	38.9/38.9
Shoulder room	57.3/55.4	57.3/55.4	57.3/55.4	57.3/55.4	57.3/55.4	57.3/55.4	57.3/55.4	57.3/55.4	57.3/55.4
Hip room	54.3/48.9	54.3/48.9	54.3/48.9	54.3/48.9	54.3/48.9	54.3/48.9	54.3/48.9	54.3/48.9	54.3/48.9
Leg room	42.6/37.2	42.6/37.2	42.6/37.2	42.6/37.2	42.6/37.2	42.6/37.2	42.6/37.2	42.6/37.2	42.6/37.2
Seating capacity	5	5	5	5	5	5	5	5	5

See numbered footnotes in Disclosures section.

S = Standard O = Optional — = Not available P = Available as part of a package

SPECIFICATIONS (continued)

OFF-HIGHWAY	LE	XLE	ADVENTURE	SE	LIMITED	PLATINUM	XLE HYBRID	SE HYBRID	LIMITED HYBRID
Approach/departure angle (degrees)	28/21	28/21	28/23	28/23	28/21	28/21	28/21	28/23	28/21
Ground clearance (in.)	6.1	6.1	6.5	6.5	6.1	6.1	7	7.4	7
WEIGHTS/CAPACITIES									
Curb weight (lb.)	3455	3485	3485	3520	3520	3,520	3925	3950	3950
Gross Vehicle Weight Rating (GVWR) (lbs.)	4525	4525	4525	4525	4525	4,525	4960	4960	4960
Cargo volume (cu. ft.); ⁴⁵ total behind front/second-row seats	73.4/38.4	73.4/38.4	73.4/38.4	73.4/38.4	70.6/35.6	73.4/38.4	70.6/35.6	70.6/35.6	70.6/35.6
Fuel tank (gal.)	15.9	15.9	15.9	15.9	15.9	15.9	14.8	14.8	14.8
Tow capacity ⁴⁶	1500	1500	2900/3500 (AWD)	0	1500	1500	1750	0	1750
TIRES									
SIZE									
P225/65R17	S	S	—	—	—	—	S	—	—
P235/55R18	—	—	S	S	S	S	—	S	S
TYPE									
All-Season steel-belted radial blackwalls	S	S	S	S	S	S	S	S	—
SPARE									
Temporary (P165/80R17ST)	S	S	S	S	S	S	S	S	S
MILEAGE ESTIMATES (city/highway/combined)⁴⁷									
FWD	23/30/26	23/30/26	23/30/26	23/29/25	23/29/25	23/29/25	—	—	—
AWD	22/28/25	22/28/25	22/28/25	22/28/24	22/28/24	22/28/24	—	—	—
HYBRID	—	—	—	—	—	—	34/30/32	34/30/32	34/30/32

S = Standard O = Optional — = Not available P = Available as part of a package

WARRANTIES

Every Toyota Car, Truck and SUV is built to exceptional standards. And that's not idle boasting. We back it up with these Limited Warranty Coverages:

Basic: 36 months/36,000 miles (all components other than normal wear and maintenance items).

Hybrid-Related Component Coverage: Hybrid-related components, including the HV battery, battery control module, hybrid control module and inverter with converter, are covered for 8 years/100,000 miles. The HV battery may have longer coverage under emissions warranty. Refer to applicable *Warranty and Maintenance Guide* for details.

Powertrain: 60 months/60,000 miles (engine, transmission/transaxle, drive system, seatbelts and airbags).

Rust-Through: 60 months/unlimited miles (corrosion perforation of sheet metal).

Emissions: Coverages vary under Federal and California regulations. Refer to applicable *Warranty and Maintenance Guide* for details.

Accessories: For Genuine Toyota Accessories purchased at the time of the new vehicle purchase, the Toyota Accessory Warranty coverage is in effect for 36 months/36,000 miles from the vehicle's in-service date, which is the same coverage as the Toyota New Vehicle Limited Warranty.

For Genuine Toyota Accessories purchased after the new vehicle purchase the coverage is 12 months, regardless of mileage, from the date the accessory was installed on the vehicle, or the remainder of any applicable new vehicle warranty, whichever provides greater coverage.

You may be eligible for transportation assistance if it's necessary that your vehicle be kept overnight for repairs covered under warranty. Please see your authorized Toyota dealership for further details.

For complete details about Toyota's warranties, please visit www.toyota.com, refer to the applicable *Warranty and Maintenance Guide* or see your Toyota dealer.

Toyota strives to build vehicles to match customer interest and thus they typically are built with popular options and option packages. Not all options/packages are available separately and some may not be available in all regions of the country. See toyota.com for information about options/packages commonly available in your area. If you would prefer a vehicle without any or with different options, contact your dealer to check for current availability or the possibility of placing a special order.

Toyota RAV4 is designed to meet most off-road driving requirements. Abusive use may result in bodily harm or damage. Toyota encourages responsible operation to protect you, your vehicle and the environment. Seatbelts should be worn at all times.

Please do not allow passengers to ride in the cargo area. Towing hitch receiver/ball mount kits are not intended to provide crash protection.

For details on vehicle specifications, standard features and available equipment in your area, contact your Toyota dealer. A vehicle with particular equipment may not be available at the dealership. Ask your Toyota dealer to help locate a specifically equipped vehicle.

All information presented herein is based on data available at the time of posting, is subject to change without notice and pertains specifically to mainland U.S.A. vehicles only. Prototypes shown. Actual production vehicles may vary.

CARS BUILT FOR THE WAY YOU LIVE

At Toyota, we build cars for how you live. From building advanced safety features designed to help prevent crashes to driving cross-country to understand how we can make your driving experience better, our work starts with understanding your needs. Building cars for how you live also means thinking about tomorrow — from fuel efficiency and environmental innovations, to things beyond cars, like a bicycle that you can control with your mind. And because what we learn building cars can help improve lives in other places, we do things like help communities rebuild their homes quickly after a disaster and work with soup kitchens to help them serve more people faster. Toyota. Built for how you live. Together we are going places.

DISCLOSURES

1. Toyota strives to build vehicles to match customer interest and thus they typically are built with popular options and option packages. Not all options/packages are available separately and some may not be available in all regions of the country. If you would prefer a vehicle with no or different options, contact your dealer to check for current availability or the possibility of placing a special order. 2. Auto LSD is an electronic, brake-actuated limited-slip differential that automatically activates when VSC is disengaged at low speeds. 3. Do not exclusively rely on the parking assist sonar system. Always look over your shoulder and use your mirrors to confirm clearance. Certain vehicle and environmental conditions may affect the ability of the sensors to detect an object. Even the shape and composition of the object can be a factor. See *Owner's Manual* for additional limitations and details. 4. Do not rely exclusively on the blind spot mirror. Always look over your shoulder and use your turn signal. There are limitations to the function, detection and range of the mirror. See *Owner's Manual* for additional limitations and details. 5. Do not rely exclusively on the Blind Spot Monitor. Always look over your shoulder and use your turn signal. There are limitations to the function, detection and range of the monitor. See *Owner's Manual* for additional limitations and details. 6. See *Owner's Manual* for additional limitations and details. 7. The backup camera does not provide a comprehensive view of the rear area of the vehicle. You should also look around outside your vehicle and use your mirrors to confirm rearward clearance. Environmental conditions may limit effectiveness and view may become obscured. See *Owner's Manual* for additional limitations and details. 8. The Bird's-Eye-View Camera does not provide a comprehensive view of the area surrounding the vehicle. You should also look around outside your vehicle and use your mirrors to confirm surrounding clearance. Environmental conditions may limit effectiveness and view may become obscured. See *Owner's Manual* for additional limitations and details. 9. Be sure to obey traffic regulations and maintain awareness of road and traffic conditions at all times. Apps/services vary by phone/carrier; functionality depends on many factors. Select apps use large amounts of data; you are responsible for charges. Apps and services subject to change. See toyota.com/entune for details. 10. PANDORA®, the PANDORA® logo, and the Pandora trade dress are trademarks or registered trademarks of Pandora Media, Inc., used with permission. 11. Entune™ is a trademark of Toyota Motor Corporation. Always drive safely, obey traffic laws and focus on the road while driving. Services vary by phone/carrier. Functionality depends on many factors. Services subject to change. For enrollment and more details, see toyota.com/entune. 12. May not be compatible with all mobile phones, MP3/WMA players and like models. 13. iPod® and iPhone® are registered trademarks of Apple Inc. All rights reserved. 14. Advanced voice recognition capabilities vary by head unit. 15. Apps/services vary by phone/carrier; functionality depends on many factors. Select apps use large amounts of data; you are responsible for charges. Apps and services subject to change. See toyota.com/entune for details. 16. The Bluetooth® word mark and logos are registered trademarks owned by Bluetooth SIG, Inc., and any use of such marks by Toyota is under license. A compatible Bluetooth®-enabled phone must first be paired. Phone performance depends on software, coverage and carrier. 17. Be sure to obey traffic regulations and maintain awareness of road and traffic conditions at all times. Apps/services vary by phone/carrier; functionality depends on many factors. Select apps use large amounts of data; you are responsible for charges. Apps and services subject to change. Availability and accuracy of the information provided by Scout® GPS Link is dependent upon many factors. Use common sense when relying on information provided. Services and programming subject to change. Services not available in every city or roadway. See toyota.com/entune for details. Scout® is a registered trademark of Telenav, Inc. 18. Always drive safely, obey traffic laws and focus on the road while driving. Siri® is available on select iPhone®/iPad® models and requires Internet access. Siri® is not available in all languages or all areas and features vary by area. Some Siri® functionality and commands are not accessible in the vehicle. Data charges may apply. See apple.com and phone carrier for details. Siri® is a registered trademark of Apple Inc. 19. SiriusXM audio services require a subscription sold separately, or as a package, by Sirius XM Radio Inc. **If you decide to continue service after your trial, the subscription plan you choose will automatically renew thereafter and you will be charged according to your chosen payment method at then-current rates. Fees and taxes apply. To cancel you must call SiriusXM at 1-866-635-2349. See SiriusXM Customer Agreement for complete terms at www.siriusxm.com.** All fees and programming subject to change. Not all vehicles or devices are capable of receiving all services offered by SiriusXM. Current information and features may not be available in all locations, or on all receivers. ©2017 Sirius XM Radio Inc. Sirius, XM, SiriusXM and all related marks and logos are trademarks of Sirius XM Radio Inc. 20. Trial length and service availability may vary by model, model year or trim. 21. HD Radio™ Technology manufactured under license from iBiquity Digital Corporation U.S. and Foreign Patents. HD Radio™ and the HD, HD Radio, and "Arc" logos are proprietary trademarks of iBiquity Digital Corp. 22. Availability and accuracy of the information provided by the navigation system is dependent upon many factors. Use common sense when relying on information provided. Services and programming subject to change. Services not available in every city or roadway. Updates may be available from your dealer at an additional cost. See *Owner's Manual* for details. 23. CAUTION! When driving a hybrid vehicle, pay special attention to the area around the vehicle. Because there is little vehicle noise in electric mode, pedestrians, people riding bicycles or other people and vehicles in the area may not be aware of the vehicle starting off or approaching them, so take extra care while driving. 24. HomeLink® and the HomeLink® house icon are registered trademarks of Gentex Corporation. 25. This floor mat was designed specifically for use in your model and model year vehicle and SHOULD NOT be used in any other vehicle. To avoid potential interference with pedal operation, each mat must be secured with its fasteners. Do not install a floor mat on top of an existing floor mat. 26. The Smart Key System may interfere with some pacemakers or cardiac defibrillators. If you have one of these medical devices, please talk to your doctor to see if you should deactivate this system. 27. Drivers are responsible for their own safe driving. Always pay attention to your surroundings and drive safely. Depending on the conditions of roads, weather and the vehicle, the system(s) may not work as intended. See *Owner's Manual* for additional limitations and details. 28. The TSS Pre-Collision System is designed to help avoid or reduce the crash speed and damage in certain frontal collisions only. It is not a substitute for safe and attentive driving. System effectiveness is dependent on road, weather and vehicle conditions. See *Owner's Manual* for additional limitations and details. 29. The Pedestrian Detection system is designed to detect a pedestrian ahead of the vehicle, determine if impact is imminent and help reduce impact speed. It is not a substitute for safe and attentive driving. System effectiveness depends on many factors, such as speed, size and position of pedestrians, and weather, light and road conditions. See *Owner's Manual* for additional limitations and details. 30. Lane Departure Alert with Steering Assist is designed to read visible lane markers under certain conditions. It provides a visual and audible alert, and slight steering force when lane departure is detected. It is not a collision-avoidance system or a substitute for safe and attentive driving. Effectiveness is dependent on road, weather and vehicle conditions. See *Owner's Manual* for additional limitations and details. 31. Automatic High Beams operate at speeds above 25 mph. Factors such as a dirty windshield, weather, lighting and terrain limit effectiveness, requiring the driver to manually operate the high beams. See *Owner's Manual* for additional limitations and details. 32. Dynamic Radar Cruise Control is designed to assist the driver and is not a substitute for safe and attentive driving practices. System effectiveness is dependent on road, weather and traffic conditions. See *Owner's Manual* for additional limitations and details. 33. Vehicle Stability Control is an electronic system designed to help the driver maintain vehicle control under adverse conditions. It is not a substitute for safe and attentive driving practices. Factors including speed, road conditions, weather and driver steering input can all affect whether VSC will be effective in preventing a loss of control. See *Owner's Manual* for additional limitations and details. 34. Brake Assist is designed to help the driver take full advantage of the benefits of ABS. It is not a substitute for safe driving practices. Braking effectiveness also depends on proper vehicle maintenance, and tire and road conditions. See *Owner's Manual* for additional limitations and details. 35. Smart Stop Technology® operates only in the event of certain contemporaneous brake and accelerator pedal applications. When engaged, the system will reduce power to help the brakes bring the vehicle to a stop. Factors including speed, road conditions and driver input can all impact stopping distance. Smart Stop Technology® is not a substitute for safe and attentive driving and does not guarantee instant stopping. See *Owner's Manual* for details. 36. Do not rely exclusively on the Rear Cross-Traffic Alert system. Always look over your shoulder and use your mirrors to confirm rear clearance. There are limitations to the function, detection and range of the system. See *Owner's Manual* for additional limitations and details. 37. Hill Start Assist Control is designed to help minimize backward rolling on steep ascents. It is not a substitute for safe driving judgment and practices. Factors including speed, grade, surface conditions and driver input can all affect whether HAC will be effective in preventing a loss of control. See *Owner's Manual* for additional limitations and details. 38. Trailer-Sway Control (TSC) is an electronic system designed to help the driver maintain vehicle control under adverse conditions. It is not a substitute for safe driving practices. Factors including speed, road conditions, weather and driver steering input can all affect whether TSC will be effective in preventing a loss of control. See *Owner's Manual* for additional limitations and details. 39. The Toyota Tire Pressure Monitor alerts the driver when tire pressure is critically low. For optimal tire wear and performance, tire pressure should be checked regularly with a gauge; do not rely solely on the monitor system. See *Owner's Manual* for details. 40. All the airbag systems are Supplemental Restraint Systems. All airbags (if installed) are designed to inflate only under certain conditions and in certain types of severe collisions. To decrease the risk of injury from an inflating airbag, always wear seatbelts and sit upright in the middle of the seat as far back as possible. Do not put objects in front of an airbag or around the seatback. Do not use a rearward-facing child seat in any front passenger seat. See *Owner's Manual* for further information/warnings. 41. Whiplash-Injury-Lessening front seats can help reduce the severity of whiplash injury in certain rear-end collisions. 42. The engine immobilizer is a state-of-the-art anti-theft system. When you insert your key into the ignition switch or bring a Smart Key fob into the vehicle, the key transmits an electronic code to the vehicle. The engine will only start if the code in the transponder chip inside the key/fob matches the code in the vehicle's immobilizer. Because the transponder chip is embedded in the key/fob, it can be costly to replace. If you lose a key or fob, your Toyota dealer can help. Alternatively, you can find a qualified independent locksmith to perform high-security key services by consulting your local Yellow Pages or by contacting www.aaia.org. 43. Extra-cost color. 44. Meets Tier 2/Bin 3 Federal emissions standard. 45. Cargo and load capacity limited by weight and distribution. 46. Before towing, confirm your vehicle and trailer are compatible, hooked up and loaded properly and that you have any necessary additional equipment. Do not exceed any Weight Ratings and follow all instructions in your *Owner's Manual*. The maximum you can tow depends on base curb weight plus the total weight of any cargo, occupants, and added vehicle equipment. "Added vehicle equipment" includes additional standard/optional equipment and accessories added by the manufacturer, dealers, and/or vehicle owners. The only way to be certain of your vehicle's exact curb weight is to weigh your vehicle without passengers or cargo. 47. 2018 EPA-estimated mileage. Actual mileage will vary. 48. "Payload capacity" is the calculation of GVWR minus curb weight and should be used for comparison purposes only. Do not exceed any Weight Ratings and follow all instructions in your *Owner's Manual*. The maximum you can haul (payload) depends on base curb weight plus the total weight of any cargo, occupants, and added vehicle equipment. "Added vehicle equipment" includes additional standard/optional equipment and accessories added by the manufacturer, dealers, and/or vehicle owners. The only way to be certain of your vehicle's exact curb weight is to weigh your vehicle without passengers or cargo. 49. Available only for vehicles equipped with factory security and factory remote keyless entry system or Smart Key System. 50. Interference from structures may affect signal strength. Requires free download of Toyota Key Finder from the iTunes® App Store to operate; also find there a list of Mac OS® devices. See *Owner's Manual* for details. 51. The Toyota Genuine Accessory Warranty will only apply when the installation is performed by a trained Toyota-approved installer. Please see dealer for details. 52. Available only for vehicles equipped with remote keyless entry system or Smart Key System. Use only if aware of circumstances surrounding the vehicle at time of start. Operate only when legal and safe to do so (e.g., car uncovered in open area with no people or pets inside or nearby). See *Owner's Manual* for details. 53. Available only with vehicles with factory remote keyless entry system.