

# 2020 RAV4



 Let's  
Go  
Places

# Seek out the adventure in every day.

Get ready to make the most out of every day in the 2020 Toyota RAV4. Whether your adventures take you downtown, uptown, around town or out of town, there's a RAV4 that's ready to redefine what you can do. Find your inspiration from four distinct versions — the premium Limited, rugged Adventure grade, exhilarating XSE Hybrid or the specially tuned TRD Off-Road. Whichever fits you best, you'll find the perfect blend of sport and utility that will empower your ambitions. So get in and go out. It's time to live each day to its fullest.



Left to right: **XSE Hybrid** shown in Silver Sky Metallic with Midnight Black Metallic roof with available Technology Package and available panoramic glass roof, **Limited AWD** shown in Ruby Flare Pearl,<sup>4</sup> and **Adventure grade** shown in Lunar Rock with Ice Edge roof<sup>4</sup> with available Technology Package. Vehicles shown using visual effects. Production models/options may vary.

See numbered footnotes in Disclosures section.

# Powered by efficiency.

---

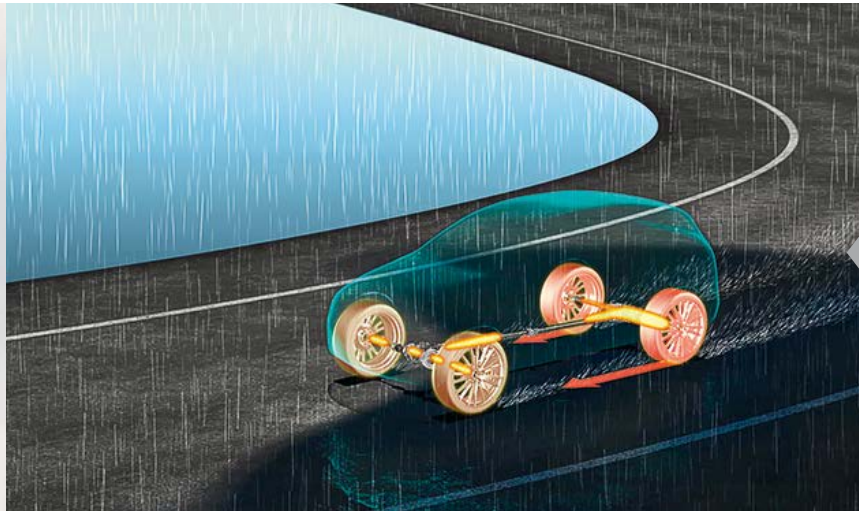
Feel the freedom of the open road or secluded trail with power and intelligent efficiency. Choose between a Dynamic Force 2.5-liter inline four-cylinder engine that is mated to a Direct Shift 8-speed Automatic Transmission or paired with Hybrid's dual electric motors and an Electronically Controlled Continuously Variable Transmission (ECVT) — both engineered to provide impressive acceleration and enhance fuel efficiency.



**Limited** shown in Magnetic Gray Metallic with available Advanced Technology Package and available panoramic glass roof, and **Adventure grade** shown in Lunar Rock with Ice Edge roof<sup>4</sup> with available Technology Package and roof rack cross bars.<sup>68</sup> Prototypes shown with options.

See numbered footnotes in Disclosures section.

PERFORMANCE



#### **DYNAMIC TORQUE VECTORING AWD WITH REAR DRIVELINE DISCONNECT**

Enjoy an upgrade in all-wheel-drive performance that is paired with impressive fuel efficiency. Available Dynamic Torque Vectoring All-Wheel Drive (TV-AWD) helps enhance responsiveness and stability by sending up to 50 percent of the power to the rear and then further distributing more power to the wheel that needs it. To boost fuel efficiency, Rear Driveline Disconnect will stop sending power to the rear when it isn't necessary.



#### **DRIVE MODES**

Three distinct drive modes let you tailor RAV4's driving dynamics to match your mood. SPORT Mode provides sharper acceleration, ECO Mode helps maximize fuel efficiency, and NORMAL Mode blends fuel economy with performance.

**+**  
**SEE THE  
POWER  
OF HYBRID**

#### **COMFORTABLE RIDE**

RAV4's Toyota New Global Architecture (TNGA) platform refines the drive wherever you take it. A longer, wider stance makes the handling more responsive, while a stronger core gives you a ride that is smooth and confident. The platform also creates a naturally spacious interior with a better view of the road.

**219**<sup>HP</sup>  
HYBRID MODELS

**203**<sup>HP</sup>  
GAS MODELS

**40** EST. MPG<sup>67</sup>  
HYBRID MODELS

**30** EST. MPG<sup>67</sup>  
GAS MODELS

**ELECTRONIC ON-DEMAND  
ALL-WHEEL DRIVE**

The power of an intelligent grip. RAV4 Hybrid's Electronic On-Demand All-Wheel Drive (AWD) provides all-weather capability and confident on-road driving dynamics. The system uses a dedicated electric drive motor to automatically supply power to the rear wheels for instant improvement in traction.

**ELECTRONICALLY CONTROLLED  
CONTINUOUSLY VARIABLE  
TRANSMISSION**

Find the sweet spot of fun. The remarkable technology of the Electronically Controlled Continuously Variable Transmission (ECVT) lets the engine stay at its most efficient rpm by using an electric motor generator to continuously change the gear ratio for smooth and powerful acceleration. Combined with RAV4 Hybrid's electric powertrain components, it creates the optimal way to get more power from less fuel.

## Go farther. Go faster. The RAV4 Hybrid.

RAV4 Hybrid is the sportiest RAV4 yet, with a sleek look to match. Its Toyota Hybrid System II engine produces an ample 219 combined net horsepower for impressive acceleration all the way to highway speeds. So get ready to make the most of every mile and every trip — you might be surprised just how far it takes you.

**SPORT-TUNED SUSPENSION**

XSE Hybrid makes no compromise when it comes to enhanced power and acceleration. When paired with the sport-tuned suspension, the tauter shock absorbers and springs give it outstanding handling you can feel and that help take on every curve you encounter, paved or not.



See numbered footnotes in Disclosures section.

HYBRID PERFORMANCE



**XSE Hybrid** shown in Silver Sky Metallic with Midnight Black Metallic roof with available Technology Package and available panoramic glass roof. Vehicle shown using visual effects. Production model/options may vary.

# More capable. More fun. More memories.

When it's time to get away, RAV4 is ready to help you take on any trip. Impressive off-road capabilities<sup>69</sup> give you the confidence to go farther, and with up to 3500 lbs. of towing ability,<sup>66</sup> you can haul more of your gear. It's time to maximize your adventures for an experience you'll never forget.



## MULTI-TERRAIN SELECT

Offering you more capability when the pavement ends, RAV4 now features standard Multi-terrain Select on All-Wheel Drive (AWD) gas models. Choose between four modes (MUD & SAND, ROCK & DIRT, SNOW and NORMAL) for enhanced traction. When activated, the system is designed to sense slippage and regulate wheelspin by automatically adjusting the engine throttle, brakes and drive-force distribution — helping to maximize driving performance on different surfaces.



## MULTI-LINK REAR SUSPENSION

Enjoy a smooth ride that delivers driving confidence. RAV4's multi-link rear suspension helps enhance handling and control by working with its natural body rigidity in order to keep traction steady.



## GROUND CLEARANCE

Don't sweat the small stuff. RAV4's ground clearance lets you easily handle off-road trails and pathways.<sup>69</sup> The ride height also gives you a more confident view of what's around you.

CAPABILITY



**TRD Off-Road** shown in Super White with available Technology Package. Vehicle shown using visual effects. Production model/options may vary. Cargo and load capacity limited by weight and distribution. Always properly secure cargo and cargo area. Do not overload your vehicle. See *Owner's Manual* for weight limits and restrictions. Vehicle shown with some accessories not available from Toyota.

# Roughing it never looked so good.

The 2020 RAV4 continues to change the crossover game. Its powerful stance and longer wheelbase help give it a look that's aggressive off the road and sophisticated on the streets. Flared fenders and sharp creases also add to its tough exterior. RAV4 is more than just looks. Because of its capabilities, it can flex some muscle whenever it's needed.



**Limited** shown in Magnetic Gray Metallic with available Advanced Technology Package and available panoramic glass roof, and **Adventure grade** shown in Lunar Rock with Ice Edge roof<sup>64</sup> with available Technology Package and roof rack cross bars.<sup>65</sup> Prototypes shown with options.

See numbered footnotes in Disclosures section.

RAV4 STYLE



#### WHEEL DESIGNS

Good-looking from the ground up. RAV4's wheels are designed to complement every model's personality and style. From XLE's 17-in. 5-spoke silver alloy wheels to Limited's available 19-in. multi-spoke super chrome-finished alloy wheels, you'll look good wherever your trips take you.

#### RAV4 TRD OFF-ROAD

As unique on the road as it is off the road. TRD Off-Road features TRD suspension with enhanced rebound control and red coil springs for a smoother ride off pavement. Rugged overfenders and black accents also amp up its exterior look. Inside, the sporty look continues with TRD-stitched headrests and red stitching accents throughout.



#### TRD WHEELS AND TIRES

Developed specifically for RAV4 TRD Off-Road, the 18-in. matte-black TRD alloy wheels utilize flow-forming technology to maintain a lightweight and rigid wheel design. Then they are wrapped with Falken<sup>®70</sup> WILDPEAK A/T Trail tires to enhance your off-road ability. These all-terrain tires feature a rugged square-shoulder design to help protect against punctures and open-shoulder grooving to help shed debris, mud and snow.



See numbered footnotes in Disclosures section.

RAV4 HYBRID STYLE



## Bold style for every mile.

The bold style of the RAV4 Hybrid models delivers a look that matches the thrill of the drive. An available two-tone paint scheme gives it a look that's sophisticated off the road and polished on the streets. RAV4 XSE Hybrid's look is taken further with its exterior piano-black accents, while unique projector-beam LED headlights flank each side of the grille to help you see what's ahead.



XSE shown in Blizzard Pearl<sup>4</sup> with Midnight Black Metallic roof with available Technology Package and available panoramic glass roof. Vehicle shown using visual effects. Production model/options may vary.

See numbered footnotes in Disclosures section.

INTERIOR STYLE

## Thoughtful interior.

Ready to impress, on- or off-road. Feel an elevated level of refinement every time you enter RAV4. Premium materials, like the available SofTex®-trimmed<sup>10</sup> seats and the comfort of an available 8-way power-adjustable driver's seat with memory function, put you in the center of it all.

**Limited AWD** interior shown in Black with available Weather Package and available panoramic glass roof. Vehicle shown using visual effects. Production model/options may vary.

See numbered footnotes in Disclosures section.



**VENTILATED/HEATED FRONT SEATS AND HEATED REAR SEATS**

Make every seat more comfortable. Available ventilated and heated front seats cool or warm up on demand, while available heated rear outboard seats can help keep rear passengers warm.

Limited AWD interior shown in Black with available Weather Package and Advanced Technology Package. Vehicle shown using visual effects. Production model/options may vary.

### DIGITAL REARVIEW MIRROR

Get a clear view with the flip of a switch. RAV4 introduced Toyota's first camera-based digital rearview mirror. The available feature uses a camera mounted up high inside the rear window for a wider field of vision — letting you see more of what's behind you.



### ANDROID AUTO™<sup>24</sup>

By pairing your compatible Android™<sup>71</sup> phone to RAV4, you can access your Google Assistant™<sup>75,77</sup> get real-time traffic alerts, make and receive phone calls, listen to your favorite soundtrack or find a place to eat — all while keeping your hands on the wheel.



### APPLE CARPLAY®<sup>25</sup>

Bring along a familiar face. With RAV4's Apple CarPlay® compatibility, you can use your compatible iPhone®<sup>72</sup> with the audio multimedia system to get directions, make calls, send messages and listen to music while staying focused on your commute. Screen depiction accurate as of summer 2019.

### JBL®<sup>38</sup> AUDIO SYSTEM

Enhance the soundtrack to every adventure with RAV4's available JBL® audio system. The next-gen system uses 800 watts of total power to drive 11 JBL® speakers in nine locations, including front horn tweeters and a subwoofer.



### USB PORTS<sup>21</sup> AND Qi-COMPATIBLE WIRELESS CHARGING<sup>43</sup>

Stay connected to fun. Plug your smartphone or mobile device into one of up to five USB ports to power up. You can also place your device on the available Qi-compatible wireless smartphone charging pad found conveniently in the tray below the climate controls.



### 8-IN. PREMIUM AUDIO TOUCH-SCREEN

Centrally located on the dash to help keep your eyes on the road, RAV4's available 8-in. multimedia touch-screen gives you access to its infotainment system. Intuitive pinch-and-zoom controls let you easily navigate through a variety of functions, while the available Wi-Fi Connect<sup>31</sup> gives you a hotspot in town and helps keep you connected beyond city limits.

HYBRID CONVENIENCE



## Closer connection.

Grab hold of the thrill that only the immediate acceleration of RAV4 Hybrid can deliver. With an available 7-in. Multi-Information Display (MID) that keeps track of your power distribution, mpg and nearly every aspect of your trip, you can keep an eye on RAV4's vitals while staying focused on every turn.

XSE Hybrid interior shown in Black/Blue SofTex<sup>®10</sup> with available Weather Package and Premium Audio with Dynamic Navigation<sup>39</sup> and JBL<sup>®38</sup> Prototype shown with options.

See numbered footnotes in Disclosures section.

## HYBRID INTERIOR STYLE AND TECHNOLOGY



**XSE Hybrid** shown in Black/Blue SofTex®<sup>10</sup> with available Technology Package and panoramic glass roof. Vehicle shown using visual effects. Production model/options may vary.

## RAV4 HYBRID INTERIOR DESIGN

RAV4 XSE Hybrid displays an energetic, modern vibe with its blue accents throughout the interior — including across the dashboard and on the seats. Inside, you'll feel like anything is possible. Fold down the 60/40 fold-flat rear seats to help you make it happen.



## HYBRID DRIVE MODES

Make the most of RAV4 Hybrid's drive modes. ECO Mode increases fuel efficiency by reducing acceleration levels. EV Mode<sup>63</sup> pulls power from its battery, maximizing efficiency for short distances. SPORT Mode gives you a boost in acceleration, while TRAIL Mode applies the brakes to individual wheels for sure-footed traction. NORMAL Mode utilizes the best of both worlds to keep you going.

See numbered footnotes in Disclosures section.

CONVENIENCE



Limited AWD shown in Magnetic Gray Metallic with available Advanced Technology Package and roof rack cross bars.<sup>68</sup> Prototype shown with options. Cargo and load capacity limited by weight and distribution. Always properly secure cargo and cargo area. Do not overload your vehicle. See Owner's Manual for weight limits and restrictions. Vehicle shown with some accessories not available from Toyota.

See numbered footnotes in Disclosures section.

# Every trip begins with a welcome.

Powered to help you out. With the push of a button, the available power rear liftgate can open and close automatically. When your hands are full, the available hands-free power liftgate<sup>6</sup> senses your Smart Key<sup>16</sup> fob and opens automatically when you wave your foot under the rear bumper. Sit inside, and a convenient shelf between the upper and lower dash gives you the perfect spot to place smaller items. Getting ready for adventure is easier than ever.



## SMART KEY SYSTEM<sup>16</sup> WITH PUSH BUTTON START

No need to reach into your pocket or purse with RAV4's available Smart Key System. When RAV4 senses the Smart Key fob is near, you can lock and unlock the front doors and rear liftgate just by putting your hand on the door handle; or choose the available five-door Smart Key option to access all doors. Once inside, just press the Push Button Start and you're ready to go.



## ACCESSORY POWER OUTLET

Power your gear wherever you go. All you have to do is access the rear cargo area and plug into RAV4's standard 12V/120W outlet<sup>73</sup> to give you the charge you need to keep going. Adventure grade and TRD Off-Road up the power with an additional 120V/100W power outlet<sup>22</sup> in the rear cargo area.



## REMOTE CONNECT<sup>36</sup>

Smart technology at hand. Through touch or voice commands, the available Toyota Remote Connect feature lets you locate your vehicle, lock or unlock the doors and even start the engine — all from your Apple Watch<sup>®74</sup> or Android<sup>™71</sup> smartwatch. One-year trial included.<sup>37</sup>

HYBRID

# The best of all worlds.

One-of-a-kind style, electrifying performance, inspiring capability and intelligent efficiency. RAV4 Hybrid has everything you look for when you're running around town, and everything you need when you head out of it.



Limited AWD shown in Magnetic Gray Metallic with available Advanced Technology Package and available panoramic glass roof, and XSE Hybrid shown in Silver Sky Metallic with Midnight Black Metallic roof with available Technology Package and available panoramic glass roof. Prototypes shown with options.

RAV4 STYLE

Discover the potential in every day.



Limited AWD shown in Ruby Flare Pearl<sup>4</sup> with available panoramic glass roof, XLE shown in Super White with available Convenience Package, and Adventure grade shown in Lunar Rock with Ice Edge roof<sup>4</sup> with available Technology Package, power tilt/slide moonroof and roof rack cross bars.<sup>68</sup> Prototypes shown with options.

See numbered footnotes in Disclosures section.



# Designed for safety.

Toyota Safety Sense™ 2.0 (TSS 2.0)<sup>44</sup> is a bundle of active safety features standard on every new RAV4 at no additional cost. These innovative features were designed to help protect you and your passengers from harm.



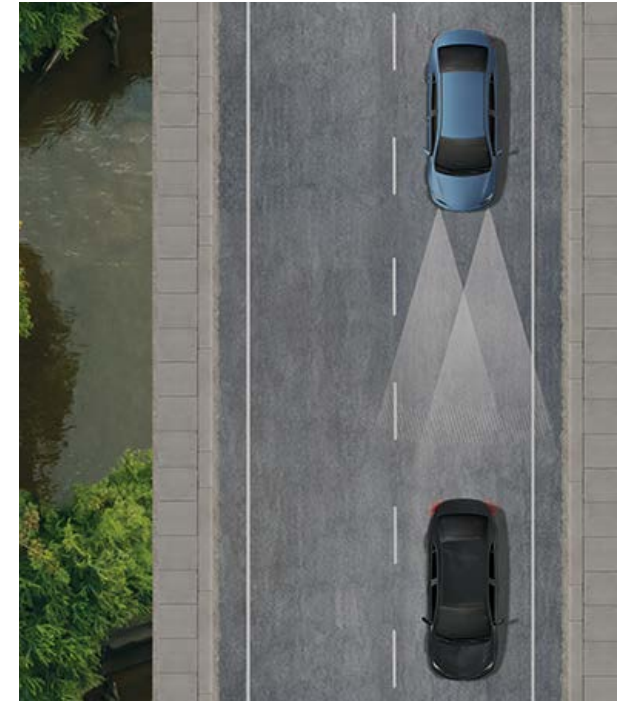
**PRE-COLLISION SYSTEM WITH PEDESTRIAN DETECTION (PCS w/PD)<sup>45</sup>**

Pre-Collision System with Pedestrian Detection (PCS w/PD) is designed to help keep the road safe by detecting a vehicle, pedestrian or bicyclist in certain situations. The latest system has enhanced low-light capabilities for pedestrian detection. By combining millimeter-wave radar with a camera capable of shape recognition, the system provides an audio/visual alert, warning you of a possible collision under certain circumstances. If you don't react, the system is designed for automatic braking support to help mitigate the potential for a collision.



**LANE DEPARTURE ALERT WITH STEERING ASSIST (LDA w/SA)<sup>46</sup>**

Using Road Edge Detection or by detecting visible lane markings, Lane Departure Alert with Steering Assist (LDA w/SA) is designed to issue both an audible alert and visual warning on the MID screen if an inadvertent lane departure is detected at speeds above 32 mph. If the system determines that the driver is not taking corrective steering action, the Steering Assist function is designed to initiate and provide gentle corrective steering to help keep the vehicle in the lane.



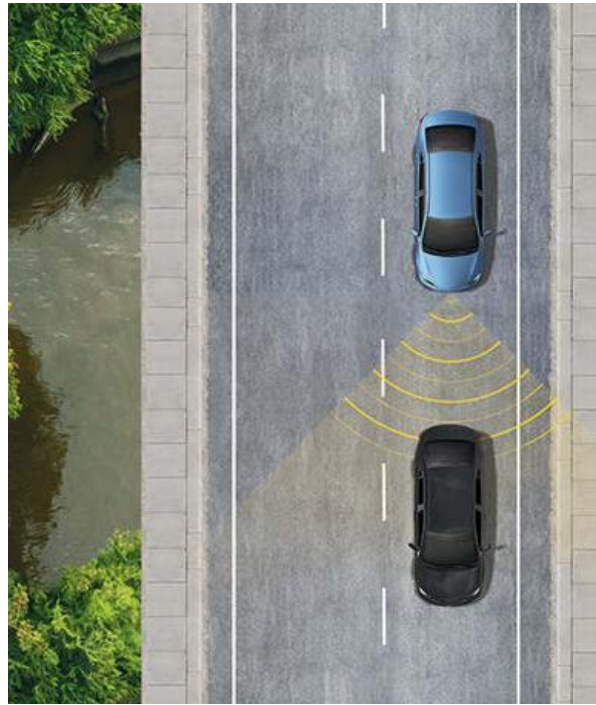
**AUTOMATIC HIGH BEAMS (AHB)<sup>2</sup>**

The Automatic High Beams (AHB) feature is a safety system designed to help you see more clearly at night — without distracting other drivers. Designed to activate at speeds above 25 mph, AHB relies on an in-vehicle camera to help detect the headlights of oncoming vehicles and taillights of preceding vehicles, then automatically toggles between high and low beams accordingly to provide the appropriate amount of light. By using high beams more frequently, the system may allow for earlier detection of pedestrians and obstacles.



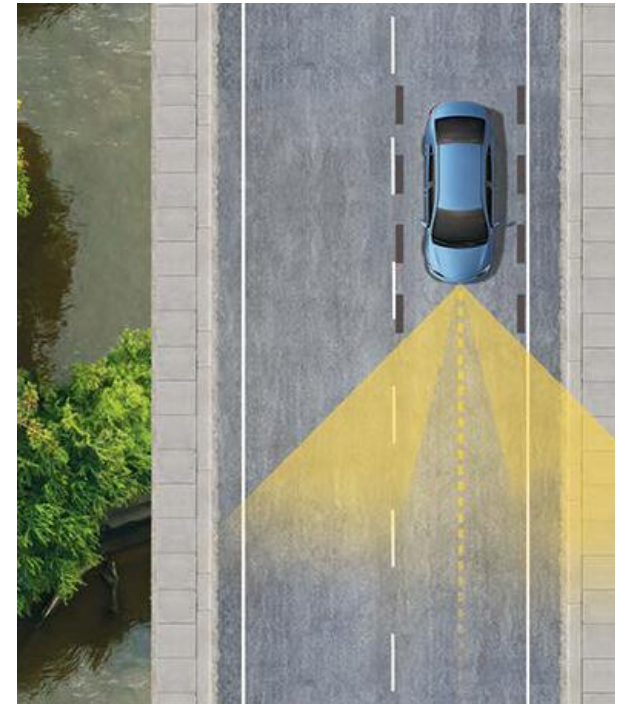
**ROAD SIGN ASSIST (RSA)<sup>48</sup>**

Road Sign Assist (RSA) is designed to help keep the road safe. Using a forward-facing intelligent camera, Road Sign Assist is designed to detect speed limit signs, stop signs, yield signs and Do Not Enter signs, and display them on the MID.



**FULL-SPEED RANGE DYNAMIC RADAR CRUISE CONTROL (DRCC)<sup>47</sup>**

Intended for highway use and similar to “constant speed” cruise control, Full-Speed Range Dynamic Radar Cruise Control (DRCC) lets you drive at a preset speed. DRCC uses vehicle-to-vehicle distance control, which is designed to adjust your speed, to help you maintain a preset distance from the vehicle ahead of you that is driving at a slower speed. DRCC uses a front-grille-mounted radar and an in-vehicle camera designed to detect vehicles and their distance. If a driver is traveling slower than you, or within your preset range, DRCC is designed to automatically slow your vehicle down without deactivating cruise control. If DRCC determines you need to slow down more, an audio and visual alert notifies you and brakes may be applied. When there’s no longer a vehicle driving slower than your preset speed in front of you, DRCC will then accelerate to the preset speed and regular cruise control will resume.



**LANE TRACING ASSIST (LTA)<sup>15</sup>**

When the Full-Speed Range Dynamic Radar Cruise Control (DRCC)<sup>47</sup> is enabled and lane markers are detectable, Lane Tracing Assist (LTA) uses the lines on the road and/or preceding vehicles to help keep the vehicle centered while also displaying the vehicle’s position on the MID screen. The system is designed to help reduce driver strain and increase convenience, and may benefit drivers most during traffic jams — but can be turned off using the MID.

SAFETY



**XLE** shown in Super White with available Convenience Package, **Adventure grade** shown in Lunar Rock with Ice Edge roof<sup>4</sup> with available Technology Package and roof rack cross bars,<sup>68</sup> and **Limited AWD** shown in Magnetic Gray Metallic with available Advanced Technology Package and available panoramic glass roof. Prototypes shown with options.

See numbered footnotes in Disclosures section.

SAFETY

### EIGHT AIRBAGS<sup>52</sup>

RAV4 comes standard with a driver and front passenger Advanced Airbag System, with driver and front passenger seat-mounted side airbags, driver knee airbag, front passenger seat-cushion airbag, in addition to front and rear side curtain airbags. Eight airbags total — all focused on your safety.

8  
airbags

## Safe for every adventure.

Be more aware of what's around you. A standard backup camera<sup>35</sup> and available Bird's Eye View Camera<sup>9</sup> help reveal more of your immediate surroundings. Available Front and Rear Parking Assist with Automated Braking (PA w/AB)<sup>56</sup> further alerts you with audible and visual warnings when it detects stationary objects or vehicles approaching from the rear. If the system determines there may be contact with a detected obstacle or vehicle, it will reduce engine power and/or apply the brakes.

### STAR SAFETY SYSTEM™

Smart tech helps keep you safe. This standard comprehensive suite of six advanced safety features is designed to help keep you out of harm's way. The system includes Enhanced Vehicle Stability Control (VSC)<sup>49</sup> Traction Control (TRAC), Anti-lock Brake System (ABS), Electronic Brake-force Distribution (EBD), Brake Assist (BA)<sup>50</sup> and Smart Stop Technology® (SST)<sup>51</sup>

### BLIND SPOT MONITOR (BSM)<sup>5</sup> WITH REAR CROSS-TRAFFIC ALERT (RCTA)<sup>55</sup>

The available Blind Spot Monitor (BSM) warns you when a vehicle in the next lane enters RAV4's blind spot on either side. When in Reverse, available Rear Cross-Traffic Alert (RCTA) helps detect vehicles approaching from either side, visibly with side mirror indicators and audibly with a warning tone.



See numbered footnotes in Disclosures section.



## LE

### Powertrain

- 2.5-Liter Dynamic Force 4-cylinder engine
- Direct Shift 8-speed Automatic Transmission
- 203 hp @ 6600 rpm, 184 lb.-ft. @ 5000 rpm
- Available All-Wheel Drive (AWD) with Multi-terrain Select
- SPORT, ECO and NORMAL drive modes
- Stop and Start Engine System (S&S)<sup>61</sup> (AWD only)

### Exterior Features

- 17-in. steel wheels with silver 6-spoke wheel covers and 225/65R17 tires
- LED Daytime Running Lights (DRL)
- Multi-LED headlights with Automatic High Beams (AHB)<sup>2</sup>
- LED taillights and stop lights
- Power outside mirrors with folding feature
- Low-profile black-painted roof rails
- Dual chrome exhaust tips

### Interior Features

- Audio — includes 7-in. touch-screen, Android Auto,<sup>TM24</sup> Apple CarPlay<sup>®25</sup> & Amazon Alexa<sup>26</sup> compatible, and SiriusXM<sup>®27</sup> with 3-month All Access trial;<sup>28</sup> Connected Services<sup>29</sup> — Safety Connect<sup>®18</sup> with 1-year trial<sup>30</sup> and Wi-Fi Connect<sup>31</sup> with up to 2 GB within 3-month trial<sup>32</sup>
- Fabric-trimmed seats; 6-way adjustable driver's seat; 4-way adjustable front passenger seat with seatback pocket
- Urethane tilt/telescopic 3-spoke steering wheel with audio, Multi-Information Display (MID), Bluetooth<sup>®12</sup> hands-free phone, and voice-command and trip controls
- Power windows with auto up/down and jam protection
- Integrated backup camera<sup>7</sup> with projected path
- Climate control system
- 4.2-in. digital Multi-Information Display (MID)
- Remote keyless entry system with lock, unlock and panic functions, and remote illuminated entry
- 60/40 split reclining fold-flat rear seat with center armrest and cup holders
- One USB media port<sup>21</sup> (in front storage tray)

### Safety/Convenience — Standard on all RAV4 models

- Toyota Safety Sense<sup>™</sup> 2.0 (TSS 2.0)<sup>44</sup> includes:
  - Pre-Collision System with Pedestrian Detection (PCS w/PD)<sup>45</sup>
  - Lane Departure Alert with Steering Assist (LDA w/SA)<sup>46</sup>
  - Automatic High Beams (AHB)<sup>2</sup>
  - Full-Speed Range Dynamic Radar Cruise Control (DRCC)<sup>47</sup>
  - Road Sign Assist (RSA)<sup>48</sup>
  - Lane Tracing Assist (LTA)<sup>15</sup>
- Anti-theft system with engine immobilizer<sup>60</sup>

### Options

- Blind Spot Monitor (BSM)<sup>5</sup> with Rear Cross-Traffic Alert (RCTA)<sup>55</sup>
- Rear cargo area cover



## LE Hybrid

Adds to or replaces features offered on LE

### Powertrain

- Hybrid 2.5-Liter Dynamic Force 4-cylinder engine
- Electronically Controlled Continuously Variable Transmission (ECVT) with sequential shift mode
- 219 combined net hp
- Electronic On-Demand All-Wheel Drive (AWD)
- Drive mode dial with SPORT, ECO and NORMAL modes
- TRAIL and EV Mode<sup>63</sup> select buttons

### Exterior Features

- 17-in. 5-spoke silver alloy wheels with 225/65R17 tires
- Active grille shutters

### Interior Features

- Dual zone automatic climate control system and rear-seat vents
- 4.2-in. digital Multi-Information Display (MID) with hybrid power meter

### Options

- Blind Spot Monitor (BSM)<sup>5</sup> with Rear Cross-Traffic Alert (RCTA)<sup>55</sup>
- Rear cargo area cover



## XLE

Adds to or replaces features offered on LE

### Powertrain

- Available All-Wheel Drive (AWD) with Multi-terrain Select
- Stop and Start Engine System (S&S)<sup>61</sup>

### Exterior Features

- 17-in. 5-spoke silver alloy wheels with 225/65R17 tires
- Integrated fog lights
- Color-keyed heated power outside mirrors with turn signal and blind spot warning indicators,<sup>5</sup> and folding feature

### Interior Features

- Fabric-trimmed seats with embossed polygon-design seat inserts; 8-way power-adjustable driver's seat with lumbar support; 4-way adjustable front passenger seat with seatback pocket
- Dual zone automatic climate control system with rear-seat vents
- Smart Key System<sup>16</sup> on front doors and liftgate with Push Button Start; remote keyless entry with lock, unlock and panic functions; and remote illuminated entry
- Blind Spot Monitor (BSM)<sup>5</sup> with Rear Cross-Traffic Alert (RCTA)<sup>55</sup>
- One USB media port and four USB charge ports<sup>21</sup>
- One 12V/120W auxiliary power outlet<sup>73</sup> in front instrument panel storage tray, and one 12V/120W auxiliary power outlet<sup>73</sup> in cargo area
- Rear cargo area cover

### Options and Packages

- XLE Weather Package includes:
  - Heated leather-trimmed steering wheel
  - Heated front seats
  - Rain-sensing variable intermittent windshield wipers with de-icer function
- XLE Convenience Package includes:
  - Power tilt/slide moonroof with one-touch open/close
  - Power liftgate with jam protection
- Audio Plus includes:
  - 8-in. touch-screen with integrated panoramic backup camera<sup>7</sup> display with dynamic gridlines
  - Anti-theft system with alarm and engine immobilizer<sup>60</sup>
  - Service Connect<sup>34</sup> with 10-year trial<sup>35</sup>
  - Remote Connect<sup>36</sup> with 1-year trial<sup>37</sup>



## XLE Hybrid

Adds to or replaces features offered on LE Hybrid

### Exterior Features

- LED Daytime Running Lights (DRL) accent lighting
- LED projector-beam headlights with chrome bezels, Automatic High Beams (AHB)<sup>2</sup> and auto on/off feature
- Integrated fog lights
- Color-keyed outside door handles with front-row touch-sensor lock/unlock feature
- Color-keyed heated power outside mirrors with turn signal and blind spot warning indicators,<sup>5</sup> and folding feature

### Interior Features

- Fabric-trimmed seats with embossed polygon-design seat inserts; 8-way power-adjustable driver's seat with lumbar support; 4-way adjustable front passenger seat with seatback pocket
- Smart Key System<sup>16</sup> on front doors and liftgate with Push Button Start; remote keyless entry with lock, unlock and panic functions; and remote illuminated entry
- One USB media port and four USB charge ports<sup>21</sup>
- One 12V/120W auxiliary power outlet<sup>73</sup> in front instrument panel storage tray, and one 12V/120W auxiliary power outlet<sup>73</sup> in cargo area

### Options and Packages

- XLE Weather Package includes:
  - Heated leather-trimmed steering wheel
  - Heated front seats
  - Rain-sensing variable intermittent windshield wipers with de-icer function
- XLE Convenience Package includes:
  - Power tilt/slide moonroof with one-touch open/close
  - Power liftgate with jam protection
- Audio Plus (requires XLE Convenience Package) includes:
  - 8-in. touch-screen with integrated panoramic backup camera<sup>7</sup> display with dynamic gridlines
  - Anti-theft system with alarm and engine immobilizer<sup>60</sup>
  - Service Connect<sup>34</sup> with 10-year trial<sup>35</sup>
  - Remote Connect<sup>36</sup> with 1-year trial<sup>37</sup>



## XLE Premium

Adds to or replaces features offered on XLE

### Exterior Features

- 19-in. multi-spoke super chrome-finished alloy wheels with 235/55R19 tires
- Power tilt/slide moonroof with one-touch open/close
- Power liftgate with jam protection

### Interior Features

- SofTex<sup>®</sup>-trimmed<sup>10</sup> seats; 8-way power-adjustable driver's seat with lumbar support; 4-way adjustable front passenger seat with seatback pocket
- Leather-trimmed tilt/telescopic 3-spoke steering wheel with silver accent and controls for audio, Multi-Information Display (MID), Bluetooth<sup>®12</sup> hands-free phone, voice-command, Dynamic Radar Cruise Control (DRCC),<sup>13</sup> Lane Departure Alert (LDA)<sup>14</sup> and Lane Tracing Assist (LTA)<sup>15</sup>
- Dual zone automatic climate control system, front center-vent flow controls, and rear-seat vents

### Options and Packages

- XLE Premium Weather Package includes:
  - Heated steering wheel
  - Heated front seats
  - 8-way power-adjustable driver's seat with memory function and lumbar support
  - Rain-sensing variable intermittent windshield wipers with de-icer function
- Audio Plus and JBL<sup>®38</sup> includes:
  - 8-in. touch-screen with integrated panoramic backup camera<sup>8</sup> display with dynamic gridlines
  - Anti-theft system with alarm and engine immobilizer<sup>60</sup>
  - 11 JBL<sup>®38</sup> speakers (in nine locations) including subwoofer and amplifier
- XLE Premium Technology Package includes:
  - Front and Rear Parking Assist with Automated Braking (PA w/AB)<sup>56</sup>
  - Digital rearview mirror with HomeLink<sup>®17</sup> universal transceiver
  - Qi-compatible wireless smartphone charging<sup>43</sup>



## Adventure

Adds to or replaces features offered on XLE Premium

### Powertrain

- Dynamic Torque Vectoring All-Wheel Drive (TV-AWD) with Rear Driveline Disconnect
- Multi-terrain Select (MUD & SAND, ROCK & DIRT, and SNOW modes)
- 3500-lb. towing capacity<sup>66</sup>

### Exterior Features

- 19-in. split 5-spoke alloy wheels with matte-black accents and 235/55R19 tires
- Unique split-bar front upper grille
- Active grille shutters
- Unique raised roof rails
- Black RAV4 and Adventure badging

### Interior Features

- Audio Plus — includes 8-in. touch-screen, Android Auto,<sup>TM24</sup> Apple CarPlay<sup>®25</sup> & Amazon Alexa<sup>26</sup> compatible, and SiriusXM<sup>®27</sup> with 3-month All Access trial,<sup>28</sup> Connected Services<sup>29</sup> — Safety Connect<sup>®18</sup> with 1-year trial,<sup>30</sup> Service Connect<sup>34</sup> with 10-year trial,<sup>35</sup> Remote Connect<sup>36</sup> with 1-year trial<sup>37</sup> and Wi-Fi Connect<sup>31</sup> with up to 2 GB within 3-month trial<sup>32</sup>
- SofTex<sup>®</sup>-trimmed<sup>10</sup> seats with orange accents and stitching, and embossed seat inserts; 8-way power-adjustable driver's seat with lumbar support; 4-way adjustable front passenger seat with seatback pocket
- Orange-accented interior, including orange stitching on dash, doors and seats
- Integrated panoramic backup camera<sup>8</sup> display with dynamic gridlines
- 7-in. digital Multi-Information Display (MID)
- One 120V/100W deck-mounted power outlet<sup>22</sup>

### Safety/Convenience

- Anti-theft system with alarm and engine immobilizer<sup>60</sup>

### Options and Packages

- Adventure Grade Weather Package includes:
  - Heated steering wheel
  - Perforated heated and ventilated front seats
  - Rain-sensing variable intermittent windshield wipers with de-icer function
- Adventure Grade Convenience Package includes:
  - Power tilt/slide moonroof with one-touch open/close
  - Power liftgate with jam protection
- Two-tone exterior color
- Premium Audio with Dynamic Navigation<sup>39</sup> and JBL<sup>®38</sup> (requires optional power tilt/slide moonroof) includes:
  - 11 JBL<sup>®38</sup> speakers (in nine locations) including subwoofer and amplifier
- Adventure Grade Technology Package (requires Premium Audio with JBL<sup>®38</sup>) includes:
  - Front and Rear Parking Assist with Automated Braking (PA w/AB)<sup>56</sup>
  - Digital rearview mirror with HomeLink<sup>®17</sup> universal transceiver
  - Qi-compatible wireless smartphone charging<sup>43</sup>



## XSE Hybrid

Adds to or replaces features offered on XLE Hybrid

### Exterior Features

- 18-in. 5-spoke black-painted sport alloy wheels with 225/60R18 tires
- Sport-tuned independent MacPherson strut front suspension with stabilizer bar and blue struts; sport-tuned multi-link rear suspension with stabilizer bar
- Black-painted heated power outside mirrors with turn signal and blind spot warning indicators,<sup>5</sup> and folding feature
- Dark gray metallic-colored hexagon-patterned front grille
- Color-keyed upper and black-painted lower front bumper, fog light trim, overfenders, mirrors, roof, rocker panels, and rear bumper with metallic gray insert
- Two-tone exterior color with Midnight Black Metallic roof

### Interior Features

- Audio Plus — includes 8-in. touch-screen, Android Auto,<sup>TM24</sup> Apple CarPlay<sup>®25</sup> & Amazon Alexa<sup>26</sup> compatible, and SiriusXM<sup>®27</sup> with 3-month All Access trial,<sup>28</sup> Connected Services<sup>29</sup> — Safety Connect<sup>®18</sup> with 1-year trial,<sup>30</sup> Service Connect<sup>34</sup> with 10-year trial,<sup>35</sup> Remote Connect<sup>36</sup> with 1-year trial<sup>37</sup> and Wi-Fi Connect<sup>31</sup> with up to 2 GB within 3-month trial<sup>32</sup>
- SofTex<sup>®</sup>-trimmed<sup>10</sup> seats with sporty blue stitching and fabric seat inserts; heated front seats; 8-way power-adjustable driver's seat with lumbar support; 4-way adjustable front passenger seat with seatback pocket
- Leather-trimmed tilt/telescopic 3-spoke steering wheel with silver accent and controls for audio, Multi-Information Display (MID), Bluetooth<sup>®12</sup> hands-free phone, voice-command, Dynamic Radar Cruise Control (DRCC),<sup>13</sup> Lane Departure Alert (LDA)<sup>14</sup> and Lane Tracing Assist (LTA)<sup>15</sup>
- Blue-accented interior, including blue stitching on dash, doors and seats; black anti-slip in-dash storage trays with blue ambient lighting
- 7-in. digital Multi-Information Display (MID) with hybrid power meter
- Digital rearview mirror with HomeLink<sup>®17</sup> universal transceiver
- Black fabric-trimmed headliner

### Options and Packages

- XSE Weather Package includes:
  - Heated steering wheel
  - Rain-sensing variable intermittent windshield wipers with de-icer function
- Premium Audio with Dynamic Navigation<sup>39</sup> and JBL<sup>®38</sup> includes:
  - 11 JBL<sup>®38</sup> speakers (in nine locations) including subwoofer and amplifier
- XSE Technology Package (requires Premium Audio with JBL<sup>®38</sup>) includes:
  - Front and Rear Parking Assist with Automated Braking (PA w/AB)<sup>56</sup>
  - Qi-compatible wireless smartphone charging<sup>43</sup>
- Panoramic glass roof with front power tilt/slide moonroof (requires XSE Technology Package)



## Limited

Adds to or replaces features offered on XLE Premium

### Powertrain

- Available Dynamic Torque Vectoring All-Wheel Drive (TV-AWD) with Rear Driveline Disconnect and Multi-terrain Select

### Exterior Features

- Dark gray metallic-colored hexagon-patterned front grille
- Chrome-accented color-keyed outside door handles with front-row touch-sensor lock/unlock feature
- Puddle lights

### Interior Features

- Premium Audio with Dynamic Navigation<sup>39</sup> and JBL<sup>®38</sup> — includes 8-in. touch-screen, 11 JBL<sup>®38</sup> speakers (in nine locations) with subwoofer and amplifier, Android Auto,<sup>TM24</sup> Apple CarPlay<sup>®25</sup> & Amazon Alexa<sup>26</sup> compatible, and SiriusXM<sup>®27</sup> with 3-month All Access trial,<sup>28</sup> Connected Services<sup>29</sup> — Safety Connect<sup>®18</sup> with 1-year trial,<sup>30</sup> Service Connect<sup>34</sup> with 10-year trial,<sup>35</sup> Remote Connect<sup>36</sup> with 1-year trial,<sup>37</sup> Wi-Fi Connect<sup>31</sup> with up to 2 GB within 3-month trial<sup>32</sup> and Destination Assist<sup>41</sup> with 1-year trial<sup>42</sup>
- SofTex<sup>®</sup>-trimmed<sup>10</sup> seats; heated front seats; 8-way power-adjustable driver's seat with two-position memory function and lumbar support; 4-way adjustable front passenger seat with seatback pocket
- Dark-brown-accented interior, including dark-brown stitching on dash, doors and seats; and dark-brown cup holder trim and anti-slip in-dash storage trays with blue ambient lighting
- 7-in. digital Multi-Information Display (MID)
- Digital rearview mirror with HomeLink<sup>®17</sup> universal transceiver
- Front and Rear Parking Assist with Automated Braking (PA w/AB)<sup>56</sup>

### Options and Packages

- Limited Grade Weather Package includes:
  - Heated steering wheel
  - Perforated heated and ventilated front seats
  - Rear outboard passenger heated seating with perforated inserts
  - Rain-sensing variable intermittent windshield wipers with de-icer function
- Limited Grade Advanced Technology Package includes:
  - Smart Key System<sup>16</sup> on all doors and liftgate
  - Hands-free power liftgate<sup>6</sup> with jam protection
  - Bird's Eye View Camera<sup>9</sup> with Perimeter Scan, overhead 360-degree view in low-speed Drive and Reverse, and curb view
  - Qi-compatible wireless smartphone charging<sup>43</sup>
- Panoramic glass roof with front power tilt/slide moonroof (requires Limited Grade Advanced Technology Package)



## Limited Hybrid

Adds to or replaces features offered on Limited

### Powertrain

- Hybrid 2.5-Liter Dynamic Force 4-cylinder engine
- Electronically Controlled Continuously Variable Transmission (ECVT) with sequential shift mode
- 219 combined net hp
- Electronic On-Demand All-Wheel Drive (AWD)
- Drive mode dial with SPORT, ECO and NORMAL modes
- TRAIL and EV Mode<sup>20</sup> select buttons

### Exterior Features

- 18-in. 5-spoke super chrome-finished sport alloy wheels with 225/60R18 tires
- LED Daytime Running Lights (DRL) accent lighting
- LED projector-beam headlights with chrome bezels, Automatic High Beams (AHB)<sup>2</sup> and auto on/off feature

### Interior Features

- 7-in. digital Multi-Information Display (MID) with hybrid power meter

### Options and Packages

- Limited Grade Weather Package includes:
  - Heated steering wheel
  - Perforated heated and ventilated front seats
  - Rear outboard passenger heated seating with perforated inserts
  - Rain-sensing variable intermittent windshield wipers with de-icer function
- Limited Grade Advanced Technology Package includes:
  - Smart Key System<sup>16</sup> on all doors and liftgate
  - Hands-free power liftgate<sup>6</sup> with jam protection
  - Bird's Eye View Camera<sup>9</sup> with Perimeter Scan, overhead 360-degree view in low-speed Drive and Reverse, and curb view
  - Qi-compatible wireless smartphone charging<sup>43</sup>
- Adaptive Front Headlight System<sup>3</sup> — LED projector-beam headlights with chrome bezels, automatic level and pan controls, Automatic High Beams (AHB)<sup>2</sup> and auto on/off feature (requires Limited Grade Advanced Technology Package)
- Panoramic glass roof with front power tilt/slide moonroof (requires Limited Grade Advanced Technology Package)



# TRD Off-Road

Adds to or replaces features offered on Adventure

## Exterior Features

- 18-in. 6-spoke matte-black TRD flow-formed alloy wheels with 225/60R18 100H tires
- Falken® WILDPEAK all-terrain tires
- LED Daytime Running Lights (DRL)
- Integrated LED fog lights
- Unique color-keyed upper and black lower front bumper, larger black overfenders and black rear bumper with magnetic gray insert
- TRD-tuned independent MacPherson strut front suspension with stabilizer bar; multi-link rear suspension with stabilizer bar
- Power tilt/slide moonroof with one-touch open/close
- Power liftgate with jam protection
- Black RAV4 and TRD Off-Road badging
- Red-painted coil springs

## Interior Features

- SofTex®-trimmed<sup>10</sup> front seats with red accents and stitching, embossed seat inserts and TRD stitching in headrest; 8-way power-adjustable driver's seat with lumbar support; 4-way adjustable front passenger seat with seatback pocket
- Red-accented interior, including red stitching on dash, doors and seat, and red cup holder trim
- TRD all-weather floor mats and cargo liner<sup>64</sup>

## Options and Packages

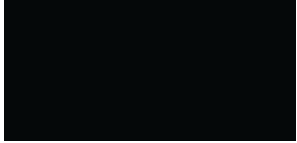
- TRD Off-Road Weather Package includes:
  - Heated steering wheel
  - Perforated heated and ventilated front seats
  - Rain-sensing variable intermittent windshield wipers with de-icer function
- Two-tone exterior color
- Premium Audio with Dynamic Navigation<sup>39</sup> and JBL<sup>®38</sup> includes:
  - 11 JBL<sup>®38</sup> speakers (in nine locations) including subwoofer and amplifier
- TRD Off-Road Technology Package (requires Premium Audio with JBL<sup>®38</sup>) includes:
  - Bird's Eye View Camera<sup>9</sup> with Perimeter Scan, overhead 360-degree view in low-speed Drive and Reverse, and curb view
  - Front and Rear Parking Assist with Automated Braking (PA w/AB)<sup>56</sup>
  - Digital rearview mirror with HomeLink<sup>®17</sup> universal transceiver
  - Qi-compatible wireless smartphone charging<sup>43</sup>



TRD Off-Road shown in Magnetic Gray Metallic with Ice Edge roof.<sup>1</sup> Vehicle shown using visual effects. Production model/options may vary.

See numbered footnotes in Disclosures section. For full product details, please visit [toyota.com/rav4](https://toyota.com/rav4).

## Color



Midnight Black Metallic



Blueprint



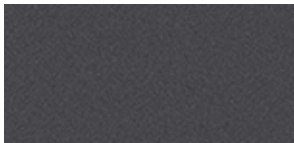
Blue Flame



Lunar Rock



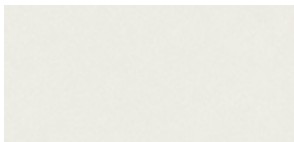
Ruby Flare Pearl<sup>4</sup>



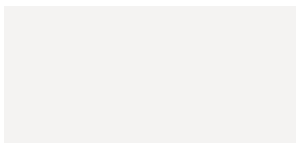
Magnetic Gray Metallic



Silver Sky Metallic

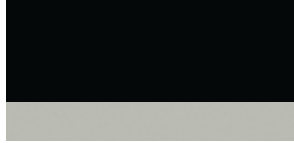


Blizzard Pearl<sup>4</sup>



Super White

## Two-Tone



Midnight Black Metallic/  
Ice Edge roof<sup>4</sup>



Blueprint/Midnight Black  
Metallic roof



Blue Flame/Ice Edge roof<sup>4</sup>



Magnetic Gray Metallic/  
Midnight Black Metallic roof



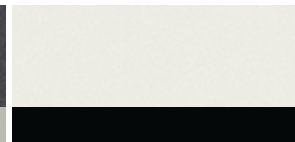
Lunar Rock/Ice Edge roof<sup>4</sup>



Silver Sky Metallic/Midnight  
Black Metallic roof

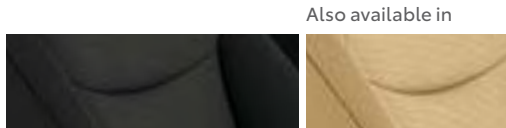


Magnetic Gray Metallic/  
Ice Edge roof<sup>4</sup>



Blizzard Pearl/Midnight Black  
Metallic roof<sup>4</sup>

# Trim



Also available in

LE fabric shown in Black

Nutmeg

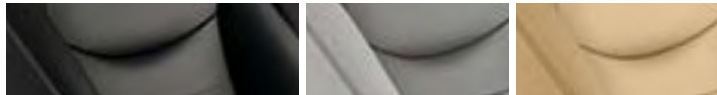


Also available in

XLE fabric shown in Black

Light Gray

Nutmeg

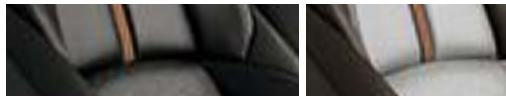


Also available in

XLE Premium SofTex<sup>®10</sup> shown in Black

SofTex<sup>®10</sup> Light Gray

SofTex<sup>®10</sup> Nutmeg



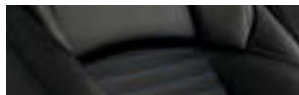
Also available in

Adventure grade SofTex<sup>®10</sup> shown in Black

SofTex<sup>®10</sup> Mocha



TRD Off-Road SofTex<sup>®10</sup> shown in Black



XSE Hybrid SofTex<sup>®10</sup> shown in Black/Blue



Also available in

Limited SofTex<sup>®10</sup> shown in Black

SofTex<sup>®10</sup> Light Gray

SofTex<sup>®10</sup> Nutmeg

# Wheels



LE 17-in. steel wheel with silver 6-spoke wheel cover



XLE/LE Hybrid/XLE Hybrid 17-in. 5-spoke silver alloy wheel



Adventure grade 19-in. split 5-spoke alloy wheel



TRD Off-Road 18-in. 6-spoke matte-black TRD flow-formed alloy wheel



XSE Hybrid 18-in. 5-spoke black-painted sport alloy wheel



Limited/XLE Premium 19-in. multi-spoke super chrome-finished alloy wheel



Limited Hybrid 18-in. 5-spoke super chrome-finished sport alloy wheel

## ACCESSORIES

A wide range of Genuine Toyota Accessories is available to help make driving your RAV4 even more fun. Now your RAV4 can reflect your personal style. There's something for everyone. Some accessories may not be available in all regions of the country. For a complete list of accessories, go to [toyota.com/rav4](https://toyota.com/rav4).

Adventure roof rack cross bars<sup>68</sup>

Alloy wheel locks

All-weather floor liners<sup>11</sup>

Black alloy wheel locks (TRD Off-Road only)

Blackout emblem overlays

Body side moldings

Cargo liner<sup>64</sup>

Cargo tote<sup>64</sup>

Carpet cargo mat<sup>64</sup>

Carpet floor mats<sup>64</sup>

Coin holder/ashtray cup

Door edge guards

Doorsill protectors

Emergency assistance kit

First aid kit

Frameless HomeLink<sup>®17</sup> mirror

High-performance Black LED fog lights

Mudguards

Paint protection film<sup>74</sup>

Rear bumper appliqué (XSE Hybrid only)

Roof rack cross bars<sup>68</sup>

Running boards

Spider cargo net<sup>64</sup>

Tow hitch receiver<sup>66</sup>

Towing wire harness<sup>66</sup>

Trailer ball<sup>66</sup>

Universal tablet holder<sup>75</sup>



Body side moldings



All-weather floor liners<sup>11</sup>



Cargo liner<sup>64</sup>



Doorsill protectors



Roof rack cross bars<sup>68</sup>



Frameless HomeLink<sup>®17</sup> mirror



Mudguards



Running boards

FEATURES<sup>1</sup>

EXTERIOR	LE	LE HYBRID	XLE	XLE HYBRID	XLE PREMIUM	ADVENTURE	TRD OFF-ROAD	XSE HYBRID	LIMITED	LIMITED HYBRID
17-in. steel wheels with silver 6-spoke wheel covers and 225/65R17 tires	S	—	—	—	—	—	—	—	—	—
17-in. 5-spoke silver alloy wheels with 225/65R17 tires	—	S	S	S	—	—	—	—	—	—
18-in. 5-spoke black-painted sport alloy wheels with 225/60R18 tires	—	—	—	—	—	—	—	S	—	—
18-in. 5-spoke super chrome-finished sport alloy wheels with 225/60R18 tires	—	—	—	—	—	—	—	—	—	S
18-in. 6-spoke matte-black TRD flow-formed alloy wheels with black lug nuts with 225/60R18 100H tires	—	—	—	—	—	—	S	—	—	—
19-in. multi-spoke super chrome-finished alloy wheels with 235/55R19 tires	—	—	—	—	S	—	—	—	S	—
19-in. split 5-spoke alloy wheels with matte-black accents and 235/55R19 tires	—	—	—	—	—	S	—	—	—	—
Multi-LED headlights with black bezels and Automatic High Beams (AHB) <sup>2</sup>	S	S	—	—	—	—	—	—	—	—
Multi-LED headlights with chrome bezels, Automatic High Beams (AHB) <sup>2</sup> and auto on/off feature	—	—	S	—	S	S	S	—	S	—
LED projector-beam headlights with chrome bezels, Automatic High Beams (AHB) <sup>2</sup> and auto on/off feature	—	—	—	S	—	—	—	S	—	S
Adaptive Front Headlight System (AFS) <sup>3</sup> — LED projector-beam headlights with chrome bezels, automatic level and pan controls, Automatic High Beams (AHB) <sup>2</sup> and auto on/off feature	—	—	—	—	—	—	—	—	—	O
LED Daytime Running Lights (DRL)	S	S	S	—	S	S	S	—	S	—
LED Daytime Running Lights (DRL) with accent lighting	—	—	—	S	—	—	—	S	—	S
Integrated fog lights	—	—	S	S	S	S	—	—	S	S
Integrated LED fog lights with black trim	—	—	—	—	—	—	S	—	—	—
Integrated fog lights with black trim	—	—	—	—	—	—	—	S	—	—
LED taillights and stop lights	S	S	S	S	S	S	S	S	S	S
Black hexagon-patterned bar front grille	S	S	S	S	S	—	—	—	—	—
Unique split-bar front upper grille	—	—	—	—	—	S	S	—	—	—
Dark gray metallic-colored hexagon-patterned bar front grille	—	—	—	—	—	—	—	S	S	S
Color-keyed upper front bumper and black lower front bumper, overfenders and rear bumper	S	S	S	S	S	—	—	—	—	—
Unique color-keyed upper and black lower front bumper, larger black overfenders, and black rear bumper with silver insert	—	—	—	—	—	S	—	—	—	—
Unique color-keyed upper and black lower front bumper, larger black overfenders, and black rear bumper with magnetic gray insert	—	—	—	—	—	—	S	—	—	—
Color-keyed upper bumper, and black-painted lower front bumper, fog light trim, overfenders, mirrors, roof, rocker panels and rear bumper with metallic gray insert	—	—	—	—	—	—	—	S	—	—
Color-keyed upper bumper, and black lower front bumper, black overfenders, and rear bumper with metallic gray insert	—	—	—	—	—	—	—	—	S	S
Two-tone exterior color	—	—	—	—	—	O <sup>4</sup>	O <sup>4</sup>	S	—	—
Black RAV4 and Adventure badging	—	—	—	—	—	S	—	—	—	—
Black RAV4 and TRD Off-Road badging	—	—	—	—	—	—	S	—	—	—
Power outside mirrors with folding feature	S	S	—	—	—	—	—	—	—	—
Color-keyed heated power outside mirrors with turn signal and blind spot warning indicators, <sup>5</sup> and folding feature	O	O	S	S	S	S	—	—	S	S
Puddle lights	—	—	—	—	—	—	—	—	S	S
Black-painted heated power outside mirrors with turn signal and blind spot warning indicators, <sup>5</sup> and folding feature	—	—	—	—	—	O	S	S	—	—
Color-keyed outside door handles	S	S	—	—	—	—	—	—	—	—
Color-keyed outside door handles with front-row touch-sensor lock/unlock feature	—	—	S	S	S	S	S	S	—	—
Chrome-accented color-keyed outside door handles with front-row touch-sensor lock/unlock feature	—	—	—	—	—	—	—	—	S	S
Chrome-accented color-keyed outside door handles with touch-sensor lock/unlock feature on all doors and liftgate	—	—	—	—	—	—	—	—	P	P
Power tilt/slide moonroof with one-touch open/close	—	—	P	P	S	O	S	S	S	S
Panoramic glass roof with front power tilt/slide moonroof	—	—	—	—	—	—	—	O	O	O
Low-profile black-painted roof rails	S	S	S	S	S	—	—	S	S	S
Unique Black raised roof rails	—	—	—	—	—	S	S	—	—	—

See numbered footnotes in Disclosures section.

S = Standard O = Optional — = Not available P = Feature is available as part of an option package.

FEATURES<sup>1</sup> (continued)

**EXTERIOR (continued)**

	LE	LE HYBRID	XLE	XLE HYBRID	XLE PREMIUM	ADVENTURE	TRD OFF-ROAD	XSE HYBRID	LIMITED	LIMITED HYBRID
Height-adjustable power liftgate with jam protection	—	—	P	P	S	P	S	S	S	S
Height-adjustable, foot-activated power liftgate with jam protection <sup>6</sup>	—	—	—	—	—	—	—	—	P	P
Aerodynamic underbody panels with vortex generators, front and rear wheel spats, and integrated rear spoiler	S	S	S	S	S	S	S	S	S	S
Active grille shutters	—	S	—	S	—	S	S	S	S	S
Dual chrome exhaust tips	S	S	S	S	S	S	S	S	S	S
Privacy glass on all rear-side, quarter and liftgate windows	S	S	S	S	S	S	S	S	S	S
Intermittent windshield wipers	S	S	—	—	—	—	—	—	—	—
Variable intermittent windshield wipers	—	—	S	S	S	S	S	S	S	S
Rain-sensing variable intermittent windshield wipers with de-icer function	—	—	P	P	P	P	P	P	P	P
Intermittent rear window wiper	S	S	S	S	S	S	S	S	S	S
Color-keyed roof-mounted shark-fin antenna	S	S	S	S	S	S	S	S	S	S

See numbered footnotes in Disclosures section.

S = Standard O = Optional — = Not available P = Feature is available as part of an option package.

FEATURES<sup>1</sup> (continued)

INTERIOR	LE	LE HYBRID	XLE	XLE HYBRID	XLE PREMIUM	ADVENTURE	TRD OFF-ROAD	XSE HYBRID	LIMITED	LIMITED HYBRID
Climate control system with dust and pollen filter	S	—	—	—	—	—	—	—	—	—
Dual zone automatic climate control system with dust and pollen filter and rear-seat vents	—	S	S	S	—	—	—	—	—	—
Dual zone automatic climate control system with dust and pollen filter, front center-vent flow controls and rear-seat vents	—	—	—	—	S	S	S	S	S	S
Integrated backup camera <sup>7</sup> with projected path	S	S	S	S	S	—	—	—	—	—
Integrated panoramic backup camera <sup>8</sup> with dynamic gridlines	—	—	P	P	P	S	S	S	S	S
Bird's Eye View Camera <sup>9</sup> — includes Perimeter Scan, overhead 360-degree view in low-speed Drive and Reverse, and curb view	—	—	—	—	—	—	P	—	P	P
Analog speedometer, tachometer, coolant temperature and fuel gauges; 4.2-in. digital Multi-Information Display (MID) with customizable settings, odometer, tripmeters, clock and outside temperature; rear-passenger seatbelt indicators, fuel economy information, trip timer, shift-position and scheduled maintenance indicators, and warning messages	S	—	S	—	S	—	—	—	—	—
Digital speedometer and instrumentation with analog tachometer, coolant temperature and fuel gauges; 7-in. digital Multi-Information Display (MID) with customizable settings, odometer, tripmeters, clock and outside temperature; rear-passenger seatbelt indicators, fuel economy information, trip timer, shift-position and scheduled maintenance indicators, and warning messages	—	—	—	—	—	S	S	—	S	—
Analog speedometer, hybrid power meter, coolant temperature, and fuel gauges; 4.2-in. digital Multi-Information Display (MID) with instrumentation and customizable settings, odometer, tripmeters, clock and outside temperature; rear-passenger seatbelt indicators, hybrid energy monitor, fuel economy information, trip timer, shift-position and scheduled maintenance indicators, and warning messages	—	S	—	S	—	—	—	—	—	—
Digital speedometer and instrumentation with analog hybrid power meter, coolant temperature, and fuel gauges; 7-in. digital Multi-Information Display (MID) with customizable settings, odometer, tripmeters, clock and outside temperature; rear-passenger seatbelt indicators, hybrid energy monitor, fuel economy information, trip timer, shift-position and scheduled maintenance indicators, and warning messages	—	—	—	—	—	—	—	S	—	S
Five-passenger seating with fabric-trimmed seating surfaces	S	S	S	S	—	—	—	—	—	—
Five-passenger seating with SofTex <sup>®</sup> -trimmed <sup>10</sup> seating surfaces	—	—	—	—	S	S	S	—	S	S
Five-passenger seating with SofTex <sup>®</sup> -trimmed <sup>10</sup> seating surfaces and fabric seat inserts	—	—	—	—	—	—	—	S	—	—
Fabric-trimmed seats; 6-way adjustable front driver's seat; 4-way adjustable front passenger seat with seatback pocket	S	S	—	—	—	—	—	—	—	—
Fabric-trimmed seats with embossed polygon-design seat inserts; 8-way power-adjustable front driver's seat with lumbar support; 4-way adjustable front passenger seat with seatback pocket	—	—	S	S	—	—	—	—	—	—
SofTex <sup>®</sup> -trimmed <sup>10</sup> seats; 8-way power-adjustable front driver's seat with lumbar support; 4-way adjustable front passenger seat with seatback pocket	—	—	—	—	S	—	—	—	—	—
SofTex <sup>®</sup> -trimmed <sup>10</sup> seats with orange accents and stitching, and embossed seat inserts; 8-way power-adjustable front driver's seat with lumbar support; 4-way adjustable front passenger seat with seatback pocket	—	—	—	—	—	S	—	—	—	—
SofTex <sup>®</sup> -trimmed <sup>10</sup> seats with red stitching, embossed seat inserts and TRD stitching in front headrests; 8-way power-adjustable front driver's seat with lumbar support; 4-way adjustable front passenger seat with seatback pocket	—	—	—	—	—	—	S	—	—	—
SofTex <sup>®</sup> -trimmed <sup>10</sup> seats with sporty blue stitching and fabric seat inserts; heated front seats; 8-way power-adjustable front driver's seat with lumbar support; 4-way adjustable front passenger seat with seatback pocket	—	—	—	—	—	—	—	S	—	—
SofTex <sup>®</sup> -trimmed <sup>10</sup> seats; heated front seats; 8-way power-adjustable driver's seat with two-position memory function and lumbar support; 4-way adjustable front passenger seat with seatback pocket	—	—	—	—	P	—	—	—	S	S
60/40 split reclining fold-flat rear seat with center armrest and cup holders	S	S	S	S	S	S	S	S	S	S
Heated front seats	—	—	P	P	P	—	—	S	S	S
Heated and ventilated perforated front seats	—	—	—	—	—	P	P	—	P	P
Rear passenger heated and perforated outboard seats	—	—	—	—	—	—	—	—	P	P
Black carpet flooring with driver-side footrest	S	S	S	S	S	S	S	S	S	S
TRD all weather floor mats <sup>11</sup> and cargo liner <sup>64</sup>	—	—	—	—	—	—	S	—	—	—
Urethane tilt/telescopic three-spoke steering wheel with controls for audio, Multi-Information Display (MID), Bluetooth <sup>®12</sup> hands-free phone, voice-command, Dynamic Radar Cruise Control (DRCC) <sup>13</sup> Lane Departure Alert (LDA) <sup>14</sup> and Lane Tracing Assist (LTA) <sup>15</sup>	S	S	S	S	—	—	—	—	—	—
Leather-trimmed tilt/telescopic three-spoke steering wheel with silver accent and controls for audio, Multi-Information Display (MID), Bluetooth <sup>®12</sup> hands-free phone, voice-command, Dynamic Radar Cruise Control (DRCC) <sup>13</sup> Lane Departure Alert (LDA) <sup>14</sup> and Lane Tracing Assist (LTA) <sup>15</sup>	—	—	—	—	S	S	S	S	S	S
Heated leather-trimmed three-spoke steering wheel	—	—	P	P	P	P	P	P	P	P
Turn signal stalk with headlight controls and one-touch three-blink lane-change turn signals	S	S	S	S	S	S	S	S	S	S
Wiper control stalk with front and rear window wiper controls	S	S	S	S	S	S	S	S	S	S
Shift lever with sequential mode	S	S	S	S	—	—	—	—	—	—
Leather-trimmed shift lever with sequential mode	—	—	—	—	S	S	S	S	S	S
Soft-touch dash and armrests, with stitched dash accents	S	S	S	S	—	—	—	—	—	—
Soft-touch dash and armrests, with stitched dash and center console accents, and anti-slip interior door grip	—	—	—	—	S	—	—	—	—	—
Soft-touch dash, door and armrests with stitched dash, door and center console accents, and anti-slip interior door grip	—	—	—	—	—	S	S	S	S	S

See numbered footnotes in Disclosures section.

S = Standard O = Optional — = Not available P = Feature is available as part of an option package.

FEATURES<sup>1</sup> (continued)

**INTERIOR (continued)**

	LE	LE HYBRID	XLE	XLE HYBRID	XLE PREMIUM	ADVENTURE	TRD OFF-ROAD	XSE HYBRID	LIMITED	LIMITED HYBRID
Black in-dash storage trays	S	S	S	S	—	—	S	—	—	—
Black anti-slip in-dash storage trays	—	—	—	—	S	—	S	—	—	—
Orange-accented interior, including orange stitching on dash, doors and seat; and orange cup holder trim and anti-slip in-dash storage trays	—	—	—	—	—	S	—	—	—	—
Red-accented interior, including red stitching on dash, doors and seat; and red cup holder trim and black anti-slip in-dash storage trays	—	—	—	—	—	—	S	—	—	—
Blue-accented interior, including blue stitching on dash, doors and seat; and black anti-slip in-dash storage trays with blue ambient lighting	—	—	—	—	—	—	—	S	—	—
Dark-brown accented interior, including dark-brown dash, doors and seat stitching; and dark-brown cup holder trim and anti-slip in-dash storage trays with blue ambient lighting	—	—	—	—	—	—	—	—	S	S
Ash gray fabric-trimmed headliner	S	S	S	S	S	S	S	—	S	S
Black fabric-trimmed headliner	—	—	—	—	—	—	—	S	—	—
Black interior door handles	S	S	—	—	—	—	—	—	—	—
Silver interior door handles	—	—	S	S	S	S	S	S	S	S
Remote keyless entry system with lock, unlock and panic functions, and remote illuminated entry	S	S	—	—	—	—	—	—	—	—
Smart Key System <sup>16</sup> on front doors and liftgate with Push Button Start; remote keyless entry with lock, unlock and panic functions; and remote illuminated entry	—	—	S	S	—	S	—	—	—	—
Smart Key System <sup>16</sup> on front doors and liftgate with Push Button Start; remote keyless entry with lock, unlock, panic and power liftgate with jam protection functions; and remote illuminated entry	—	—	P	P	S	P	S	S	S	S
Smart Key System <sup>16</sup> on all doors and liftgate with Push Button Start; remote keyless entry with lock, unlock and panic functions, hands-free power liftgate <sup>6</sup> with jam protection; and remote illuminated entry	—	—	—	—	—	—	—	—	P	P
Power windows with auto up/down and jam protection in all positions	S	S	S	S	S	S	S	S	S	S
Rear liftgate window defogger	S	S	S	S	S	S	S	S	S	S
Power door locks with shift-linked automatic lock/unlock feature	S	S	S	S	S	S	S	S	S	S
Day/night rearview mirror	S	S	S	S	S	S	S	—	—	—
Digital rearview mirror with HomeLink <sup>®17</sup> universal transceiver	—	—	—	—	P	P	P	S	S	S
Overhead console with maplights, sunglasses storage and Safety Connect <sup>®18</sup> button	S	S	S	S	—	S	—	—	—	—
Overhead console with maplights, sunglasses storage, Safety Connect <sup>®18</sup> button, and power tilt/slide moonroof controls	—	—	P	P	S	P	S	S	S	S
Overhead console with maplights, sunglasses storage, Safety Connect <sup>®18</sup> button, and power tilt/slide panoramic glass roof controls	—	—	—	—	—	—	—	O	O	O
Sun visors with illuminated vanity mirrors	S	S	—	—	—	—	—	—	—	—
Sun visors with sliding extensions and illuminated vanity mirrors	—	—	S	S	S	S	S	S	S	S
Center console with covered storage compartment, two cup holders, drive mode, Electric Parking Brake (EPB) <sup>19</sup> and automatic Brake Hold <sup>20</sup> controls, and front storage tray	S	S	S	S	S	—	—	S	S	S
Center console with covered storage compartment, two cup holders, drive mode, Multi-terrain Select, Electric Parking Brake (EPB) <sup>19</sup> and automatic Brake Hold <sup>20</sup> controls, and front storage tray	O	—	O	—	O	S	S	—	O	—
Passenger-side glove compartment	S	S	S	S	S	S	S	S	S	S
Height-adjustable rear cargo area deck board	S	S	S	S	S	S	S	S	S	S
Rear cargo area cover	O	O	S	S	S	S	S	S	S	S
Rear cargo area deckside-mounted storage net	—	—	—	—	—	S	S	S	S	S
One USB media port <sup>21</sup> in front storage tray	S	S	—	—	—	—	—	—	—	—
Five USB ports <sup>21</sup> — one USB media port in front storage tray, and four additional USB charge ports (two in front center console, and two rear-seat ports on the back of center console)	—	—	S	S	S	S	S	S	S	S
One 12V/120W auxiliary power outlet <sup>73</sup> in front instrument panel storage tray, and one 12V/120W auxiliary power outlet in second row	S	S	—	—	—	—	—	—	—	—
One 12V/120W auxiliary power outlet <sup>73</sup> in front instrument panel storage tray, and one 12V/120W auxiliary power outlet in cargo area	—	—	S	S	S	S	S	S	S	S
One 120V/100W deck-mounted AC power outlet <sup>22</sup>	—	—	—	—	—	S	S	—	—	—
Front reading lights, overhead dome light and rear cargo area light	S	S	S	S	S	S	S	S	S	S
Blue ambient illumination for in-dash shelves, center console cup holders and in front footwells	—	—	—	—	—	—	—	S	S	S
Front-row door panels with storage pockets and bottle holders	S	S	S	S	S	S	S	S	S	S
Eight total cup and bottle holders (four cup holders and four bottle holders)	S	S	S	S	S	S	S	S	S	S
Automatic Electric Parking Brake (EPB) <sup>19</sup> with Brake Hold <sup>20</sup> feature	S	S	S	S	S	S	S	S	S	S

See numbered footnotes in Disclosures section.

S = Standard O = Optional — = Not available P = Feature is available as part of an option package.

FEATURES<sup>1</sup> (continued)

**MULTIMEDIA**

	LE	LE HYBRID	XLE	XLE HYBRID	XLE PREMIUM	ADVENTURE	TRD OFF-ROAD	XSE HYBRID	LIMITED	LIMITED HYBRID
Audio — includes 7-in. touch-screen, AM/FM, six speakers, USB media port, <sup>21</sup> hands-free phone capability, advanced voice recognition <sup>23</sup> and music streaming <sup>12</sup> via <i>Bluetooth</i> <sup>®12</sup> wireless technology, Android Auto <sup>™24</sup> & Apple CarPlay <sup>®25</sup> & Amazon Alexa <sup>26</sup> compatible, SiriusXM <sup>®27</sup> with 3-month All Access trial. <sup>28</sup> Connected Services <sup>29</sup> — Safety Connect <sup>®18</sup> with 1-year trial, <sup>30</sup> Wi-Fi Connect <sup>31</sup> with up to 2 GB within 3-month trial. <sup>32</sup> See <a href="http://toyota.com/connected-services">toyota.com/connected-services</a> for details.	S	S	S	S	S	—	—	—	—	—
Audio Plus — includes 8-in. touch-screen, AM/FM/HD Radio <sup>™33</sup> , six speakers, USB media port, <sup>21</sup> four USB charge ports, <sup>21</sup> advanced voice recognition, <sup>23</sup> hands-free phone capability and music streaming <sup>12</sup> via <i>Bluetooth</i> <sup>®12</sup> wireless technology, Android Auto <sup>™24</sup> & Apple CarPlay <sup>®25</sup> & Amazon Alexa <sup>26</sup> compatible, SiriusXM <sup>®27</sup> with 3-month All Access trial. <sup>28</sup> Connected Services <sup>29</sup> — Safety Connect <sup>®18</sup> with 1-year trial, <sup>30</sup> Service Connect <sup>34</sup> with 10-year trial, <sup>35</sup> Remote Connect <sup>36</sup> with 1-year trial, <sup>37</sup> Wi-Fi Connect <sup>31</sup> with up to 2 GB within 3-month trial. <sup>32</sup> See <a href="http://toyota.com/connected-services">toyota.com/connected-services</a> for details.	—	—	P	P	—	S	S	S	—	—
Audio Plus with JBL <sup>®38</sup> — includes 8-in. touch-screen, AM/FM/HD Radio <sup>™33</sup> , 11 JBL <sup>®38</sup> speakers in nine locations including subwoofer and amplifier, USB media port, <sup>21</sup> four USB charge ports, <sup>21</sup> advanced voice recognition, <sup>23</sup> hands-free phone capability and music streaming <sup>12</sup> via <i>Bluetooth</i> <sup>®12</sup> wireless technology, Android Auto <sup>™24</sup> & Apple CarPlay <sup>®25</sup> & Amazon Alexa <sup>26</sup> compatible, SiriusXM <sup>®27</sup> with 3-month All Access trial. <sup>28</sup> Connected Services <sup>29</sup> — Safety Connect <sup>®18</sup> with 1-year trial, <sup>30</sup> Service Connect <sup>34</sup> with 10-year trial, <sup>35</sup> Remote Connect <sup>36</sup> with 1-year trial, <sup>37</sup> Wi-Fi Connect <sup>31</sup> with up to 2 GB within 3-month trial. <sup>32</sup> See <a href="http://toyota.com/connected-services">toyota.com/connected-services</a> for details.	—	—	—	—	P	—	—	—	—	—
Premium Audio with Dynamic Navigation <sup>39</sup> and JBL <sup>®38</sup> — includes 8-in. touch-screen, AM/FM/HD Radio <sup>™33</sup> , 11 JBL <sup>®38</sup> speakers in nine locations including subwoofer and amplifier, USB media port, <sup>21</sup> four USB charge ports, <sup>21</sup> Dynamic Navigation <sup>39</sup> with up to 3-year trial, <sup>40</sup> Dynamic POI Search, Dynamic Voice Recognition, hands-free phone capability and music streaming <sup>12</sup> via <i>Bluetooth</i> <sup>®12</sup> wireless technology, Android Auto <sup>™24</sup> & Apple CarPlay <sup>®25</sup> & Amazon Alexa <sup>26</sup> compatible, SiriusXM <sup>®27</sup> with 3-month All Access trial. <sup>28</sup> Connected Services <sup>29</sup> — Safety Connect <sup>®18</sup> with 1-year trial, <sup>30</sup> Service Connect <sup>34</sup> with 10-year trial, <sup>35</sup> Remote Connect <sup>36</sup> with 1-year trial, <sup>37</sup> Wi-Fi Connect <sup>31</sup> with up to 2 GB within 3-month trial, <sup>32</sup> Destination Assist <sup>41</sup> with 1-year trial. <sup>42</sup> See <a href="http://toyota.com/connected-services">toyota.com/connected-services</a> for details.	—	—	—	—	—	P	P	P	S	S
Qi-compatible wireless smartphone and device charging <sup>43</sup> with charge indicator light	—	—	—	—	P	P	P	P	P	P

**SAFETY/CONVENIENCE**

Toyota Safety Sense <sup>™</sup> 2.0 (TSS 2.0) <sup>44</sup> — Pre-Collision System with Pedestrian Detection (PCS w/PD), <sup>45</sup> Lane Departure Alert with Steering Assist (LDA w/SA), <sup>46</sup> Lane Tracing Assist (LTA), <sup>15</sup> Automatic High Beams (AHB), Full-Speed Range Dynamic Radar Cruise Control (DRCC) <sup>47</sup> and Road Sign Assist (RSA) <sup>48</sup>	S	S	S	S	S	S	S	S	S	S
<b>STAR SAFETY SYSTEM</b> Star Safety System <sup>™</sup> — includes Enhanced Vehicle Stability Control (VSC), <sup>49</sup> Traction Control (TRAC), Anti-lock Brake System (ABS), Electronic Brake-force Distribution (EBD), Brake Assist (BA) <sup>50</sup> and Smart Stop Technology <sup>®</sup> (SST) <sup>51</sup>	S	S	S	S	S	S	S	S	S	S
Eight airbags <sup>52</sup> — includes driver and front passenger Advanced Airbag System, driver and front passenger seat-mounted side airbags, driver knee airbag, front passenger seat cushion airbag, and front and rear side curtain airbags	S	S	S	S	S	S	S	S	S	S
3-point seatbelts for all seating positions; driver-side Emergency Locking Retractor (ELR) and Automatic/Emergency Locking Retractor (ALR/ELR) on all passenger seatbelts	S	S	S	S	S	S	S	S	S	S
Adjustable front seatbelt shoulder anchors	S	S	S	S	S	S	S	S	S	S
Front seatbelts with seatbelt pretensioners with force limiters	S	S	S	S	S	S	S	S	S	S
LATCH (Lower Anchors and Tethers for Children) includes lower anchors on outboard rear seats and tether anchors on all rear seats	S	S	S	S	S	S	S	S	S	S
Child door locks on rear doors	S	S	S	S	S	S	S	S	S	S
Front and rear side-impact door beams	S	S	S	S	S	S	S	S	S	S
Tire Pressure Monitor System (TPMS) <sup>53</sup>	S	S	S	S	S	S	S	S	S	S
Safety Connect <sup>®18</sup> — includes Emergency Assistance, Stolen Vehicle Locator, <sup>54</sup> Roadside Assistance and Automatic Collision Notification. Available by subscription (complimentary one-year trial subscription included <sup>50</sup> ).	S	S	S	S	S	S	S	S	S	S
Blind Spot Monitor (BSM) <sup>5</sup> with Rear Cross-Traffic Alert (RCTA) <sup>55</sup>	O	O	S	S	S	S	S	S	S	S
Front and Rear Parking Assist with Automated Braking (PA w/AB) <sup>56</sup>	—	—	—	—	P	P	P	P	S	S
Audible vehicle proximity notification system	—	S	—	S	—	—	—	S	—	S
Trailer-Sway Control (TSC) <sup>57</sup>	S	S	S	S	S	S	S	S	S	S
Hill Start Assist Control (HAC) <sup>58</sup>	S	S	S	S	S	S	S	S	S	S
Downhill Assist Control (DAC) <sup>59</sup>	—	—	—	—	—	S	S	—	O	—
Anti-theft system with engine immobilizer <sup>60</sup>	S	S	S	S	S	—	—	—	—	—
Anti-theft system with alarm and engine immobilizer <sup>60</sup>	—	—	P	P	P	S	S	S	S	S

See numbered footnotes in Disclosures section.

S = Standard O = Optional — = Not available P = Feature is available as part of an option package.

FEATURES<sup>1</sup> (continued)

PACKAGES AND OPTIONS

	LE	LE HYBRID	XLE	XLE HYBRID	XLE PREMIUM	ADVENTURE	TRD OFF-ROAD	XSE HYBRID	LIMITED	LIMITED HYBRID
<b>XLE Weather Package</b> — heated leather-trimmed steering wheel, and rain-sensing variable intermittent windshield wipers with de-icer function	—	—	P	P	—	—	—	—	—	—
<b>XLE Premium Grade Weather Package</b> — heated leather-trimmed steering wheel, heated front seats, 8-way power-adjustable driver’s seat with two-position memory function and lumbar support, and rain-sensing variable intermittent windshield wipers with de-icer function	—	—	—	—	P	—	—	—	—	—
<b>Adventure Grade Weather Package</b> — heated steering wheel, perforated heated and ventilated front seats, and rain-sensing variable intermittent windshield wipers with de-icer function	—	—	—	—	—	P	—	—	—	—
<b>TRD Off-Road Weather Package</b> — heated steering wheel, perforated heated and ventilated front seats, and rain-sensing variable intermittent windshield wipers with de-icer function	—	—	—	—	—	—	P	—	—	—
<b>XSE Weather Package</b> — heated steering wheel, and rain-sensing variable intermittent windshield wipers with de-icer function	—	—	—	—	—	—	—	P	—	—
<b>Limited Grade Weather Package</b> — heated steering wheel, perforated heated and ventilated front seats, rear outboard reclining passenger heated seating with perforated inserts, and rain-sensing variable intermittent windshield wipers with de-icer function	—	—	—	—	—	—	—	—	P	P
<b>XLE Convenience Package</b> — includes height-adjustable power liftgate with jam protection and power tilt/slide moonroof with one-touch open/close	—	—	P	P	—	—	—	—	—	—
<b>Adventure Grade Convenience Package</b> — includes height-adjustable power liftgate with jam protection and power tilt/slide moonroof with one-touch open/close	—	—	—	—	—	P	—	—	—	—
<b>Audio Plus</b> — includes 8-in. touch-screen with integrated panoramic backup camera <sup>8</sup> display with dynamic gridlines, AM/FM/HD Radio <sup>TM33</sup> , six speakers, USB media port, <sup>21</sup> four USB charge ports, <sup>21</sup> advanced voice recognition, <sup>23</sup> hands-free phone capability and music streaming <sup>12</sup> via Bluetooth <sup>®12</sup> wireless technology, Android Auto, <sup>TM24</sup> Apple CarPlay <sup>®25</sup> & Amazon Alexa <sup>26</sup> compatible, SiriusXM <sup>®27</sup> with 3-month All Access trial, <sup>28</sup> anti-theft system with alarm and engine immobilizer <sup>60</sup> Connected Services <sup>29</sup> — Safety Connect <sup>®18</sup> with 1-year trial, <sup>30</sup> Service Connect <sup>34</sup> with 10-year trial, <sup>35</sup> Remote Connect <sup>36</sup> with 1-year trial, <sup>37</sup> Wi-Fi Connect <sup>31</sup> with up to 2 GB with 3-month trial. <sup>32</sup> See <a href="http://toyota.com/connected-services">toyota.com/connected-services</a> for details.	—	—	P	P	—	S	S	S	—	—
<b>Audio Plus and JBL<sup>®38</sup></b> — includes 8-in. touch-screen with integrated panoramic backup camera <sup>8</sup> display with dynamic gridlines, AM/FM/HD Radio <sup>TM33</sup> , 11 JBL <sup>®38</sup> speakers in nine locations including subwoofer and amplifier, USB media port, <sup>21</sup> four USB charge ports, <sup>21</sup> advanced voice recognition, <sup>23</sup> hands-free phone capability and music streaming <sup>12</sup> via Bluetooth <sup>®12</sup> wireless technology, Android Auto, <sup>TM24</sup> Apple CarPlay <sup>®25</sup> & Amazon Alexa <sup>26</sup> compatible, SiriusXM <sup>®27</sup> with 3-month All Access trial, <sup>28</sup> anti-theft system with alarm and engine immobilizer. <sup>60</sup> Connected Services <sup>29</sup> — Safety Connect <sup>®18</sup> with 1-year trial, <sup>30</sup> Service Connect <sup>34</sup> with 10-year trial, <sup>35</sup> Remote Connect <sup>36</sup> with 1-year trial, <sup>37</sup> Wi-Fi Connect <sup>31</sup> with up to 2 GB with a 3-month trial. <sup>32</sup> See <a href="http://toyota.com/connected-services">toyota.com/connected-services</a> for details.	—	—	—	—	P	—	—	—	—	—
<b>Premium Audio with Dynamic Navigation<sup>39</sup> and JBL<sup>®38</sup></b> — includes 8-in. touch-screen, AM/FM/HD Radio <sup>TM33</sup> , 11 JBL <sup>®38</sup> speakers in nine locations including subwoofer and amplifier, USB media port, <sup>21</sup> 4 USB charge ports, <sup>21</sup> Dynamic Navigation <sup>39</sup> with up to 3-year trial, <sup>40</sup> Dynamic POI Search, Dynamic Voice Recognition, hands-free phone capability and music streaming <sup>12</sup> via Bluetooth <sup>®12</sup> wireless technology, Android Auto, <sup>TM24</sup> Apple CarPlay <sup>®25</sup> & Amazon Alexa <sup>26</sup> compatible, SiriusXM <sup>®27</sup> with 3-month All Access trial, <sup>28</sup> Connected Services <sup>29</sup> — Safety Connect <sup>®18</sup> with 1-year trial, <sup>30</sup> Service Connect <sup>34</sup> with 10-year trial, <sup>35</sup> Remote Connect <sup>36</sup> with 1-year trial, <sup>37</sup> Wi-Fi Connect <sup>31</sup> with up to 2 GB with 3-month trial, <sup>32</sup> Destination Assist <sup>41</sup> with 1-year trial. <sup>42</sup> See <a href="http://toyota.com/connected-services">toyota.com/connected-services</a> for details.	—	—	—	—	—	P	P	P	S	S
<b>XLE Premium Grade Technology Package (requires Audio Plus with JBL<sup>®38</sup>)</b> — includes Front and Rear Parking Assist with Automated Braking (PA w/AB) <sup>56</sup> digital rearview mirror with HomeLink <sup>®17</sup> universal transceiver and Qi-compatible wireless smartphone charging <sup>43</sup> with charge indicator light	—	—	—	—	P	—	—	—	—	—
<b>Adventure Grade Technology Package (requires Premium Audio with JBL<sup>®38</sup>)</b> — includes Front and Rear Parking Assist with Automated Braking (PA w/AB) <sup>56</sup>	—	—	—	—	—	P	—	—	—	—
<b>TRD Off-Road Technology Package (requires Premium Audio with JBL<sup>®38</sup>)</b> — includes Front and Rear Parking Assist with Automated Braking (PA w/AB) <sup>56</sup> Bird’s Eye View Camera <sup>9</sup> with Perimeter Scan, overhead 360-degree view in low-speed Drive and Reverse, and curb view; digital rearview mirror with HomeLink <sup>®17</sup> universal transceiver; and Qi-compatible wireless smartphone charging <sup>43</sup> with charge indicator light	—	—	—	—	—	—	P	—	—	—
<b>XSE Technology Package (requires Premium Audio with JBL<sup>®38</sup>)</b> — includes Front and Rear Parking Assist with Automated Braking (PA w/ AB) <sup>56</sup> and Qi-compatible wireless smartphone charging <sup>43</sup> with charge indicator light	—	—	—	—	—	—	—	P	—	—
<b>Limited Grade Advanced Technology Package</b> — includes Smart Key System <sup>16</sup> on all doors and liftgate; height-adjustable hands-free power liftgate <sup>5</sup> with jam protection; Bird’s Eye View Camera <sup>9</sup> with Perimeter Scan, overhead 360-degree view in low-speed Drive and Reverse, and curb view; and Qi-compatible wireless smartphone charging <sup>43</sup> with charge indicator light	—	—	—	—	—	—	—	—	P	P
Rear cargo area cover	O	O	S	S	S	S	S	S	S	S
Blind Spot Monitor (BSM) <sup>5</sup> with Rear Cross-Traffic Alert (RCTA) <sup>55</sup> — includes color-keyed heated power outside mirrors with turn signal and blind spot warning indicators <sup>5</sup>	O	O	S	S	S	S	S	S	S	S
Panoramic glass roof with front power tilt/slide moonroof (requires Advanced Technology Package)	—	—	—	—	—	—	—	O	O	O
Two-tone exterior color	—	—	—	—	—	O <sup>4</sup>	O <sup>4</sup>	S	—	—
Premium paint	O	O	O	O	O	O	O	O	O	O

See numbered footnotes in Disclosures section.

S = Standard O = Optional — = Not available P = Feature is available as part of an option package.

SPECIFICATIONS

**MECHANICAL/PERFORMANCE**

	LE	LE HYBRID	XLE	XLE HYBRID	XLE PREMIUM	ADVENTURE	TRD OFF-ROAD	XSE HYBRID	LIMITED	LIMITED HYBRID
<b>ENGINE</b>										
203 hp @ 6600 rpm; 184 lb.-ft. @ 5000 rpm	S	—	S	—	S	S	S	—	S	—
219 combined system net hp	—	S	—	S	—	—	—	S	—	S
2.5-Liter Dynamic Force 4-Cylinder engine with DOHC 16-Valve with D-4S Dual Injection and Dual Variable Valve Timing with intelligence (VVT-i)	S	S	S	S	S	S	S	S	S	S
Stop and Start Engine System (S&S) <sup>61</sup> (LE AWD only)	O	—	S	—	S	—	—	—	—	—
Multi-electric motor assist with power output of 118 hp, 149 lb.-ft., 650V maximum electric motor voltage and 244.8V sealed Nickel-Metal Hydride (Ni-MH) traction battery	—	S	—	S	—	—	—	S	—	S
<b>INDUCTION SYSTEM</b>										
D-4S Dual Injection (direct injection and port injection) EFI with Electronic Throttle Control System with intelligence (ETCS-i)	S	S	S	S	S	S	S	S	S	S
<b>EMISSION RATING</b>										
Ultra Low Emission Vehicle (ULEV)	S	—	S	—	S	S	S	—	S	—
Super Ultra Low Emission Vehicle (SULEV) <sup>62</sup>	—	S	—	S	—	—	—	S	—	S
<b>TRANSMISSION</b>										
Direct Shift 8-speed Electronically Controlled Automatic Transmission with intelligence (ECT-i), sequential shift mode	S	—	S	—	S	S	S	—	S	—
Electronically Controlled Continuously Variable Transmission (ECVT) with sequential shift mode	—	S	—	S	—	—	—	S	—	S
Engine oil cooler, automatic transmission fluid cooler and upgraded 150-amp alternator	—	—	—	—	—	S	S	—	—	—
Engine oil cooler, automatic transmission fluid cooler and hybrid system cooler	—	S	—	S	—	—	—	S	—	S
Automatic transmission fluid cooler	S	—	S	—	S	—	—	—	S	—
<b>DRIVETRAIN</b>										
Front-Wheel Drive (FWD)	S	—	S	—	S	—	—	—	S	—
All-Wheel Drive (AWD)	O	—	O	—	O	—	—	—	—	—
Dynamic Torque Vectoring All-Wheel Drive (TV-AWD) with Rear Driveline Disconnect	—	—	—	—	—	S	S	—	O	—
Electronic On-Demand All-Wheel Drive (AWD)	—	S	—	S	—	—	—	S	—	S
<b>BODY CONSTRUCTION</b>										
Reinforced unitized steel body	S	S	S	S	S	S	S	S	S	S
<b>SUSPENSION</b>										
Independent MacPherson strut front suspension with stabilizer bar; multi-link rear suspension with stabilizer bar	S	S	S	S	S	S	—	—	S	S
Sport-tuned independent MacPherson strut front suspension with stabilizer bar; sport-tuned multi-link rear suspension with stabilizer bar	—	—	—	—	—	—	—	S	—	—
TRD-tuned independent MacPherson strut front suspension with stabilizer bar; multi-link rear suspension with stabilizer bar (unique shocks, struts, red-painted coil springs, jounce bumpers)	—	—	—	—	—	—	S	—	—	—
<b>STEERING</b>										
Electric Power Steering (EPS); power-assisted rack-and-pinion	S	S	S	S	S	S	S	S	S	S
Steering ratio	14:3:1	14:3:1	14:3:1	14:3:1	14:4:1	14:4:1	14:4:1	14:3:1	14:4:1	14:3:1
Steering wheel turns (lock-to-lock)	2.76	2.76	2.76	2.76	2.65	2.65	2.65	2.76	2.65	2.76
<b>BRAKES</b>										
Power-assisted ventilated 12.0-in. front disc brakes; ventilated 11.1-in. rear disc brakes with Star Safety System™	S	S	S	S	S	S	S	S	S	S
Electronically Controlled Braking (ECB) system with integrated regenerative braking	—	S	—	S	—	—	—	S	—	S
<b>TURNING CIRCLE DIAMETER</b>										
Turning circle diameter, curb-to-curb (ft.)	36.1	36.1	36.1	36.1	37.4	37.4	37.4	36.1	37.4	36.1
<b>EXTERIOR DIMENSIONS (in.)</b>										
Overall height (with antenna)	67.0	67.0	67.0	67.0	67.2	68.6	68.6	67.0	67.2	67.0
Overall width	73.0	73.0	73.0	73.0	73.0	73.4	73.4	73.0	73.0	73.0
Overall length	180.9	180.9	180.9	180.9	180.9	181.5	181.5	180.9	180.9	180.9
Track (front/rear)	63.0/63.7	63.0/63.7	63.0/63.7	63.0/63.7	62.6/63.3	62.6/63.3	62.6/63.3	63.0/63.7	62.6/63.3	63.0/63.7
Wheelbase	105.9	105.9	105.9	105.9	105.9	105.9	105.9	105.9	105.9	105.9

See numbered footnotes in Disclosures section.

S = Standard O = Optional — = Not available P = Feature is available as part of an option package.

SPECIFICATIONS (continued)

**MECHANICAL/PERFORMANCE (continued)**

	LE	LE HYBRID	XLE	XLE HYBRID	XLE PREMIUM	ADVENTURE	TRD OFF-ROAD	XSE HYBRID	LIMITED	LIMITED HYBRID
<b>CAPABILITY</b>										
All-Wheel Drive Integrated Management (AIM) with Multi-Information Display (MID) monitor (AWD only)	S	S	S	S	S	S	S	S	S	S
SPORT, ECO and NORMAL drive modes	S	—	S	—	S	S	S	—	S	—
Active Cornering Assist (ACA)	S	S	S	S	S	S	S	S	S	S
Ground clearance	8.4	8.1	8.4	8.1	8.6	8.6	8.6	8.1	8.6	8.1
Multi-terrain Select: MUD & SAND, ROCK & DIRT, SNOW and NORMAL modes (All-Wheel Drive models)	S	—	S	—	S	—	—	—	—	—
Multi-terrain Select: MUD & SAND, ROCK & DIRT, SNOW and NORMAL modes, and Downhill Assist Control (DAC) <sup>59</sup> (All-Wheel Drive models)	—	—	—	—	—	S	S	—	S	—
Drive mode dial with SPORT, ECO and NORMAL Modes; with TRAIL Mode and EV Mode <sup>63</sup>	—	S	—	S	—	—	—	S	—	S
Hill Start Assist Control (HAC) <sup>58</sup>	S	S	S	S	S	S	S	S	S	S
Approach/departure angle (degrees)	19.0/21.0	19.0/21.0	19.0/21.0	19.0/21.0	19.0/21.0	19.0/21.0	19.0/21.0	19.0/21.0	19.0/21.0	19.0/21.0
<b>INTERIOR DIMENSIONS (in.)</b>										
Head room (with moonroof)	37.7/39.5	37.7/39.5	37.7/39.5	37.7/39.5	37.7/39.5	37.7/39.5	37.7/39.5	37.7/39.5	37.7/39.5	37.7/39.5
Hip room	54.3/47.7	54.3/47.7	54.3/47.7	54.3/47.7	54.3/47.7	54.3/47.7	54.3/47.7	54.3/47.7	54.3/47.7	54.3/47.7
Leg room	41.0/37.8	41.0/37.8	41.0/37.8	41.0/37.8	41.0/37.8	41.0/37.8	41.0/37.8	41.0/37.8	41.0/37.8	41.0/37.8
Shoulder room	57.8/56.4	57.8/56.4	57.8/56.4	57.8/56.4	57.8/56.4	57.8/56.4	57.8/56.4	57.8/56.4	57.8/56.4	57.8/56.4
Cargo length behind rear seat <sup>64</sup>	40.0	40.0	40.0	40.0	40.0	40.0	40.0	40.0	40.0	40.0
Cargo minimum/maximum width <sup>64</sup>	39.4/59.0	39.4/59.0	39.4/59.0	39.4/59.0	39.4/59.0	39.4/59.0	39.4/59.0	39.4/59.0	39.4/59.0	39.4/59.0
Cargo minimum/maximum height <sup>64</sup>	34.5/36.6	34.5/36.6	34.5/36.6	34.5/36.6	34.5/36.6	34.5/36.6	34.5/36.6	34.5/36.6	34.5/36.6	34.5/36.6
<b>WEIGHTS/CAPACITIES</b>										
EPA passenger volume (cu. ft.), estimated	98.9	98.9	98.9	98.9	98.9	98.9	98.9	98.9	98.9	98.9
Cargo volume <sup>64</sup> (cu. ft.) behind front/rear seat, estimated	69.8/37.6	69.8/37.6	69.8/37.5	69.8/37.5	69.8/37.5	69.8/37.6	69.8/37.6	69.8/37.5	69.8/37.5	69.8/37.5
Curb weight (lb.) (Front-Wheel Drive/All-Wheel Drive)	3370/3490	3710	3380/3490	3755	3380/3490	3615	3655	3755	3485/3620	3800
Fuel tank (gal.)	14.5	14.5	14.5	14.5	14.5	14.5	14.5	14.5	14.5	14.5
Gross Vehicle Weight Rating (GVWR) (lb.) (Front-Wheel Drive/All-Wheel Drive)	4610	4920	4610	4920	4610	4705	4705	4920	4610/4705	4920
Payload (lb.) <sup>65</sup> (Front-Wheel Drive/All-Wheel Drive)	1240/1120	1210	1205/1095	1165	1205/1095	1090	1050	1165	1125/1085	1120
Seating capacity	5	5	5	5	5	5	5	5	5	5
Towing capacity (lb.) <sup>66</sup>	1500	1750	1500	1750	1500	3500	3500	1750	1500	1750
<b>TIRES</b>										
All-Season Mud-and-Snow-rated radials	S	S	S	S	S	S	—	S	S	S
Falken <sup>®70</sup> WILDPEAK A/T Trail tires	—	—	—	—	—	—	S	—	—	—
Spare — Temporary	S	S	S	S	S	S	S	S	S	S
<b>MILEAGE ESTIMATES (mpg city/highway/combined)<sup>67</sup></b>										
Front-Wheel Drive	27/35/30	—	28/35/30	—	28/35/30	—	—	—	27/35/30	—
All-Wheel Drive	27/34/30	—	27/33/29	—	27/33/29	25/33/28	25/32/27	—	25/33/28	—
Hybrid	—	41/38/40	—	41/38/40	—	—	—	41/38/40	—	41/38/40

S = Standard O = Optional — = Not available P = Feature is available as part of an option package.

**WARRANTIES**

Every Toyota Car, Truck and SUV is built to exceptional standards. And that's not idle boasting. We back it up with these Limited Warranty Coverages:

**Basic:** 36 months/36,000 miles (all components other than normal wear and maintenance items).

**Hybrid-Related Component Coverage:** Hybrid-related components, including the battery control module, hybrid control module and inverter with converter, are covered for 8 years/100,000 miles. Refer to applicable *Warranty and Maintenance Guide* for details.

**Hybrid Battery:** HV battery is covered for 10 years or 150,000 miles, whichever comes first. Warranty coverage is subject to terms and conditions. Refer to applicable *Warranty and Maintenance Guide* for details.

**Powertrain:** 60 months/60,000 miles (engine, transmission/transaxle, drive system, seatbelts and airbags).

**Rust-Through:** 60 months/unlimited miles (corrosion perforation of sheet metal).

**Emissions:** Coverages vary under Federal and California regulations. Refer to applicable *Warranty and Maintenance Guide* for details.

**Accessories:** For Genuine Toyota Accessories purchased at the time of the new vehicle purchase, the Toyota Accessory Warranty coverage is in effect for 36 months/36,000 miles from the vehicle's in-service date, which is the same coverage as the Toyota New Vehicle Limited Warranty.

For Genuine Toyota Accessories purchased after the new vehicle purchase the coverage is 12 months, regardless of mileage, from the date the accessory was installed on the vehicle, or the remainder of any applicable new vehicle warranty, whichever provides greater coverage.

You may be eligible for transportation assistance if it's necessary that your vehicle be kept overnight for repairs covered under warranty. Please see your authorized Toyota dealership for further details.

For complete details about Toyota's warranties, please visit [www.toyota.com](http://www.toyota.com), refer to the applicable *Warranty and Maintenance Guide* or see your Toyota dealer.

See numbered footnotes in Disclosures section.

## DISCLOSURES

**1.** Toyota strives to build vehicles to match customer interest and thus they typically are built with popular options and option packages. Not all options/packages are available separately and some may not be available in all regions of the country. If you would prefer a vehicle with no or different options, contact your dealer to check for current availability or the possibility of placing a special order. Color(s) depicted may vary based on multiple factors, including ambient lighting and the format in which it is being viewed (e.g., computer, mobile device or print). **2.** Automatic High Beams operate at speeds above 25 mph. Factors such as a dirty windshield, weather, lighting and terrain limit effectiveness, requiring the driver to manually operate the high beams. See *Owner's Manual* for additional limitations and details. **3.** The Adaptive Front-Lighting System helps improve night vision. Situations such as a dirty windshield, rapidly changing light conditions or hilly terrain may limit effectiveness, requiring the driver to manually turn off the system. See *Owner's Manual* for additional limitations and details. **4.** Extra-cost color. **5.** Do not rely exclusively on the Blind Spot Monitor. Always look over your shoulder and use your turn signal. There are limitations to the function, detection and range of the monitor. See *Owner's Manual* for additional limitations and details. **6.** The hands-free sensor can be affected by water, weather, dirt and other conditions. It may not operate promptly, or may operate unintentionally, under certain conditions. See *Owner's Manual* for additional limitations and details. **7.** The backup camera does not provide a comprehensive view of the rear area of the vehicle and you should also look around the vehicle, using mirrors to confirm rearward clearance. Environmental conditions may limit effectiveness and view may become obscured. See *Owner's Manual* for additional limitations and details. **8.** The integrated panoramic backup camera does not provide a comprehensive view of the rear area of the vehicle. You should also look around outside your vehicle and use your mirrors to confirm rearward clearance. Environmental conditions may limit effectiveness and view may become obscured. See *Owner's Manual* for additional limitations and details. **9.** The Bird's Eye View Camera does not provide a comprehensive view of the area surrounding the vehicle and you should also look around the vehicle, using mirrors to confirm surrounding clearance. Environmental conditions may limit effectiveness and view may become obscured. See *Owner's Manual* for additional limitations and details. **10.** SofTex® is a registered trademark of Toyota Motor Sales, U.S.A., Inc. **11.** This floor mat/floor liner was designed specifically for use in your model and model year vehicle and SHOULD NOT be used in any other vehicle. To avoid potential interference with pedal operation, each mat/liner must be secured with its fasteners. Do not install a floor mat/floor liner on top of an existing floor mat/floor liner. **12.** The Bluetooth® word mark and logos are registered trademarks owned by Bluetooth SIG, Inc., and any use of such marks by Toyota is under license. A compatible Bluetooth®-enabled phone must first be paired. Phone performance depends on software, coverage and carrier. **13.** Dynamic Radar Cruise Control is designed to assist the driver and is not a substitute for safe and attentive driving practices. System effectiveness is dependent on many factors including road, weather and traffic conditions. DRCC not available on manual transmissions. See *Owner's Manual* for additional limitations and details. **14.** Lane Departure Alert is designed to read visible lane markers under certain conditions, and provide visual and audible alerts when lane departure is detected. It is not a collision-avoidance system or a substitute for safe and attentive driving. Effectiveness is dependent on many factors including road, weather and vehicle conditions. See *Owner's Manual* for additional limitations and details. **15.** Lane Tracing Assist (LTA) is designed to read visible lane markers and detect other vehicles under certain conditions when DRCC is engaged. When potential lane departure is detected, LTA provides a visual warning and either an audible alert or vibration in the steering wheel and can apply a slight steering force. It is not a collision-avoidance system or a substitute for safe and attentive driving. Effectiveness is dependent on many factors including road, weather and vehicle conditions. LTA not available on manual transmissions. See *Owner's Manual* for additional limitations and details. **16.** The Smart Key System may interfere with some pacemakers or cardiac defibrillators. If you have one of these medical devices, please talk to your doctor to see if you should deactivate this system. **17.** HomeLink® and the HomeLink® house icon are registered trademarks of Gentex Corporation. **18.** Toyota Safety Connect® depends on an operative telematics device, a cellular connection, navigation map data and GPS signal strength and other factors outside of Toyota's control, all of which can limit system functionality or availability, including access to response center and emergency support. Stolen vehicle police report required to use Stolen Vehicle Locator. Registration required. Service subject to change at any time without notice. Terms of Use apply. Service may vary by vehicle and region. See usage precautions and service limitations in *Owner's Manual* and at [toyota.com/connected-services/](https://toyota.com/connected-services/) for additional details. To learn about Toyota's data collection, use, sharing and retention practices, please visit <https://www.toyota.com/privacyvts/>. **19.** When the system is on, Electric Parking Brake is designed to engage the Parking Brake under limited conditions. It may not hold the vehicle under all conditions. See *Owner's Manual* for additional limitations and details. **20.** When the system is on, Brake Hold is designed to keep the brakes engaged after the driver brings the vehicle to a complete stop. It may not hold the vehicle under certain conditions and does not function when the vehicle is in Reverse. Brake Hold is not a substitute for safe and attentive driving. See *Owner's Manual* for additional limitations and details. **21.** May not be compatible with all mobile phones, MP3/WMA players and like models. **22.** Do not exceed 120V. See *Owner's Manual* for additional limitations and details. **23.** Advanced voice recognition capabilities vary by head unit. **24.** Always drive safely and obey traffic laws. Vehicle user interface is a product of Google and its terms and privacy statement apply. To use Android Auto on your car display, you'll need an Android Auto compatible vehicle or aftermarket stereo, an Android phone running Android 5.0 or higher, and the Android Auto app. Google, Android and Android Auto are trademarks of Google LLC. **25.** Always drive safely and obey traffic laws. Apps and services are subject to change at any time without notice. Data charges may apply. Apple CarPlay® functionality requires a compatible iPhone® connected with an approved data cable into the USB media port. Apple CarPlay® is a registered trademark of Apple Inc. **26.** Amazon, Alexa and all related logos are trademarks of Amazon.com, Inc. or its affiliates. Requires adequate signal strength and smartphone. See applicable application for details. Not all Amazon Alexa functionality is available for in-vehicle use and some functions depend on smart home technology. Download of the Toyota+Alexa app is required to begin in-vehicle use of Alexa. Data charges may apply. Apps, prices and services subject to change at any time without notice. To learn more, go to <https://www.toyota.com/audio-multimedia>. To learn more about Toyota's data collection, use, sharing and retention practices, please visit <https://www.toyota.com/privacyvts/>. **27.** SiriusXM® audio services require a subscription sold separately by Sirius XM Radio Inc. If you decide to continue service after your trial, the subscription plan you choose will automatically renew thereafter and you will be charged according to your chosen payment method at then-current rates. Fees and taxes apply. To cancel, you must call SiriusXM at 1-866-635-2349. See SiriusXM Customer Agreement for complete terms at [www.siriusxm.com](http://www.siriusxm.com). All fees and programming subject to change. Not all vehicles or devices are capable of receiving all services offered by SiriusXM. Current information and features may not be available in all locations, or on all receivers. ©2019 Sirius XM Radio Inc. SiriusXM and all related marks and logos are trademarks of Sirius XM Radio Inc. **28.** SiriusXM All Access trial length and service availability may vary by model, model year or trim. **29.** Connected Services depends on an operative telematics device, a cellular connection, navigation map data, GPS signal strength and other factors outside of Toyota's control, all of which can limit system functionality or availability, including access to response center and emergency support. Service may vary by vehicle and region. Terms of Use apply. Data charges may apply. Apps and services subject to change at any time without notice. See [toyota.com/connected-services/](https://toyota.com/connected-services/) for details. To learn about Toyota's data collection, use, sharing and retention, please visit <https://www.toyota.com/privacyvts/>. Stolen vehicle police report required to use Stolen Vehicle Locator. **30.** The Safety Connect® trial period is at no extra cost and begins on the original date of purchase or lease of a new vehicle. After the trial period expires, enrollment in paid subscription is required to access the service. **31.** Eligible vehicle and wireless service required. Coverage and service not available everywhere. Valid in the contiguous U.S. and Alaska. Do not drive distracted. Go to [att.com/toyota](http://att.com/toyota) for terms and conditions. Wi-Fi Connect is available on select 2019 and newer Toyota vehicles. Visit [toyota.com](http://toyota.com) for vehicle availability. Data usage and charges apply. Up to 5 devices can be supported using in-vehicle connectivity. Apps and services subject to change at any time without notice. **32.** The Wi-Fi Connect trial period is at no extra cost and begins on the date of activation. After the trial period expires, enrollment in a paid subscription is required to access the service. Terms and conditions apply. **33.** HD Radio™ Technology manufactured under license from iBiquity Digital Corporation U.S. and Foreign Patents. HD Radio™ and the HD, HD Radio, and "Arc" logos are proprietary trademarks of iBiquity Digital Corp. **34.** Information provided is based on the last time data was collected from the vehicle and may not be up to date. Service Connect depends on an operative telematics device, a cellular connection, navigation map data, GPS signal strength and other factors outside of Toyota's control, which can limit functionality or availability. Service may vary by vehicle and region. Registration required. Service subject to change at any time without notice. Terms and conditions of subscription service agreement apply. See usage precautions and service limitations in *Owner's Manual* and at [toyota.com/connected-services/](https://toyota.com/connected-services/) for additional details. To learn about Toyota's data collection, use, sharing and retention, please visit <https://www.toyota.com/privacyvts/>. **35.** The Service Connect trial period is at no extra cost and begins on the original date of purchase or lease of a new vehicle. After the respective trial period expires, enrollment in paid subscription is required to access the service. **36.** Use only if aware of circumstances surrounding vehicle and it is legal and safe to do so (e.g., do not remotely start engine if vehicle is in an enclosed space or vehicle is occupied by a child). Remote Connect depends on an operative telematics device, a cellular connection, GPS signal strength and other factors outside of Toyota's control, which can limit system functionality and availability. Service may vary by vehicle and region. Registration and app download required. Terms of Use apply. Data charges may apply. Remote start/stop not available on manual-transmission-equipped vehicles. Services subject to change at any time without notice. See usage precautions and service limitations in *Owner's Manual* and at <https://www.toyota.com/connected-services/> for additional details. To learn about Toyota's data collection, use, sharing and retention practices, please visit <https://www.toyota.com/privacyvts/>. **37.** The Remote Connect trial period is at no extra cost and begins on the original date of purchase or lease of a new vehicle. After the trial period expires, enrollment in a paid subscription is required to access the service. Terms and conditions apply. **38.** JBL® is a registered trademark of Harman International Industries, Inc. **39.** Dynamic Navigation depends on an operative telematics device, a cellular connection, navigation map data and GPS signal strength, and other factors outside of Toyota's control, which can limit system functionality or availability. Services not available in every city or roadway. Use common sense when relying on information provided. Service may vary by vehicle and region. Registration is required. Terms of Use apply. See *Owner's Manual* and <https://toyota.com/connected-services/> for additional limitations and details. To learn about Toyota's data collection, use, sharing and retention practices, please visit <https://www.toyota.com/privacyvts/>. **40.** The Dynamic Navigation three-year trial period begins on the original date of purchase or lease of a new vehicle. After the trial period expires, enrollment in paid subscription is required to access the service. **41.** Destination Assist depends on an operative telematics device, a cellular connection, navigation map data and GPS signal strength and other factors outside of Toyota's control, which can limit system ability, functionality or availability. Use common sense when relying on this information. Service may vary by vehicle and region. Registration required. Services subject to change at any time without notice. Terms of Use apply. See *Owner's Manual* and [toyota.com/connected-services/](https://toyota.com/connected-services/) for additional limitations and details. To learn about Toyota's data collection, use, sharing and retention practices, please visit <https://www.toyota.com/privacyvts/>. **42.** The Destination Assist Connect trial period is at no extra cost and begins on the original date of purchase or lease of a new vehicle. After the trial period expires, enrollment in a paid subscription is required to access the service.

## DISCLOSURES (continued)

**43.** Qi wireless charging may not be compatible with all mobile phones, MP3/WMA players and like models. When using the wireless charging system, avoid placing metal objects between the wireless charger and the mobile device when charging is active. Doing so may cause metal objects to become hot and could cause burns. **44.** Toyota Safety Sense™ effectiveness is dependent on many factors including road, weather and vehicle conditions. Drivers are responsible for their own safe driving. Always pay attention to your surroundings and drive safely. See *Owner's Manual* for additional limitations and details. **45.** The Pre-Collision System (PCS) with Pedestrian Detection (PD) is designed to determine if impact is imminent and help reduce impact speed and damage in certain frontal collisions involving a vehicle or a pedestrian. PCS w/PD is not a substitute for safe and attentive driving. System effectiveness depends on many factors, such as speed, size and position of pedestrian and weather, light and road conditions. See *Owner's Manual* for additional limitations and details. **46.** Lane Departure Alert with Steering Assist is designed to read visible lane markers under certain conditions. It provides a visual and audible alert and slight steering force when lane departure is detected. It is not a collision-avoidance system or a substitute for safe and attentive driving. Effectiveness is dependent on many factors including road, weather and vehicle conditions. See *Owner's Manual* for additional limitations and details. **47.** Full-Speed Range Dynamic Radar Cruise Control is designed to assist the driver and is not a substitute for safe and attentive driving practices. System effectiveness is dependent on road, weather and traffic conditions. See *Owner's Manual* for additional limitations and details. **48.** Do not rely exclusively on Road Sign Assist (RSA). RSA is a driver support system that utilizes the vehicle's forward-facing camera and navigation system to recognize certain road signs and provide information to the driver via the multi-information display and/or Head-Up Display. Effectiveness is dependent on road, weather, vehicle and sign conditions. Use common sense when using RSA and do not drive distracted. See *Owner's Manual* for additional limitations and details. **49.** Vehicle Stability Control is an electronic system designed to help the driver maintain vehicle control under adverse conditions. It is not a substitute for safe and attentive driving practices. Factors including speed, road conditions, weather and driver steering input can all affect whether VSC will be effective in preventing a loss of control. See *Owner's Manual* for additional limitations and details. **50.** Brake Assist is designed to help the driver take advantage of ABS and is not a substitute for safe driving practices. Braking effectiveness also depends on proper vehicle maintenance, tire and road conditions. See *Owner's Manual* for additional limitations and details. **51.** Smart Stop Technology® operates only in the event of certain contemporaneous brake and accelerator pedal applications. When engaged, the system will reduce power to help the brakes bring the vehicle to a stop. Factors including speed, road conditions and driver input can all impact stopping distance. Smart Stop Technology® is not a substitute for safe and attentive driving and does not guarantee instant stopping. See *Owner's Manual* for additional limitations and details. **52.** Airbag systems are Supplemental Restraint Systems and are designed to inflate only under certain conditions and in certain types of severe collisions. To decrease the risk of injury from an inflating airbag, always wear seatbelts and sit upright in the middle of the seat as far back as possible. Do not put objects in front of an airbag or around the seatback. Do not use a rearward-facing child seat in any front passenger seat. See *Owner's Manual* for additional limitations and details. **53.** The Tire Pressure Monitor System alerts the driver when tire pressure is critically low. For optimal tire wear and performance, tire pressure should be checked regularly with a gauge; do not rely solely on the monitor system. See *Owner's Manual* for additional limitations and details. **54.** Building and/or parking structures may limit system effectiveness. Stolen vehicle police report required to use Stolen Vehicle Locator. For additional assistance contact the Toyota Customer Experience Center at 1-800-331-4331. **55.** Do not rely exclusively on the Rear Cross-Traffic Alert system. Always look over your shoulder and use your mirrors to confirm rear clearance. There are limitations to the function, detection and range of the system. See *Owner's Manual* for additional limitations and details. **56.** At speeds of 9 mph or less, Front and Rear Parking Assist with Automated Braking (PA w/AB) is designed to assist drivers in avoiding potential collisions with nearby static objects when the vehicle is in Drive or Reverse and approaching crossing vehicles when the vehicle is in Reverse. Do not overly rely on PA w/AB. Always look around outside the vehicle and use mirrors to confirm clearance. Certain vehicle and environmental factors, including an object or vehicle's shape, size and composition, may affect the system's effectiveness. See *Owner's Manual* for additional limitations and details. **57.** Trailer-Sway Control (TSC) is an electronic system designed to help the driver maintain vehicle control under adverse conditions. It is not a substitute for safe driving practices. Factors including speed, road conditions, weather and driver steering input can all affect whether TSC will be effective in preventing a loss of control. See *Owner's Manual* for additional limitations and details. **58.** Hill Start Assist Control is designed to help minimize backward rolling on steep ascents. It is not a substitute for safe driving judgment and practices. Factors including speed, grade, surface conditions and driver input can all affect whether HAC will be effective in preventing a loss of control. See *Owner's Manual* for additional limitations and details. **59.** Downhill Assist Control is designed to help driver maintain vehicle control and speed on steep, downhill descents and is not a substitute for safe driving judgment and practices. Factors including speed, grade, surface conditions and driver input can affect the DAC's ability to prevent loss of control. See *Owner's Manual* for additional limitations and details. **60.** The engine immobilizer is a state-of-the-art anti-theft system that is initiated when you insert your key into the ignition switch or bring a Smart Key fob into the vehicle. The engine will only start if the code in the transponder chip inside the key/fob matches the code in the vehicle's immobilizer. The transponder chip is embedded in the key/fob and can be costly to replace. If you lose a key or fob, your Toyota dealer can help or go to [www.aloa.org](http://www.aloa.org) to find a qualified locksmith in your area who can perform high-security key service. **61.** Before towing, confirm Stop and Start Engine System is disengaged (V6 gas models only). **62.** Meets Tier 2/Bin 3 Federal emissions standard. **63.** CAUTION! When driving a hybrid vehicle, pay special attention to the area around the vehicle. Because there is little vehicle noise in EV Mode, pedestrians, people riding bicycles or other people and vehicles in the area may not be aware of the vehicle starting off or approaching them, so take extra care while driving. EV Mode works under certain conditions at low speeds. See *Owner's Manual* for additional limitations and details. **64.** Cargo and load capacity limited by weight and distribution. Always properly secure cargo and cargo area. **65.** Payload Capacity is the calculation of GVWR minus curb weight and should be used for comparison purposes only. The maximum amount of passenger and cargo weight your vehicle can carry is the Load Carrying Capacity indicated on the label(s) on the driver's doorjamb. **66.** Before towing, confirm your vehicle and trailer are compatible, hooked up and loaded properly and that you have any necessary additional equipment. Do not exceed any Weight Ratings and follow all instructions in your *Owner's Manual*. The maximum you can tow depends on base curb weight plus the total weight of any cargo, occupants, and added vehicle equipment. "Added vehicle equipment" includes additional standard/optional equipment and accessories added by the manufacturer, dealers, and/or vehicle owners. The only way to be certain of your vehicle's exact curb weight is to weigh your vehicle without passengers or cargo. **67.** 2020 RAV4 EPA-estimated 27 city/35 hwy/30 combined mpg for LE FWD and Limited FWD; 27 city/34 hwy/30 combined mpg for LE AWD; 28 city/35 hwy/30 combined mpg for XLE FWD and XLE Premium FWD; 27 city/33 hwy/29 combined mpg for XLE AWD and XLE Premium AWD; 25 city/33 hwy/28 combined mpg for Adventure; 25 city/32 hwy/27 combined mpg for TRD Off-Road; 25 city/33 hwy/28 combined mpg for Limited AWD; and 41 city/38 hwy/40 combined mpg for LE Hybrid, XLE Hybrid, XSE Hybrid and Limited Hybrid. Actual mileage will vary. **68.** Do not overload your vehicle. See *Owner's Manual* for weight limits and restrictions. **69.** The Toyota RAV4 is designed to meet most off-road driving requirements, but off-roading is inherently dangerous and may result in vehicle damage. Toyota encourages responsible operation to help protect you, your vehicle and the environment. Seatbelts should be worn at all times. Do not allow passengers to ride in cargo area. **70.** Falken Tires and the Falken Tires logo are registered trademarks of Sumitomo Rubber North America, Inc. **71.** Android is a trademark of Google LLC. **72.** iPhone® is a registered trademark of Apple Inc. All rights reserved. **73.** Rated for 12 volts. See *Owner's Manual* for additional limitations and details. **74.** Genuine Toyota Paint Protection Film by 3M™ is designed for specific sections of the vehicle most prone to chipping and may vary depending on vehicle model. Select applications may require an additional charge. Toyota Genuine Accessory Warranty only applies when installation is performed by a trained Toyota-approved installer. See Toyota dealer for details. **75.** The universal tablet holder is intended for passengers only. Drivers should always be sure to obey traffic regulations and maintain awareness of the road and traffic conditions at all times. Use of aftermarket accessories may pose an increased risk of injury to occupants in the event of an accident. Tablet sold separately. **76.** Google is a trademark of Google LLC. **77.** Always drive safely and obey traffic laws. Functionality depends on many factors outside of Toyota's control. Actions and services subject to change at any time without notice. To learn more, go to <https://www.toyota.com/connected-services>. To learn more about Toyota's data collection, use, sharing and retention practices, please visit <https://www.toyota.com/privacyvts/>.

Toyota strives to build vehicles to match customer interest and thus they typically are built with popular options and option packages. Not all options/packages are available separately and some may not be available in all regions of the country. See [toyota.com](http://toyota.com) for information about options/packages commonly available in your area. If you would prefer a vehicle without any or with different options, contact your dealer to check for current availability or the possibility of placing a special order. Color(s) depicted may vary based on multiple factors, including ambient lighting and the format in which it is being viewed (e.g., computer, mobile device or print).

Toyota RAV4 is designed to meet most off-road driving requirements. Abusive use may result in bodily harm or damage. Toyota encourages responsible operation to protect you, your vehicle and the environment. Seatbelts should be worn at all times. Please do not allow passengers to ride in the cargo area. Towing hitch receiver/ball mount kits are not intended to provide crash protection.

For details on vehicle specifications, standard features and available equipment in your area, contact your Toyota dealer. A vehicle with particular equipment may not be available at the dealership. Ask your Toyota dealer to help locate a specifically equipped vehicle.

All information presented herein is based on data available at the time of posting, is subject to change without notice and pertains specifically to mainland U.S.A. vehicles only. Vehicles shown may be prototypes and/or shown with options. Actual models may vary.



For Toyota Mobility program details, go to [www.toyota.com/mobility](http://www.toyota.com/mobility) or call the Toyota Customer Assistance Center at 1-800-331-4331